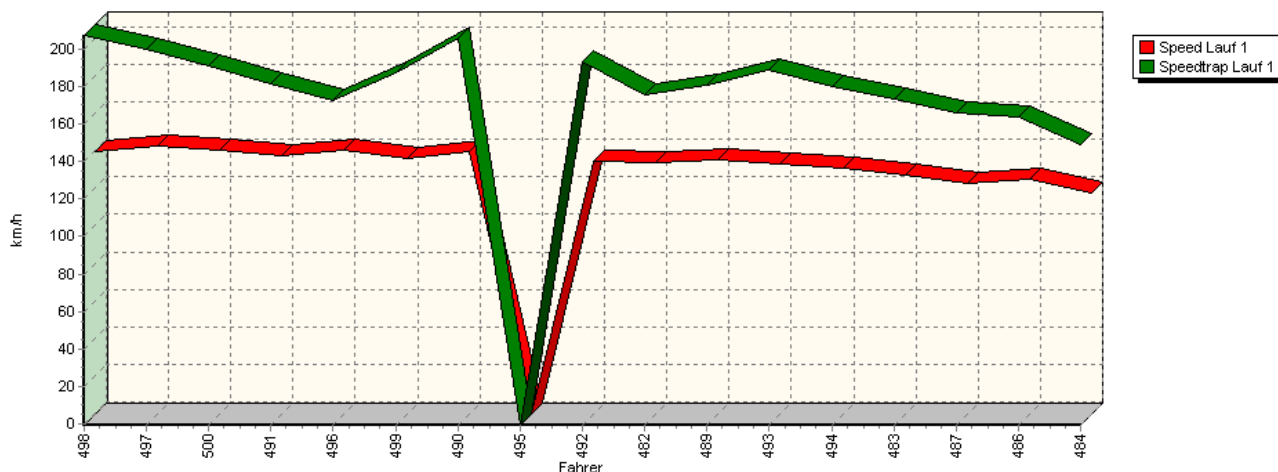
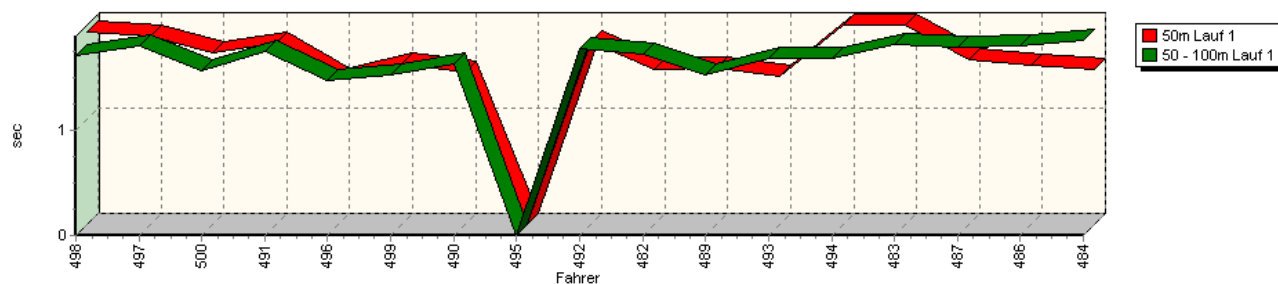


Sektorzeiten & Speeds - Gruppe E1 über 2000 ccm - Klasse 27

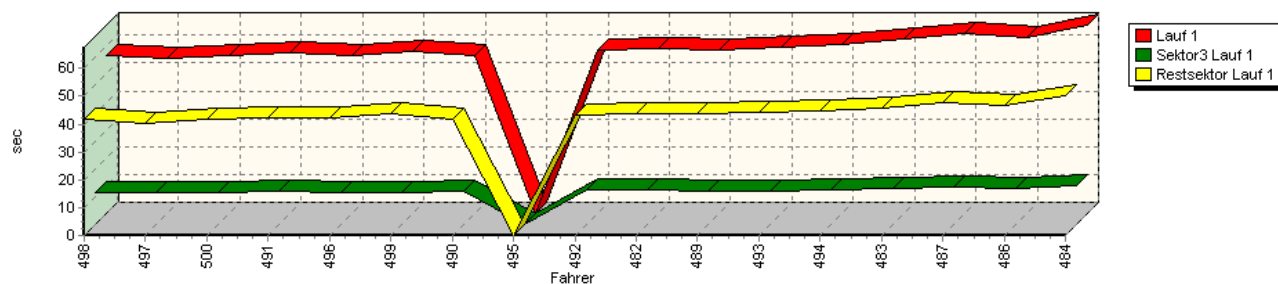
Speed-Diagramm Lauf 1



Sektor-Diagramm (Start) Lauf 1

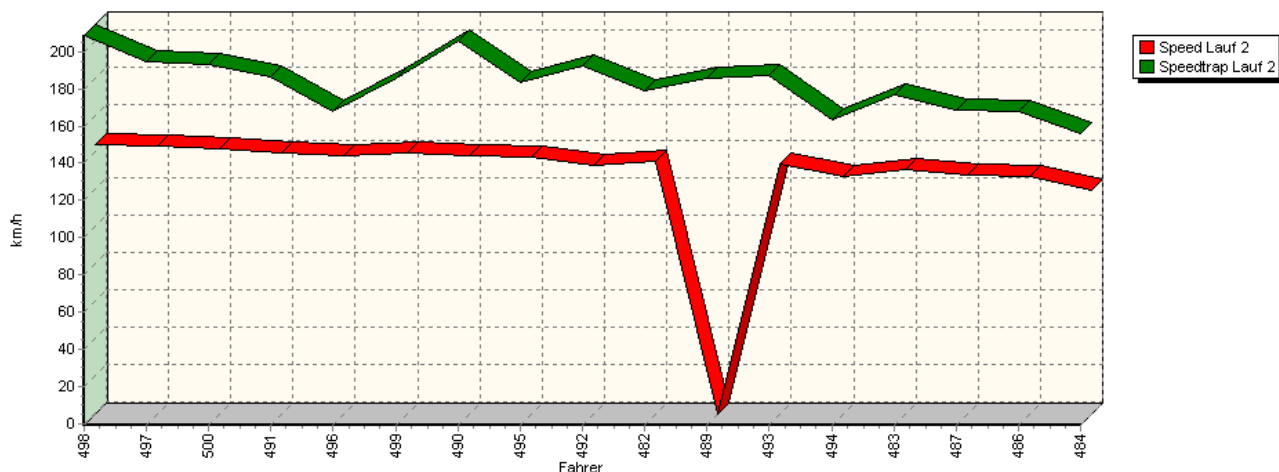


Sektor-Diagramm (Rest) Lauf 1

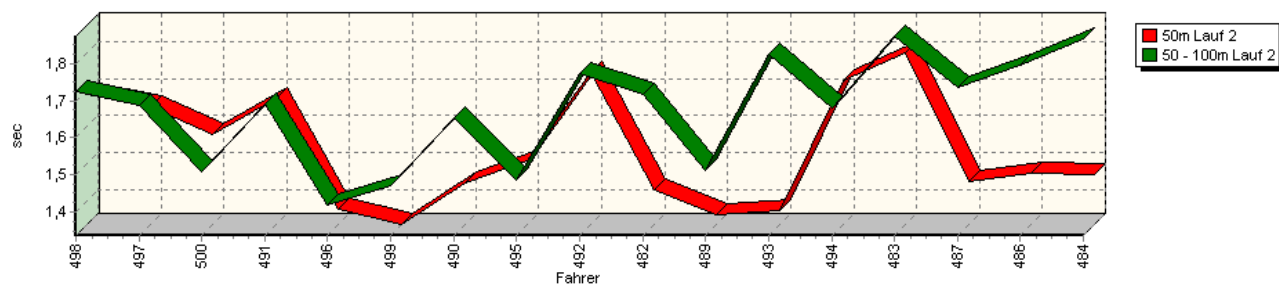


Sektorzeiten & Speeds - Gruppe E1 über 2000 ccm - Klasse 27

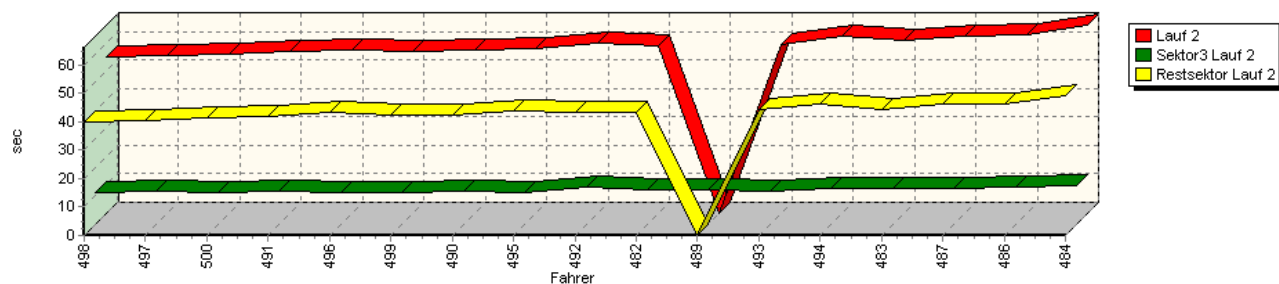
Speed-Diagramm Lauf 2



Sektor-Diagramm (Start) Lauf 2

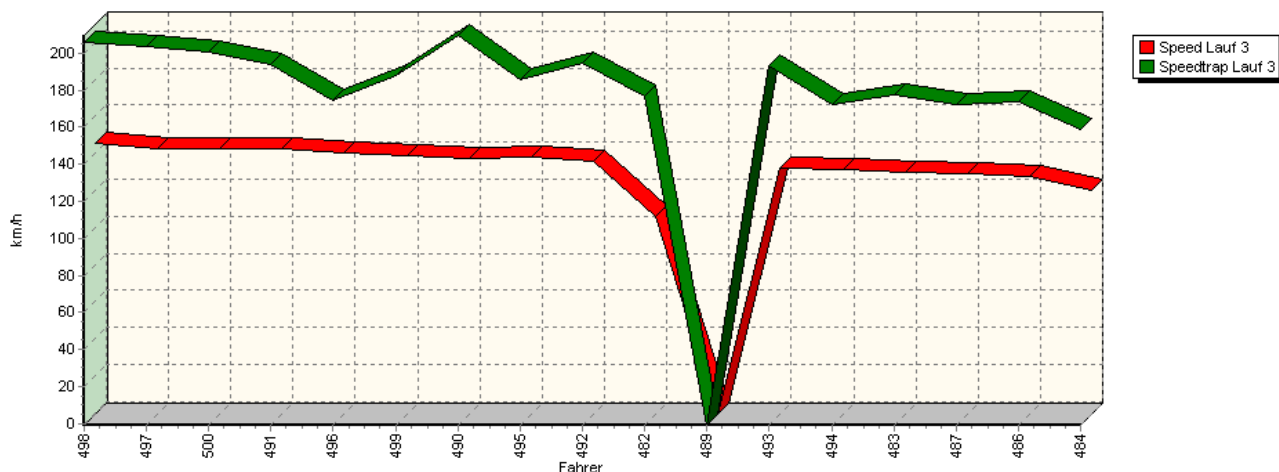


Sektor-Diagramm (Rest) Lauf 2

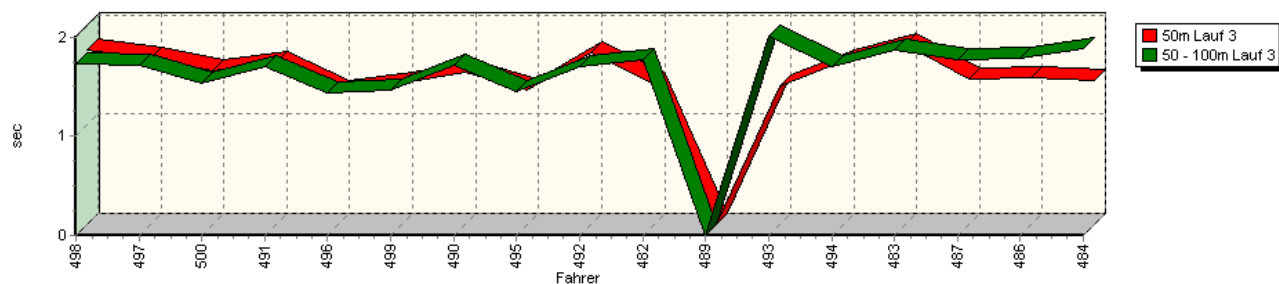


Sektorzeiten & Speeds - Gruppe E1 über 2000 ccm - Klasse 27

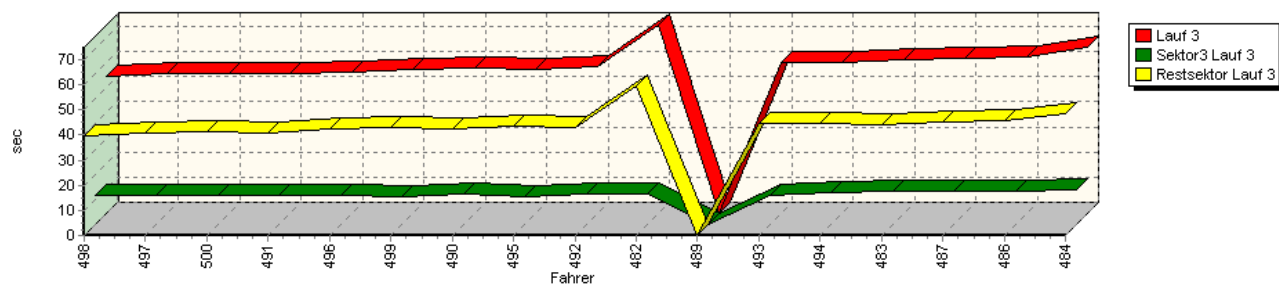
Speed-Diagramm Lauf 3



Sektor-Diagramm (Start) Lauf 3



Sektor-Diagramm (Rest) Lauf 3



Rg.	Nr.	Sektor 1 (15m)	Sektor 2 (15-50m)	Sektor 3	Speed Trap	Sektor 4	Laufzeit	Speed (Lauf)	
1	498	MEISEL Reto		Mercedes Benz 190 RM 1 V8					
		Lauf 1:	00:01.834	00:01.716	00:11.434	207,62 km/h	00:41.769	00:56.753	139,55 km/h
		Lauf 2:	00:01.686	00:01.725	00:11.399	208,77 km/h	00:40.119	00:54.929	144,19 km/h
		Lauf 3:	00:01.758	00:01.726	00:11.296	206,09 km/h	00:39.824	00:54.604	145,04 km/h

Sektorzeiten & Speeds - Gruppe E1 über 2000 ccm - Klasse 27

Rg.	Nr.		Sektor 1 (15m)	Sektor 2 (15-50m)	Sektor 3	Speed Trap	Sektor 4	Laufzeit	Speed (Lauf)
2	497	BRENNER Norbert		Opel Astra V8 DTM					
		Lauf 1:	00:01.794	00:01.811	00:11.657	200,18 km/h	00:40.263	00:55.525	142,64 km/h
		Lauf 2:	00:01.653	00:01.686	00:11.463	194,72 km/h	00:40.571	00:55.373	143,03 km/h
		Lauf 3:	00:01.680	00:01.716	00:11.718	203,51 km/h	00:40.613	00:55.727	142,12 km/h
3	500	MICHL Dan		Opel Michl 2,8					
		Lauf 1:	00:01.645	00:01.573	00:11.491	191,13 km/h	00:41.729	00:56.438	140,33 km/h
		Lauf 2:	00:01.580	00:01.507	00:11.383	193,13 km/h	00:41.255	00:55.725	142,13 km/h
		Lauf 3:	00:01.551	00:01.532	00:11.369	200,97 km/h	00:41.130	00:55.582	142,49 km/h
4	491	BÜELER Toni		Opel Astra V8 DTM					
		Lauf 1:	00:01.737	00:01.761	00:11.816	181,50 km/h	00:42.264	00:57.578	137,55 km/h
		Lauf 2:	00:01.675	00:01.690	00:11.653	186,47 km/h	00:41.814	00:56.832	139,36 km/h
		Lauf 3:	00:01.634	00:01.698	00:11.563	194,27 km/h	00:40.725	00:55.620	142,39 km/h
5	496	SCHORI Hans		Mitsubishi EVO RS					
		Lauf 1:	00:01.389	00:01.477	00:11.253	172,91 km/h	00:42.438	00:56.557	140,03 km/h
		Lauf 2:	00:01.377	00:01.420	00:11.250	167,55 km/h	00:43.349	00:57.396	137,99 km/h
		Lauf 3:	00:01.346	00:01.440	00:11.301	174,37 km/h	00:42.274	00:56.361	140,52 km/h
6	499	HANDA Norbert		Lancia Delta Integrale Evo 3					
		Lauf 1:	00:01.530	00:01.529	00:11.572	187,38 km/h	00:43.754	00:58.385	135,65 km/h
		Lauf 2:	00:01.336	00:01.470	00:11.368	185,58 km/h	00:42.557	00:56.731	139,60 km/h
		Lauf 3:	00:01.419	00:01.460	00:11.250	187,65 km/h	00:42.951	00:57.080	138,75 km/h
7	490	STOLZ Herbert		Porsche 935 DP II					
		Lauf 1:	00:01.453	00:01.633	00:11.765	205,79 km/h	00:42.007	00:56.858	139,30 km/h
		Lauf 2:	00:01.447	00:01.654	00:11.716	205,87 km/h	00:42.417	00:57.234	138,38 km/h
		Lauf 3:	00:01.534	00:01.719	00:11.977	209,62 km/h	00:42.637	00:57.867	136,87 km/h
8	495	PAILER Felix		Lancia Delta Integrale					
		Lauf 1:	*	*	*	* km/h	*	*	* km/h
		Lauf 2:	00:01.507	00:01.485	00:11.064	183,15 km/h	00:43.723	00:57.779	137,07 km/h
		Lauf 3:	00:01.357	00:01.454	00:11.225	185,77 km/h	00:43.437	00:57.473	137,80 km/h
9	492	HOFFMANN Klaus		Opel Astra V8 DTM					
		Lauf 1:	00:01.741	00:01.790	00:12.236	193,38 km/h	00:43.125	00:58.892	134,48 km/h
		Lauf 2:	00:01.748	00:01.774	00:13.014	192,37 km/h	00:43.165	00:59.701	132,66 km/h
		Lauf 3:	00:01.731	00:01.707	00:12.166	194,79 km/h	00:42.671	00:58.275	135,91 km/h
10	482	HULMANN Valere		Mazda 323					
		Lauf 1:	00:01.484	00:01.738	00:12.216	176,01 km/h	00:43.793	00:59.231	133,71 km/h
		Lauf 2:	00:01.429	00:01.718	00:12.080	179,35 km/h	00:43.454	00:58.681	134,97 km/h
		Lauf 3:	00:01.415	00:01.774	00:12.279	176,95 km/h	00:59.400	01:14.868 +15s	105,79 km/h
11	489	CHLUPACEK Gernot		Ford Escort Cosworth WRC					
		Lauf 1:	00:01.499	00:01.537	00:11.977	180,83 km/h	00:43.680	00:58.693	134,94 km/h
		Lauf 2:	00:01.363	00:01.512	00:11.975	186,06 km/h	*	A	* km/h
		Lauf 3:	*	*	*	* km/h	*	*	* km/h
12	493	WERNER Anton		Audi A4					
		Lauf 1:	00:01.418	00:01.694	00:12.065	189,48 km/h	00:44.282	00:59.459	133,20 km/h
		Lauf 2:	00:01.373	00:01.827	00:11.842	187,25 km/h	00:44.076	00:59.118	133,97 km/h
		Lauf 3:	00:01.394	00:02.009	00:11.798	193,42 km/h	00:44.747	00:59.948	132,12 km/h
13	494	PERINI Franco		Alfa Romeo 155 V6ti					
		Lauf 1:	00:01.904	00:01.687	00:12.445	180,02 km/h	00:44.585	01:00.621	130,65 km/h
		Lauf 2:	00:01.724	00:01.680	00:12.816	163,52 km/h	00:46.182	01:02.402	126,92 km/h
		Lauf 3:	00:01.652	00:01.701	00:12.535	171,95 km/h	00:44.329	01:00.217	131,52 km/h

Sektorzeiten & Speeds - Gruppe E1 über 2000 ccm - Klasse 27

Rg.	Nr.		Sektor 1 (15m)	Sektor 2 (15-50m)	Sektor 3	Speed Trap	Sektor 4	Laufzeit	Speed (Lauf)
14	483	NEFF Frederic		BMW E30					
		Lauf 1:	00:01.904	00:01.820	00:13.051	173,86 km/h	00:45.702	01:02.477	126,77 km/h
		Lauf 2:	00:01.799	00:01.874	00:12.834	176,86 km/h	00:44.219	01:00.726	130,42 km/h
		Lauf 3:	00:01.810	00:01.871	00:13.019	177,36 km/h	00:44.279	01:00.979	129,88 km/h
15	487	BRACHT Jürgen		Lancia Delta Integrale					
		Lauf 1:	00:01.577	00:01.800	00:13.450	166,44 km/h	00:47.851	01:04.678	122,45 km/h
		Lauf 2:	00:01.450	00:01.736	00:12.889	168,84 km/h	00:45.991	01:02.066	127,61 km/h
		Lauf 3:	00:01.470	00:01.767	00:13.010	172,60 km/h	00:45.333	01:01.580	128,61 km/h
16	486	REINDL Philipp		Lancia Delta Integrale 16V					
		Lauf 1:	00:01.524	00:01.808	00:13.008	164,34 km/h	00:46.964	01:03.304	125,11 km/h
		Lauf 2:	00:01.474	00:01.794	00:12.948	167,97 km/h	00:46.344	01:02.560	126,60 km/h
		Lauf 3:	00:01.485	00:01.780	00:12.990	173,69 km/h	00:45.965	01:02.220	127,29 km/h
17	484	CRETEGNY Jean-Romain		Ford Sierra Cosworth					
		Lauf 1:	00:01.477	00:01.865	00:13.992	149,49 km/h	00:50.283	01:07.617	117,13 km/h
		Lauf 2:	00:01.470	00:01.865	00:13.848	155,86 km/h	00:48.966	01:06.149 +15s	119,73 km/h
		Lauf 3:	00:01.452	00:01.882	00:14.008	158,72 km/h	00:48.540	01:05.882	120,21 km/h