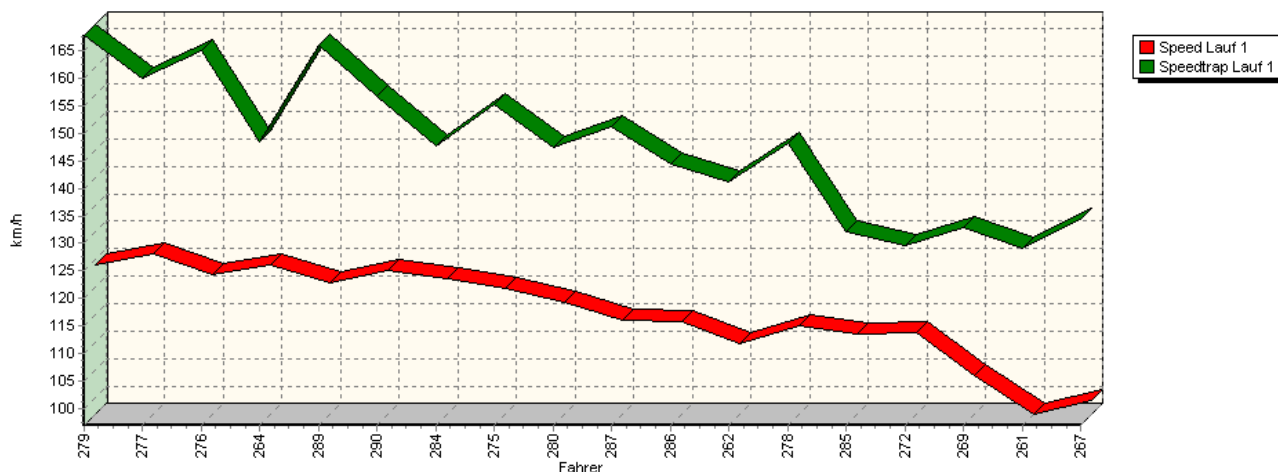
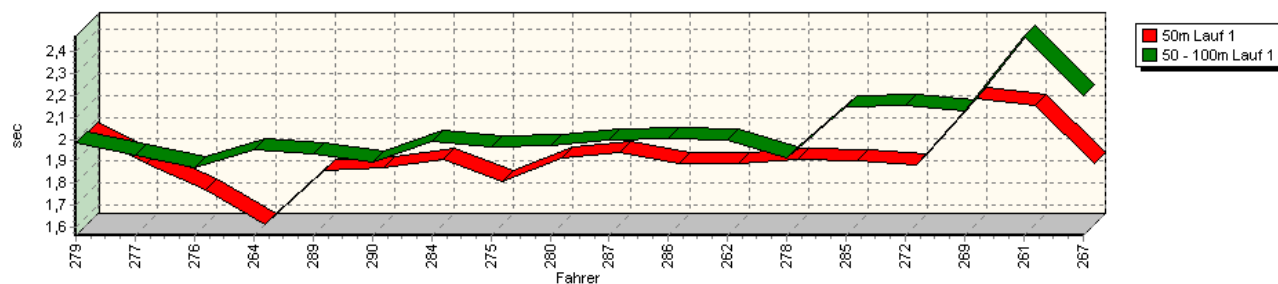


## Sektorzeiten & Speeds - Gruppe H (DMSB, OSK) bis 1300 ccm - Klasse 19

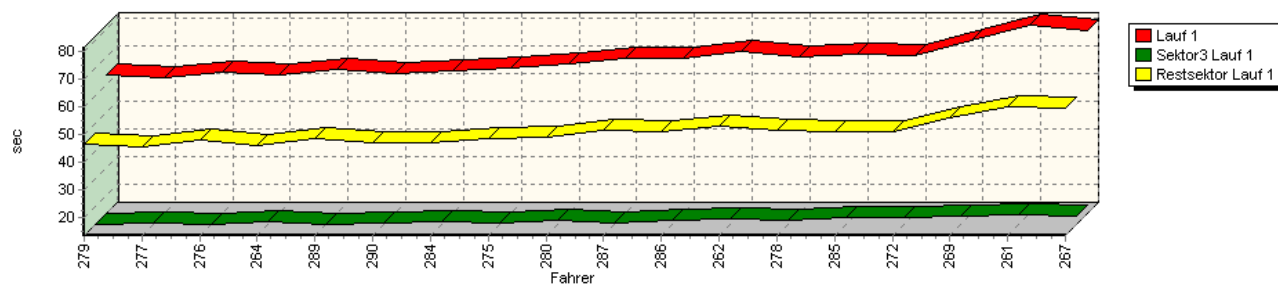
Speed-Diagramm Lauf 1



Sektor-Diagramm (Start) Lauf 1

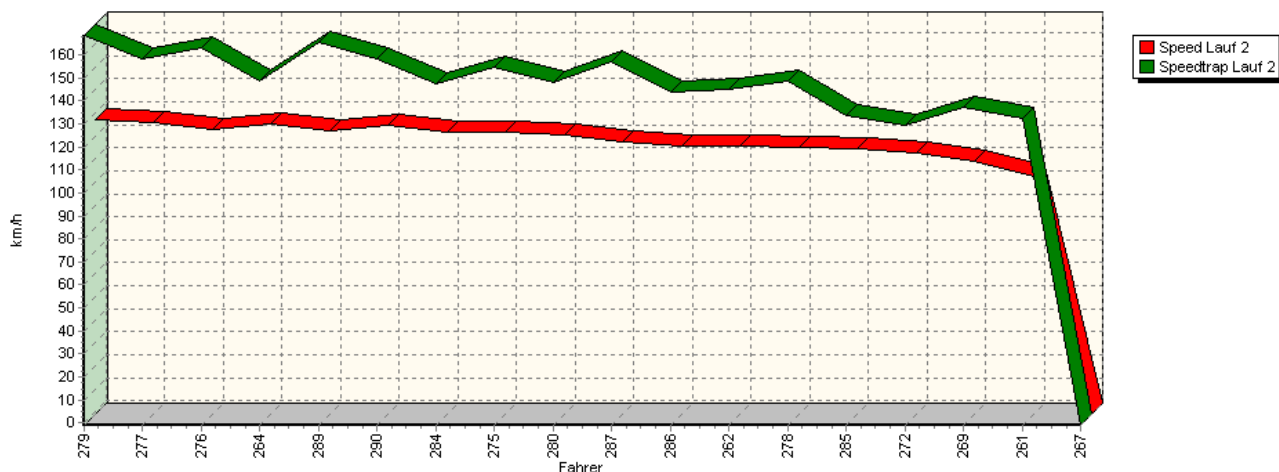


Sektor-Diagramm (Rest) Lauf 1

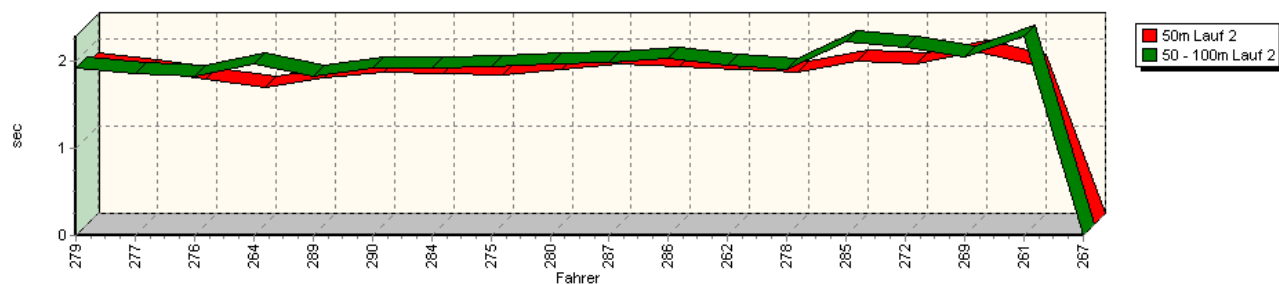


## Sektorzeiten & Speeds - Gruppe H (DMSB, OSK) bis 1300 ccm - Klasse 19

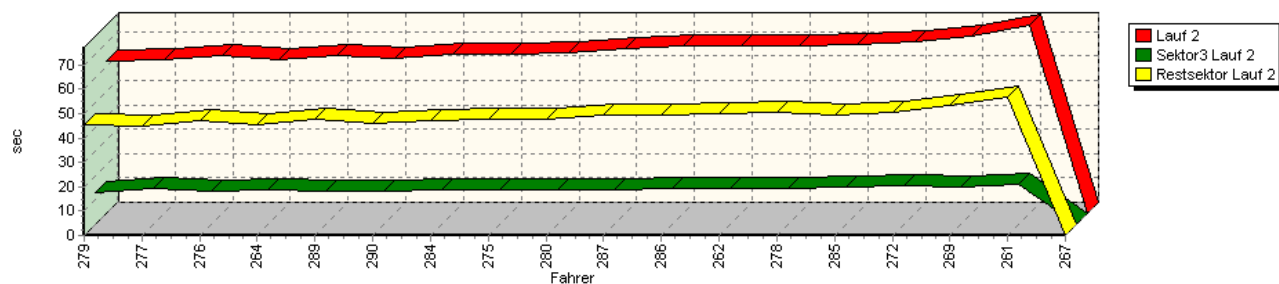
Speed-Diagramm Lauf 2



Sektor-Diagramm (Start) Lauf 2

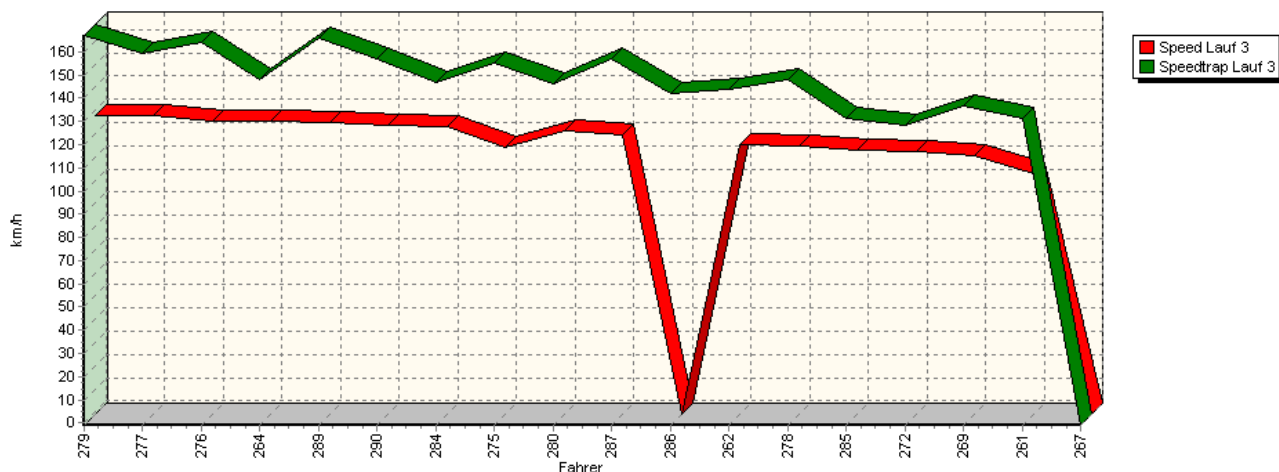


Sektor-Diagramm (Rest) Lauf 2

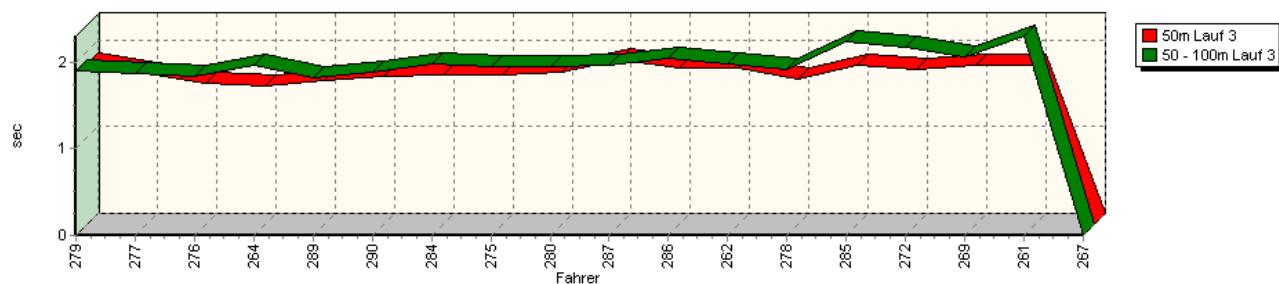


## Sektorzeiten & Speeds - Gruppe H (DMSB, OSK) bis 1300 ccm - Klasse 19

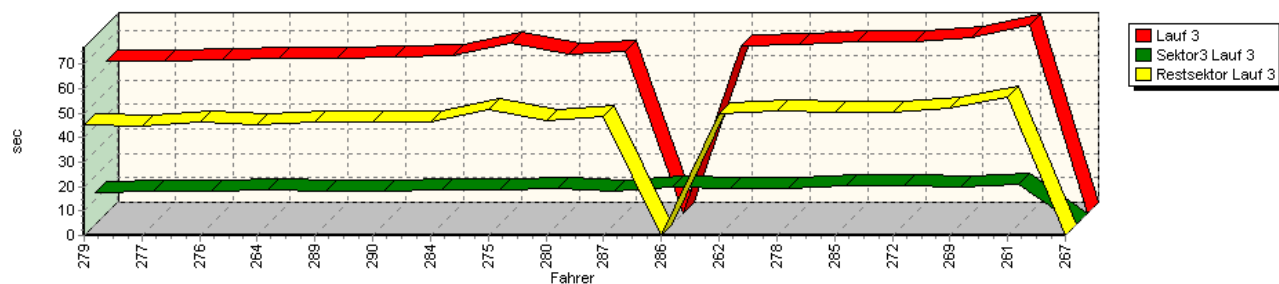
Speed-Diagramm Lauf 3



Sektor-Diagramm (Start) Lauf 3



Sektor-Diagramm (Rest) Lauf 3



Rg.	Nr.	Sektor 1 (15m)	Sektor 2 (15-50m)	Sektor 3	Speed Trap	Sektor 4	Laufzeit	Speed (Lauf)	
1	279	<b>GEHRIG Jürgen</b>		VW Polo					
		Lauf 1:	00:01.980	00:01.985	00:13.354	167,87 km/h	00:46.465	01:03.784	124,17 km/h
		Lauf 2:	00:01.852	00:01.921	00:13.212	168,44 km/h	00:45.395	01:02.380	126,96 km/h
		Lauf 3:	00:01.853	00:01.897	00:13.231	167,12 km/h	00:45.078	01:02.059	127,62 km/h

## Sektorzeiten & Speeds - Gruppe H (DMSB, OSK) bis 1300 ccm - Klasse 19

Rg.	Nr.		Sektor 1 (15m)	Sektor 2 (15-50m)	Sektor 3	Speed Trap	Sektor 4	Laufzeit	Speed (Lauf)
2	277	<b>BERNERT Klaus</b>		VW Polo 16V					
		Lauf 1:	00:01.842	00:01.927	00:13.728	160,08 km/h	00:45.292	01:02.789	126,14 km/h
		Lauf 2:	00:01.761	00:01.857	00:14.625	158,52 km/h	00:44.610	01:02.853	126,01 km/h
		Lauf 3:	00:01.742	00:01.866	00:13.605	159,62 km/h	00:44.879	01:02.092	127,55 km/h
3	276	<b>WEIßDORN Franz</b>		VW Polo					
		Lauf 1:	00:01.723	00:01.869	00:13.291	165,00 km/h	00:47.841	01:04.724	122,37 km/h
		Lauf 2:	00:01.677	00:01.833	00:13.887	163,33 km/h	00:47.106	01:04.503	122,79 km/h
		Lauf 3:	00:01.630	00:01.836	00:13.315	164,11 km/h	00:46.250	01:03.031	125,65 km/h
4	264	<b>SPÖRI Markus</b>		Suzuki Swift 4WD					
		Lauf 1:	00:01.563	00:01.950	00:14.465	148,48 km/h	00:45.852	01:03.830	124,08 km/h
		Lauf 2:	00:01.580	00:01.969	00:14.368	148,66 km/h	00:45.225	01:03.142	125,43 km/h
		Lauf 3:	00:01.603	00:01.965	00:14.353	148,04 km/h	00:45.361	01:03.282	125,15 km/h
5	289	<b>KONRAD Manfred</b>		VW Corrado					
		Lauf 1:	00:01.809	00:01.937	00:13.522	166,20 km/h	00:48.333	01:05.601	120,73 km/h
		Lauf 2:	00:01.691	00:01.826	00:13.613	165,50 km/h	00:47.731	01:04.861	122,11 km/h
		Lauf 3:	00:01.656	00:01.830	00:13.382	165,78 km/h	00:46.657	01:03.525	124,68 km/h
6	290	<b>GLAS Wolfgang</b>		VW Polo Minichberger 16V					
		Lauf 1:	00:01.823	00:01.898	00:13.771	156,72 km/h	00:46.843	01:04.335	123,11 km/h
		Lauf 2:	00:01.750	00:01.930	00:13.819	158,14 km/h	00:46.126	01:03.625	124,48 km/h
		Lauf 3:	00:01.705	00:01.889	00:13.817	157,03 km/h	00:46.541	01:03.952	123,84 km/h
7	284	<b>GÖTZL Helmut</b>		VW Polo					
		Lauf 1:	00:01.858	00:01.991	00:14.196	147,73 km/h	00:47.143	01:05.188	121,49 km/h
		Lauf 2:	00:01.736	00:01.926	00:14.204	147,61 km/h	00:47.400	01:05.266	121,35 km/h
		Lauf 3:	00:01.724	00:01.988	00:14.211	146,82 km/h	00:46.493	01:04.416	122,95 km/h
8	275	<b>VÖLKER Jörg</b>		Suzuki Swift GTi 16V					
		Lauf 1:	00:01.758	00:01.967	00:13.995	155,39 km/h	00:48.366	01:06.086	119,84 km/h
		Lauf 2:	00:01.713	00:01.940	00:14.059	154,89 km/h	00:47.587	01:05.299	121,29 km/h
		Lauf 3:	00:01.722	00:01.945	00:14.021	155,03 km/h	00:51.769	01:09.457	114,03 km/h
9	280	<b>MÜLLER Stefan</b>		VW EMP Polo 8V					
		Lauf 1:	00:01.863	00:01.974	00:14.657	147,54 km/h	00:49.071	01:07.565	117,22 km/h
		Lauf 2:	00:01.789	00:01.969	00:14.341	148,01 km/h	00:47.619	01:05.718	120,51 km/h
		Lauf 3:	00:01.762	00:01.958	00:14.510	146,35 km/h	00:47.142	01:05.372	121,15 km/h
10	287	<b>STELBERG André</b>		VW Schneider Polo I 16V					
		Lauf 1:	00:01.893	00:01.997	00:13.994	151,30 km/h	00:51.546	01:09.430	114,07 km/h
		Lauf 2:	00:01.846	00:01.990	00:13.945	157,00 km/h	00:49.601	01:07.382	117,54 km/h
		Lauf 3:	00:01.896	00:01.974	00:13.847	156,74 km/h	00:48.576	01:06.293	119,47 km/h
11	286	<b>SMYREK Jörg</b>		Audi 50					
		Lauf 1:	00:01.839	00:02.001	00:14.970	144,36 km/h	00:50.860	01:09.670	113,68 km/h
		Lauf 2:	00:01.815	00:02.046	00:14.988	143,72 km/h	00:49.609	01:08.458	115,69 km/h
		Lauf 3:	00:01.815	00:02.040	00:15.143	141,92 km/h	*	A	* km/h
12	262	<b>BAUER Christoph</b>		VW Polo 86C 8V					
		Lauf 1:	00:01.842	00:01.994	00:15.215	141,23 km/h	00:53.055	01:12.106	109,84 km/h
		Lauf 2:	00:01.776	00:01.958	00:14.924	144,73 km/h	00:49.932	01:08.590	115,47 km/h
		Lauf 3:	00:01.813	00:01.985	00:14.900	143,75 km/h	00:50.018	01:08.716	115,26 km/h
13	278	<b>KOHLER Thomas</b>		Fiat X 1/9 16V					
		Lauf 1:	00:01.859	00:01.916	00:14.659	148,15 km/h	00:51.691	01:10.125	112,94 km/h
		Lauf 2:	00:01.757	00:01.916	00:14.585	148,52 km/h	00:50.534	01:08.792	115,13 km/h
		Lauf 3:	00:01.674	00:01.918	00:14.695	147,95 km/h	00:50.744	01:09.031	114,73 km/h

## Sektorzeiten & Speeds - Gruppe H (DMSB, OSK) bis 1300 ccm - Klasse 19

Rg.	Nr.		Sektor 1 (15m)	Sektor 2 (15-50m)	Sektor 3	Speed Trap	Sektor 4	Laufzeit	Speed (Lauf)
14	285	<b>TRIEBSTEIN Christian</b>		VW Polo Twist					
		Lauf 1:	00:01.855	00:02.146	00:16.029	132,17 km/h	00:50.971	01:11.001	111,55 km/h
		Lauf 2:	00:01.875	00:02.229	00:15.580	133,78 km/h	00:49.644	01:09.328	114,24 km/h
		Lauf 3:	00:01.843	00:02.246	00:15.647	131,50 km/h	00:50.425	01:10.161	112,88 km/h
15	272	<b>ABB Nils</b>		VW Polo II 8V					
		Lauf 1:	00:01.836	00:02.152	00:15.801	129,63 km/h	00:51.023	01:10.812	111,84 km/h
		Lauf 2:	00:01.850	00:02.168	00:15.719	129,32 km/h	00:50.517	01:10.254	112,73 km/h
		Lauf 3:	00:01.788	00:02.170	00:15.801	128,25 km/h	00:50.675	01:10.434	112,45 km/h
16	269	<b>RUMPEL Rupert</b>		Simca Rallye					
		Lauf 1:	00:02.133	00:02.131	00:16.145	132,85 km/h	00:55.852	01:16.261	103,85 km/h
		Lauf 2:	00:01.986	00:02.060	00:15.474	137,27 km/h	00:53.362	01:12.882	108,67 km/h
		Lauf 3:	00:01.837	00:02.058	00:15.398	136,91 km/h	00:52.366	01:11.659	110,52 km/h
17	261	<b>MELZOW Thomas</b>		Fiat 127 A					
		Lauf 1:	00:02.104	00:02.469	00:16.930	129,15 km/h	01:00.224	01:21.727	96,91 km/h
		Lauf 2:	00:01.829	00:02.293	00:16.390	132,33 km/h	00:56.731	01:17.243	102,53 km/h
		Lauf 3:	00:01.835	00:02.304	00:16.338	131,23 km/h	00:56.554	01:17.031	102,82 km/h
18	267	<b>EIRICH Raimund</b>		VW Polo 86C					
		Lauf 1:	00:01.841	00:02.198	00:16.088	134,42 km/h	00:59.616	01:19.743	99,32 km/h
		Lauf 2:	*	*	*	* km/h	*	*	* km/h
		Lauf 3:	*	*	*	* km/h	*	*	* km/h