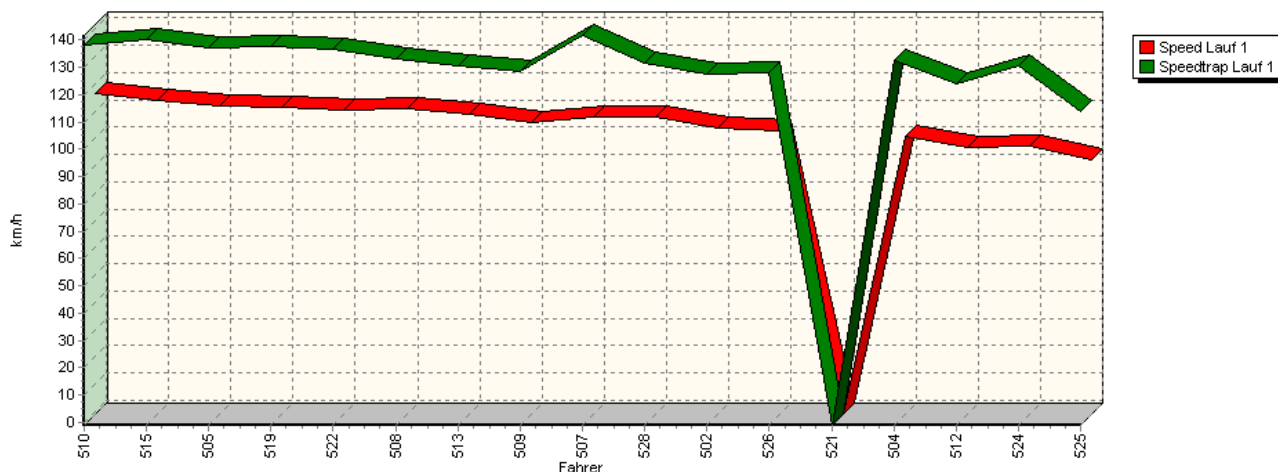
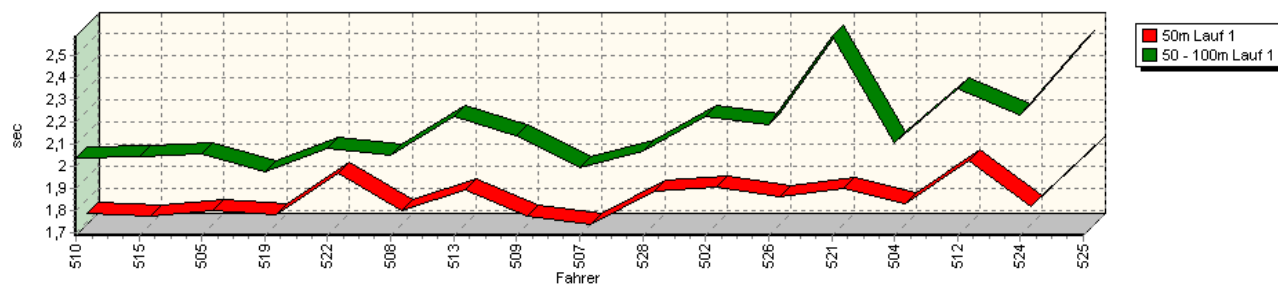


## Sektorzeiten & Speeds - Gruppe H (DMSB, OSK) bis 1300 ccm NSU - Klasse 18

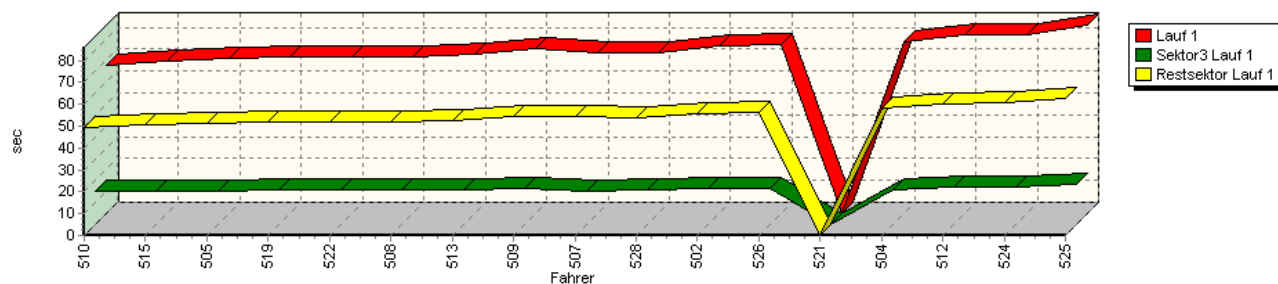
Speed-Diagramm Lauf 1



Sektor-Diagramm (Start) Lauf 1

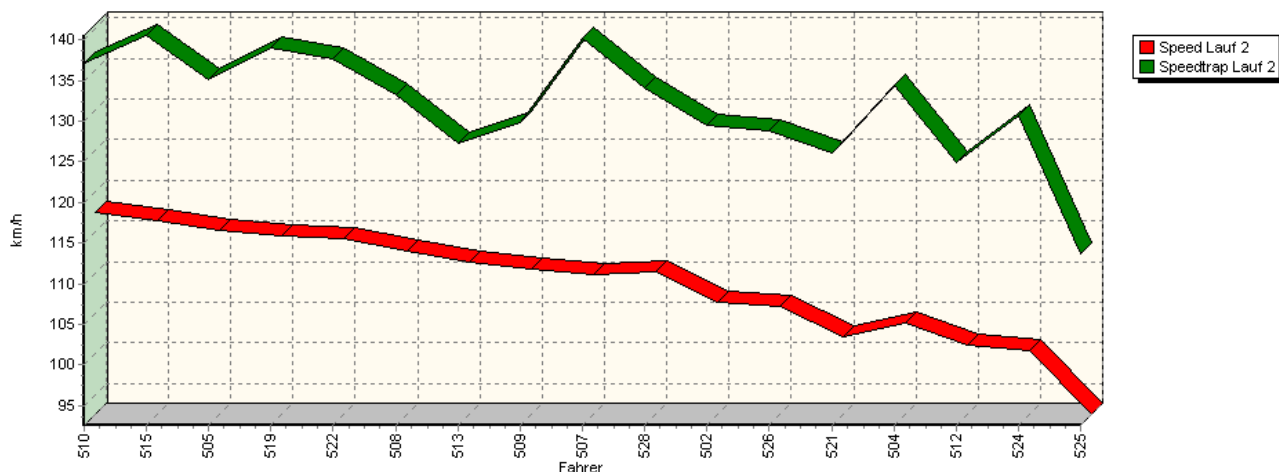


Sektor-Diagramm (Rest) Lauf 1

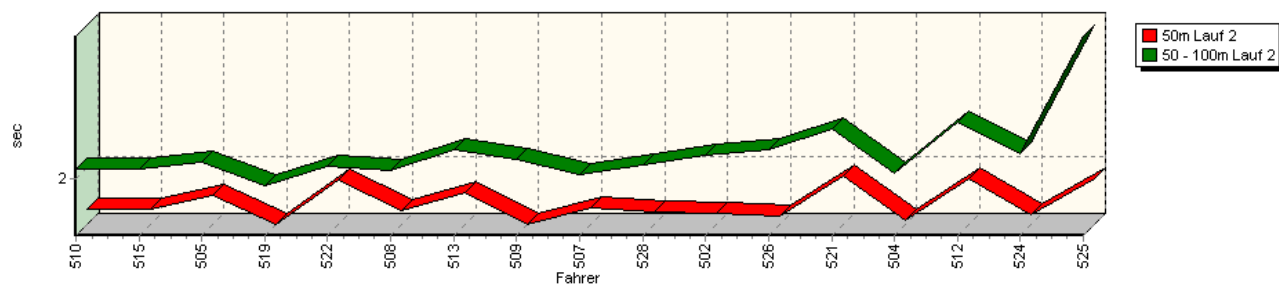


## Sektorzeiten & Speeds - Gruppe H (DMSB, OSK) bis 1300 ccm NSU - Klasse 18

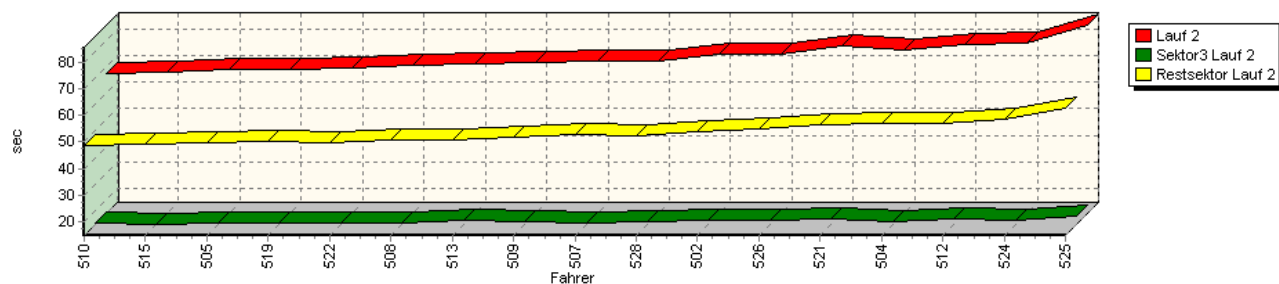
Speed-Diagramm Lauf 2



Sektor-Diagramm (Start) Lauf 2

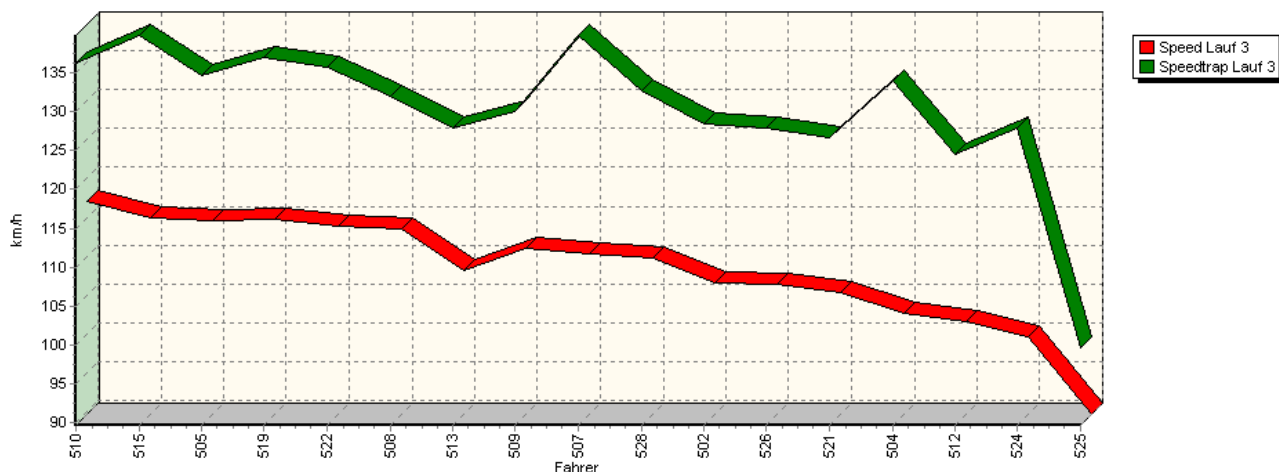


Sektor-Diagramm (Rest) Lauf 2

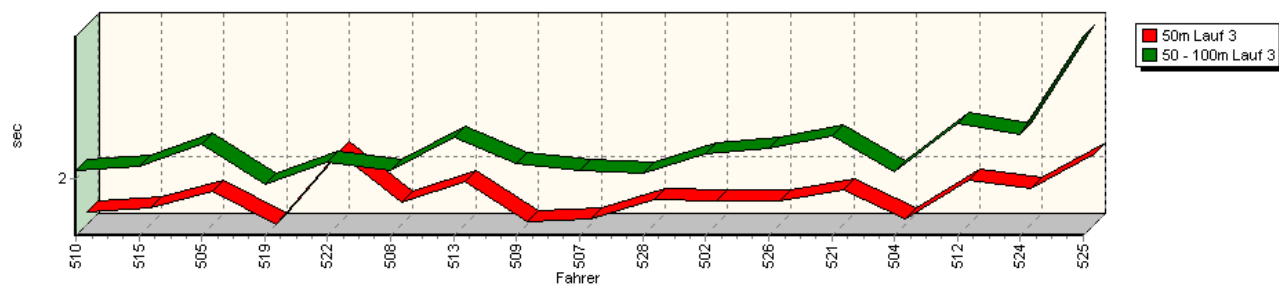


## Sektorzeiten & Speeds - Gruppe H (DMSB, OSK) bis 1300 ccm NSU - Klasse 18

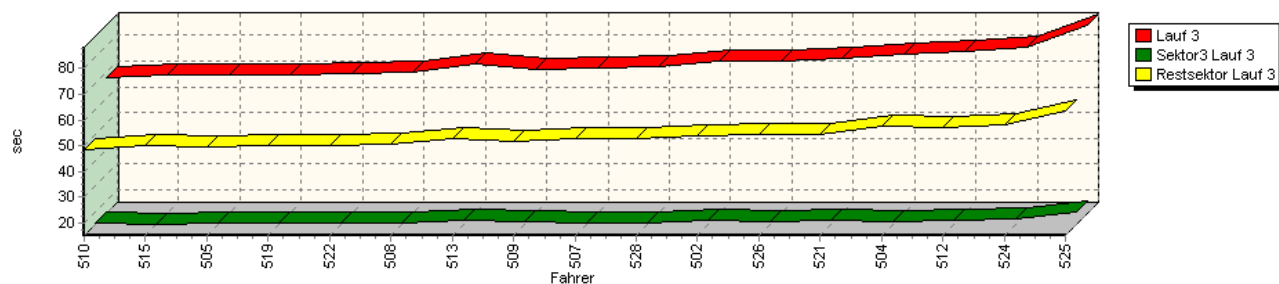
Speed-Diagramm Lauf 3



Sektor-Diagramm (Start) Lauf 3



Sektor-Diagramm (Rest) Lauf 3



Rg.	Nr.	Sektor 1 (15m)	Sektor 2 (15-50m)	Sektor 3	Speed Trap	Sektor 4	Laufzeit	Speed (Lauf)	
1	510	<b>HOFMANN Steffen</b>		NSU TT					
		Lauf 1:	00:01.738	00:02.037	00:15.122	137,90 km/h	00:49.104	01:08.001	116,47 km/h
		Lauf 2:	00:01.759	00:02.057	00:15.269	137,23 km/h	00:48.383	01:07.468	117,39 km/h
		Lauf 3:	00:01.711	00:02.053	00:15.326	136,29 km/h	00:48.548	01:07.638	117,09 km/h

## Sektorzeiten & Speeds - Gruppe H (DMSB, OSK) bis 1300 ccm NSU - Klasse 18

Rg.	Nr.		Sektor 1 (15m)	Sektor 2 (15-50m)	Sektor 3	Speed Trap	Sektor 4	Laufzeit	Speed (Lauf)
2	515	<b>SCHINDLER Uwe</b>	NSU KWR						
		Lauf 1:	00:01.723	00:02.043	00:14.954	140,41 km/h	00:50.870	01:09.590	113,81 km/h
		Lauf 2:	00:01.755	00:02.058	00:14.860	140,55 km/h	00:49.414	01:08.087	116,32 km/h
		Lauf 3:	00:01.732	00:02.077	00:14.999	139,74 km/h	00:50.084	01:08.892	114,96 km/h
3	505	<b>SCHITTENHELM Jochen</b>	NSU TT						
		Lauf 1:	00:01.753	00:02.056	00:15.422	137,10 km/h	00:51.453	01:10.684	112,05 km/h
		Lauf 2:	00:01.842	00:02.101	00:15.412	135,19 km/h	00:49.433	01:08.788	115,14 km/h
		Lauf 3:	00:01.842	00:02.228	00:15.543	134,57 km/h	00:49.562	01:09.175	114,49 km/h
4	519	<b>DAVIDOVIC Jörg</b>	NSU TT						
		Lauf 1:	00:01.729	00:01.978	00:15.522	137,58 km/h	00:52.019	01:11.248	111,16 km/h
		Lauf 2:	00:01.667	00:01.964	00:15.204	139,07 km/h	00:50.312	01:09.147	114,54 km/h
		Lauf 3:	00:01.628	00:01.965	00:15.318	136,88 km/h	00:50.154	01:09.065	114,68 km/h
5	522	<b>KRYSTOFIAK Thomas</b>	NSU 1200c KWR						
		Lauf 1:	00:01.917	00:02.080	00:15.582	136,85 km/h	00:52.070	01:11.649	110,54 km/h
		Lauf 2:	00:01.930	00:02.072	00:15.566	137,62 km/h	00:49.745	01:09.313	114,26 km/h
		Lauf 3:	00:02.094	00:02.105	00:15.466	135,66 km/h	00:49.913	01:09.578	113,83 km/h
6	508	<b>HOFMANN Lukas</b>	NSU TT						
		Lauf 1:	00:01.750	00:02.052	00:15.721	132,90 km/h	00:51.973	01:11.496	110,78 km/h
		Lauf 2:	00:01.746	00:02.054	00:15.585	133,19 km/h	00:50.900	01:10.285	112,68 km/h
		Lauf 3:	00:01.769	00:02.056	00:15.645	132,06 km/h	00:50.364	01:09.834	113,41 km/h
7	513	<b>FASSBENDER Walter</b>	NSU Grewe						
		Lauf 1:	00:01.842	00:02.227	00:16.066	130,54 km/h	00:52.614	01:12.749	108,87 km/h
		Lauf 2:	00:01.851	00:02.177	00:16.433	127,24 km/h	00:50.737	01:11.198	111,24 km/h
		Lauf 3:	00:01.909	00:02.267	00:16.513	127,83 km/h	00:52.518	01:13.207	108,19 km/h
8	509	<b>MEURER Karlheinz</b>	NSU TT						
		Lauf 1:	00:01.724	00:02.135	00:16.488	128,30 km/h	00:54.639	01:14.986	105,62 km/h
		Lauf 2:	00:01.670	00:02.115	00:16.071	129,80 km/h	00:51.882	01:11.738	110,40 km/h
		Lauf 3:	00:01.644	00:02.098	00:15.945	130,09 km/h	00:51.639	01:11.326	111,04 km/h
9	507	<b>FLEISCHER Horst</b>	NSU KWR						
		Lauf 1:	00:01.688	00:01.991	00:15.411	141,69 km/h	00:54.263	01:13.353	107,97 km/h
		Lauf 2:	00:01.761	00:02.028	00:15.617	140,25 km/h	00:52.774	01:12.180	109,73 km/h
		Lauf 3:	00:01.664	00:02.049	00:15.458	139,80 km/h	00:52.672	01:11.843	110,24 km/h
10	528	<b>ANGELBERGER Volker</b>	NSU TT						
		Lauf 1:	00:01.835	00:02.066	00:15.594	131,78 km/h	00:53.878	01:13.373	107,94 km/h
		Lauf 2:	00:01.741	00:02.085	00:15.691	134,09 km/h	00:52.397	01:11.914	110,13 km/h
		Lauf 3:	00:01.792	00:02.038	00:15.566	132,65 km/h	00:52.760	01:12.156	109,76 km/h
11	502	<b>RABUS Leonhard</b>	NSU Einfalt TT						
		Lauf 1:	00:01.855	00:02.223	00:16.756	127,40 km/h	00:55.598	01:16.432	103,62 km/h
		Lauf 2:	00:01.729	00:02.145	00:16.562	129,47 km/h	00:54.060	01:14.496	106,32 km/h
		Lauf 3:	00:01.781	00:02.157	00:16.527	128,45 km/h	00:53.894	01:14.359	106,51 km/h
12	526	<b>SCHMIDT Detlef</b>	NSU Bandsch						
		Lauf 1:	00:01.810	00:02.187	00:16.329	127,89 km/h	00:56.614	01:16.940	102,94 km/h
		Lauf 2:	00:01.720	00:02.172	00:16.164	128,89 km/h	00:54.799	01:14.855	105,80 km/h
		Lauf 3:	00:01.783	00:02.199	00:16.176	127,95 km/h	00:54.299	01:14.457	106,37 km/h
13	521	<b>VOIGT Walter</b>	NSU Spiess 1300 TT						
		Lauf 1:	00:01.852	00:02.587	*	* km/h	*	A	* km/h
		Lauf 2:	00:01.957	00:02.298	00:17.026	126,12 km/h	00:56.337	01:17.618	102,04 km/h
		Lauf 3:	00:01.854	00:02.275	00:16.612	126,64 km/h	00:54.499	01:15.240	105,26 km/h

## Sektorzeiten & Speeds - Gruppe H (DMSB, OSK) bis 1300 ccm NSU - Klasse 18

Rg.	Nr.		Sektor 1 (15m)	Sektor 2 (15-50m)	Sektor 3	Speed Trap	Sektor 4	Laufzeit	Speed (Lauf)
14	504	<b>SZOTT Roman</b>		NSU TT					
		Lauf 1:	00:01.783	00:02.107	00:16.080	132,41 km/h	00:58.513	01:18.483	100,91 km/h
		Lauf 2:	00:01.695	00:02.037	00:15.801	134,36 km/h	00:56.726	01:16.259	103,86 km/h
		Lauf 3:	00:01.664	00:02.044	00:15.834	133,89 km/h	00:57.659	01:17.201	102,59 km/h
15	512	<b>NEUNER Bernhard</b>		NSU TT					
		Lauf 1:	00:01.977	00:02.350	00:17.120	124,23 km/h	01:00.423	01:21.870	96,74 km/h
		Lauf 2:	00:01.935	00:02.336	00:16.989	124,91 km/h	00:57.137	01:18.397	101,02 km/h
		Lauf 3:	00:01.919	00:02.362	00:16.806	124,45 km/h	00:56.915	01:18.002	101,54 km/h
16	524	<b>SCHWALBE Wolfgang</b>		NSU TT					
		Lauf 1:	00:01.768	00:02.233	00:17.224	130,64 km/h	01:00.501	01:21.726	96,91 km/h
		Lauf 2:	00:01.721	00:02.149	00:16.632	130,67 km/h	00:58.385	01:18.887	100,40 km/h
		Lauf 3:	00:01.863	00:02.290	00:17.040	127,97 km/h	00:58.280	01:19.473	99,66 km/h
17	525	<b>MARX Wolfgang</b>		NSU Prinz 1000					
		Lauf 1:	00:02.039	00:02.563	00:18.629	113,89 km/h	01:02.823	01:26.054	92,04 km/h
		Lauf 2:	00:01.936	00:02.844	00:18.122	113,72 km/h	01:02.634	01:25.536	92,59 km/h
		Lauf 3:	00:02.087	00:02.929	00:20.047	99,66 km/h	01:03.250	01:28.313	89,68 km/h