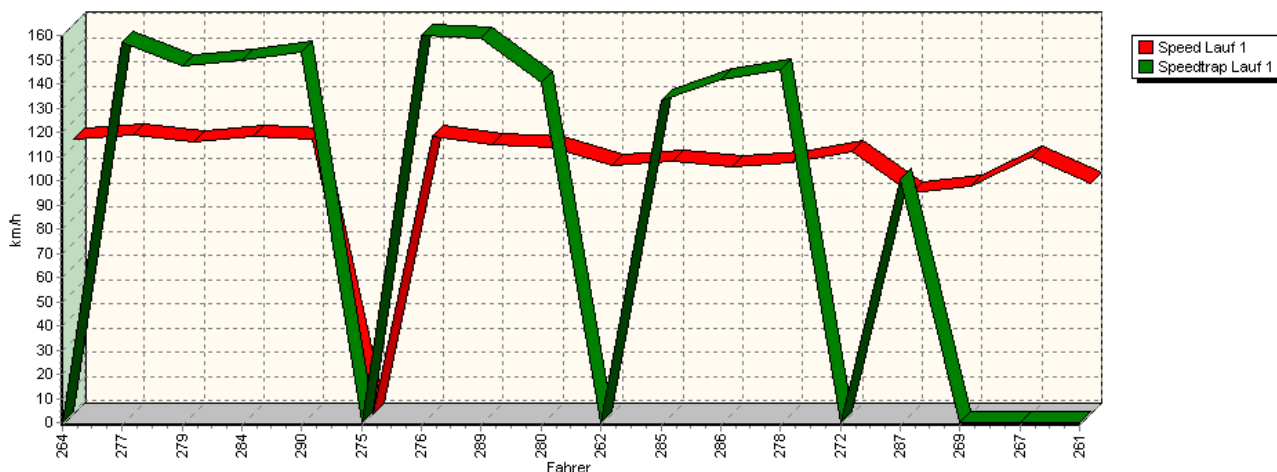
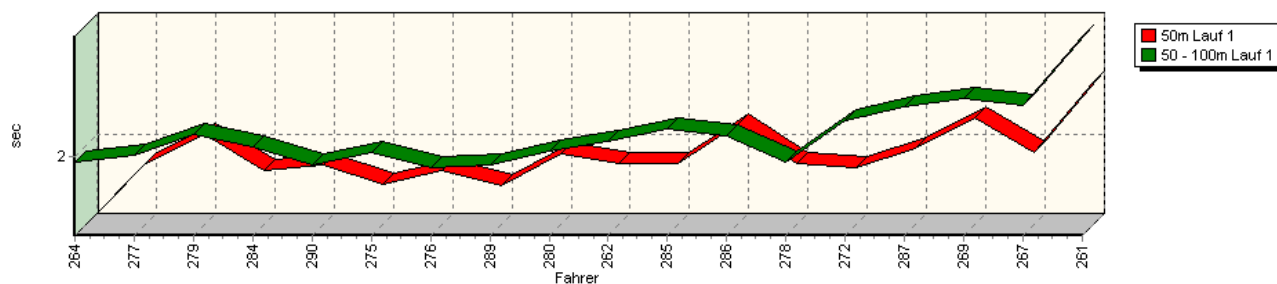


Sektorzeiten & Speeds - Gruppe H (DMSB, OSK) bis 1300 ccm - Klasse 19

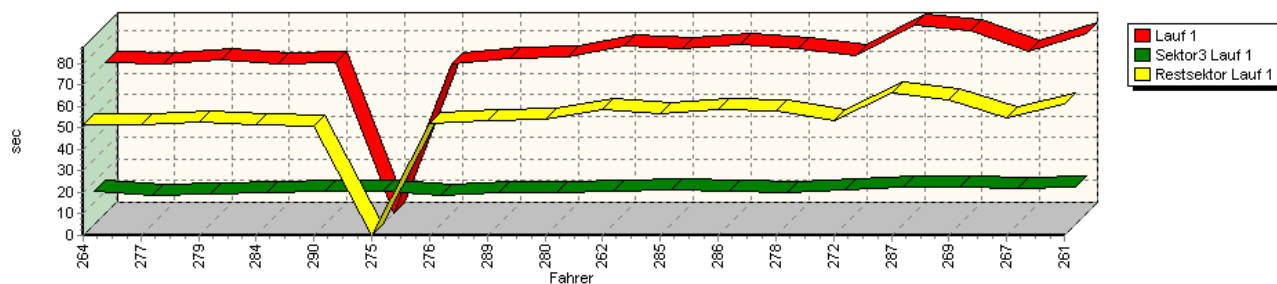
Speed-Diagramm Lauf 1



Sektor-Diagramm (Start) Lauf 1

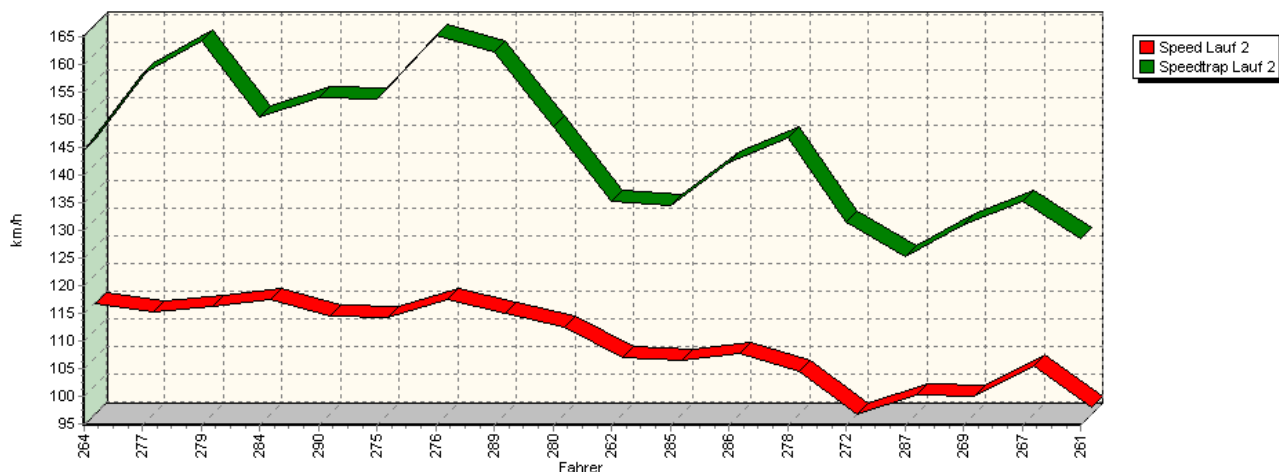


Sektor-Diagramm (Rest) Lauf 1

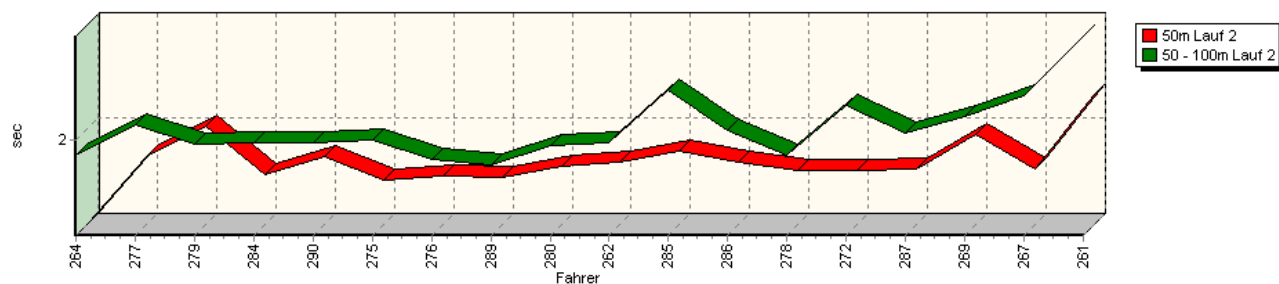


Sektorzeiten & Speeds - Gruppe H (DMSB, OSK) bis 1300 ccm - Klasse 19

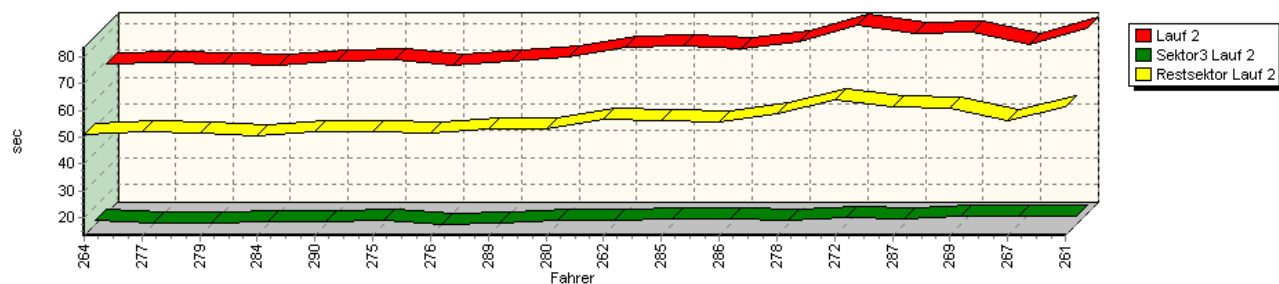
Speed-Diagramm Lauf 2



Sektor-Diagramm (Start) Lauf 2

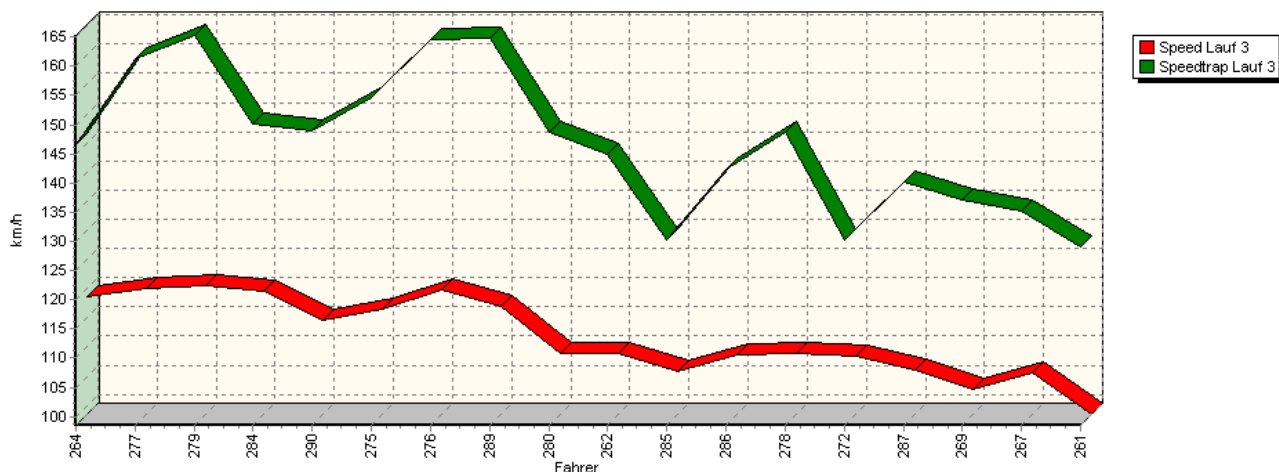


Sektor-Diagramm (Rest) Lauf 2

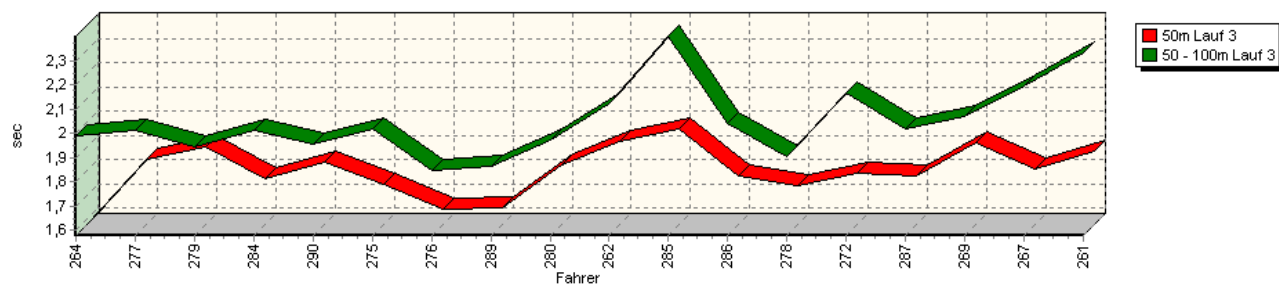


Sektorzeiten & Speeds - Gruppe H (DMSB, OSK) bis 1300 ccm - Klasse 19

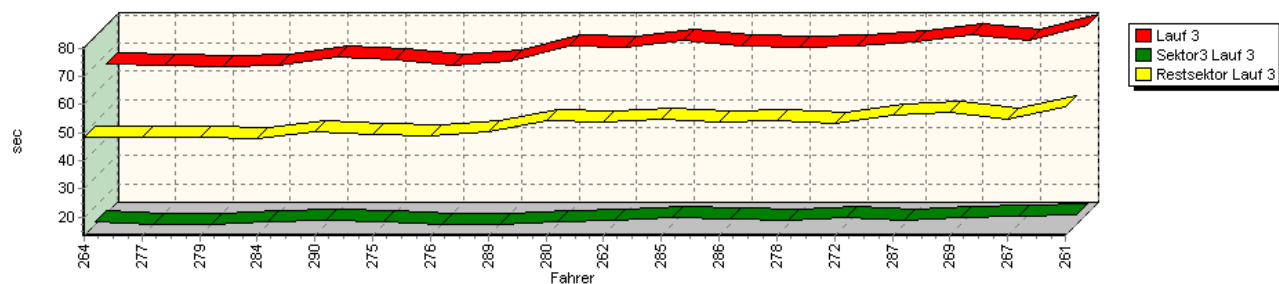
Speed-Diagramm Lauf 3



Sektor-Diagramm (Start) Lauf 3

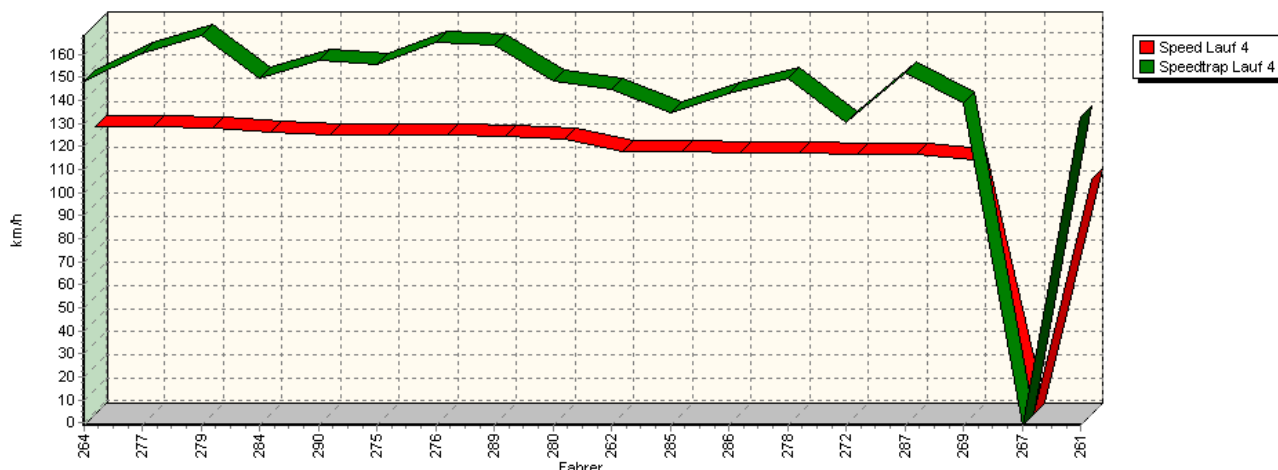


Sektor-Diagramm (Rest) Lauf 3

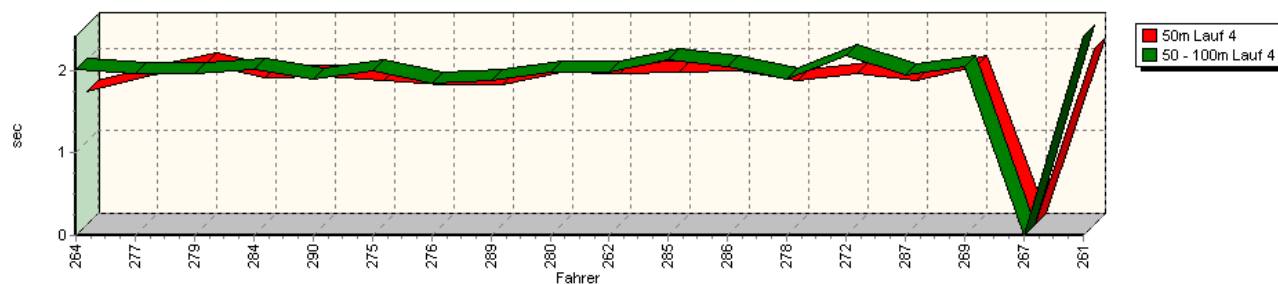


Sektorzeiten & Speeds - Gruppe H (DMSB, OSK) bis 1300 ccm - Klasse 19

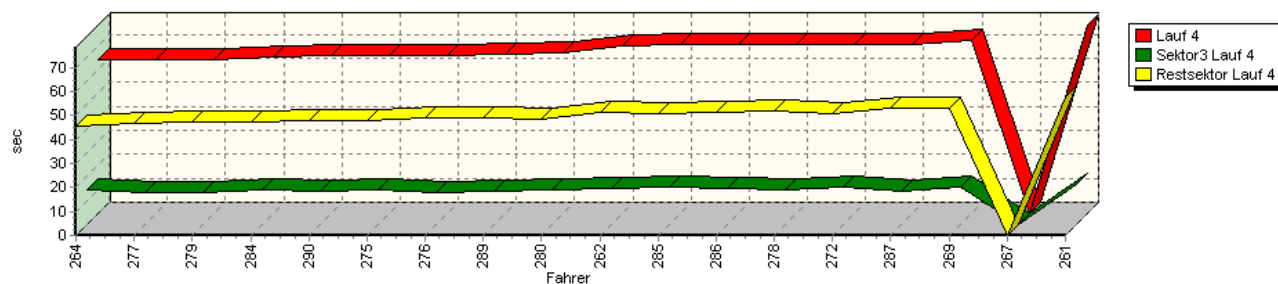
Speed-Diagramm Lauf 4



Sektor-Diagramm (Start) Lauf 4



Sektor-Diagramm (Rest) Lauf 4



Rg.	Nr.	Sektor 1 (15m)	Sektor 2 (15-50m)	Sektor 3	Speed Trap	Sektor 4	Laufzeit	Speed (Lauf)	
1	264	SPÖRI Markus		Suzuki Swift 4WD					
		Lauf 1:	00:01.563	00:01.970	00:15.180	0,00 km/h	00:51.666	01:10.379	112,53 km/h
		Lauf 2:	00:01.518	00:01.923	00:14.675	144,57 km/h	00:50.840	01:08.956	114,86 km/h
		Lauf 3:	00:01.578	00:01.989	00:14.642	146,60 km/h	00:48.497	01:06.706	118,73 km/h
		Lauf 4:	00:01.611	00:02.020	00:14.507	148,28 km/h	00:45.739	01:03.877	123,99 km/h

Sektorzeiten & Speeds - Gruppe H (DMSB, OSK) bis 1300 ccm - Klasse 19

Rg.	Nr.		Sektor 1 (15m)	Sektor 2 (15-50m)	Sektor 3	Speed Trap	Sektor 4	Laufzeit	Speed (Lauf)
2	277	BERNERT Klaus		VW Polo 16V					
		Lauf 1:	00:01.903	00:02.010	00:13.778	157,19 km/h	00:51.669	01:09.360	114,19 km/h
		Lauf 2:	00:01.861	00:02.082	00:13.882	158,24 km/h	00:52.033	01:09.858	113,37 km/h
		Lauf 3:	00:01.845	00:02.012	00:13.624	161,32 km/h	00:48.515	01:05.996	120,01 km/h
		Lauf 4:	00:01.788	00:01.955	00:13.577	160,54 km/h	00:46.681	01:04.001	123,75 km/h
3	279	GEHRIG Jürgen		VW Polo					
		Lauf 1:	00:02.066	00:02.128	00:14.158	147,40 km/h	00:52.807	01:11.159	111,30 km/h
		Lauf 2:	00:02.016	00:01.984	00:13.629	164,21 km/h	00:51.732	01:09.361	114,18 km/h
		Lauf 3:	00:01.900	00:01.946	00:13.480	165,30 km/h	00:48.432	01:05.758	120,44 km/h
		Lauf 4:	00:01.937	00:01.967	00:13.299	168,16 km/h	00:47.200	01:04.403	122,98 km/h
4	284	GÖTZL Helmut		VW Polo					
		Lauf 1:	00:01.866	00:02.058	00:14.574	149,77 km/h	00:51.245	01:09.743	113,56 km/h
		Lauf 2:	00:01.772	00:01.991	00:14.239	150,46 km/h	00:50.525	01:08.527	115,58 km/h
		Lauf 3:	00:01.764	00:02.010	00:14.315	150,22 km/h	00:48.093	01:06.182	119,67 km/h
		Lauf 4:	00:01.784	00:02.012	00:14.346	149,35 km/h	00:47.239	01:05.381	121,14 km/h
5	290	GLAS Wolfgang		VW Polo Minichberger 16V					
		Lauf 1:	00:01.891	00:01.957	00:15.384	153,40 km/h	00:51.042	01:10.274	112,70 km/h
		Lauf 2:	00:01.862	00:01.986	00:14.293	154,00 km/h	00:52.249	01:10.390	112,52 km/h
		Lauf 3:	00:01.835	00:01.953	00:14.784	148,85 km/h	00:50.545	01:09.117	114,59 km/h
		Lauf 4:	00:01.796	00:01.888	00:14.041	157,44 km/h	00:48.068	01:05.793	120,38 km/h
6	275	VÖLKER Jörg		Suzuki Swift GTi 16V					
		Lauf 1:	00:01.785	00:02.023	00:15.688	0,00 km/h	*	A	* km/h
		Lauf 2:	00:01.742	00:02.006	00:14.776	153,68 km/h	00:51.982	01:10.506	112,33 km/h
		Lauf 3:	00:01.744	00:02.018	00:14.630	154,74 km/h	00:49.593	01:07.985	116,50 km/h
		Lauf 4:	00:01.751	00:02.003	00:14.220	155,45 km/h	00:47.900	01:05.874	120,23 km/h
7	276	WEISDORN Franz		VW Polo					
		Lauf 1:	00:01.863	00:01.941	00:13.712	160,00 km/h	00:51.956	01:09.472	114,00 km/h
		Lauf 2:	00:01.767	00:01.905	00:13.320	165,19 km/h	00:51.611	01:08.603	115,45 km/h
		Lauf 3:	00:01.640	00:01.849	00:13.463	164,57 km/h	00:49.099	01:06.051	119,91 km/h
		Lauf 4:	00:01.692	00:01.843	00:13.255	165,43 km/h	00:49.112	01:05.902	120,18 km/h
8	289	KONRAD Manfred		VW Corrado					
		Lauf 1:	00:01.776	00:01.955	00:14.660	158,78 km/h	00:53.451	01:11.842	110,24 km/h
		Lauf 2:	00:01.755	00:01.878	00:13.579	162,12 km/h	00:52.929	01:10.141	112,91 km/h
		Lauf 3:	00:01.646	00:01.861	00:13.609	164,73 km/h	00:50.541	01:07.657	117,06 km/h
		Lauf 4:	00:01.686	00:01.876	00:13.658	164,11 km/h	00:49.006	01:06.226	119,59 km/h
9	280	MÜLLER Stefan		VW EMP Polo 8V					
		Lauf 1:	00:01.957	00:02.036	00:14.976	140,39 km/h	00:53.743	01:12.712	108,92 km/h
		Lauf 2:	00:01.813	00:01.975	00:14.656	148,75 km/h	00:53.307	01:11.751	110,38 km/h
		Lauf 3:	00:01.822	00:01.970	00:14.479	148,79 km/h	00:54.519	01:12.790	108,81 km/h
		Lauf 4:	00:01.840	00:01.973	00:14.423	148,19 km/h	00:48.681	01:06.917	118,36 km/h
10	262	BAUER Christoph		VW Polo 86C 8V					
		Lauf 1:	00:01.903	00:02.083	00:15.380	0,00 km/h	00:58.433	01:17.799	101,80 km/h
		Lauf 2:	00:01.833	00:01.988	00:15.020	135,15 km/h	00:56.628	01:15.469	104,94 km/h
		Lauf 3:	00:01.918	00:02.118	00:15.046	144,99 km/h	00:53.638	01:12.720	108,91 km/h
		Lauf 4:	00:01.829	00:01.984	00:14.831	144,56 km/h	00:51.414	01:10.058	113,05 km/h

Sektorzeiten & Speeds - Gruppe H (DMSB, OSK) bis 1300 ccm - Klasse 19

Rg.	Nr.		Sektor 1 (15m)	Sektor 2 (15-50m)	Sektor 3	Speed Trap	Sektor 4	Laufzeit	Speed (Lauf)
11	285	TRIEBSTEIN Christian		VW Polo Twist					
		Lauf 1:	00:01.899	00:02.158	00:15.976	133,04 km/h	00:56.477	01:16.510	103,52 km/h
		Lauf 2:	00:01.888	00:02.259	00:15.543	134,39 km/h	00:56.091	01:15.781	104,51 km/h
		Lauf 3:	00:01.971	00:02.400	00:15.946	130,12 km/h	00:54.598	01:14.915	105,72 km/h
		Lauf 4:	00:01.848	00:02.125	00:15.595	134,28 km/h	00:50.661	01:10.229	112,77 km/h
12	286	SMYREK Jörg		Audi 50					
		Lauf 1:	00:02.115	00:02.115	00:15.575	141,65 km/h	00:58.528	01:18.333	101,11 km/h
		Lauf 2:	00:01.835	00:02.054	00:15.228	142,17 km/h	00:55.839	01:14.956	105,66 km/h
		Lauf 3:	00:01.780	00:02.041	00:15.259	142,29 km/h	00:53.752	01:12.832	108,74 km/h
		Lauf 4:	00:01.855	00:02.047	00:15.109	143,04 km/h	00:51.426	01:10.437	112,44 km/h
13	278	KOHLER Thomas		Fiat X 1/9 16V					
		Lauf 1:	00:01.902	00:01.969	00:14.888	145,71 km/h	00:58.127	01:16.886	103,01 km/h
		Lauf 2:	00:01.794	00:01.923	00:14.892	146,66 km/h	00:58.722	01:17.331	102,42 km/h
		Lauf 3:	00:01.740	00:01.902	00:14.893	148,80 km/h	00:54.168	01:12.703	108,94 km/h
		Lauf 4:	00:01.742	00:01.902	00:14.530	149,45 km/h	00:52.279	01:10.453	112,42 km/h
14	272	ABB Nils		VW Polo II 8V					
		Lauf 1:	00:01.879	00:02.200	00:16.326	0,00 km/h	00:53.250	01:13.655	107,53 km/h
		Lauf 2:	00:01.792	00:02.181	00:15.676	131,49 km/h	01:03.920	01:23.569	94,77 km/h
		Lauf 3:	00:01.791	00:02.166	00:15.915	130,20 km/h	00:53.110	01:12.982	108,52 km/h
		Lauf 4:	00:01.829	00:02.174	00:15.706	130,37 km/h	00:51.011	01:10.720	111,99 km/h
15	287	STELBERG André		VW Schneider Polo I 16V					
		Lauf 1:	00:01.987	00:02.280	00:17.158	100,45 km/h	01:06.092	01:27.517	90,50 km/h
		Lauf 2:	00:01.802	00:02.035	00:15.487	125,27 km/h	01:01.179	01:20.503	98,38 km/h
		Lauf 3:	00:01.780	00:02.020	00:14.844	140,15 km/h	00:56.084	01:14.728	105,98 km/h
		Lauf 4:	00:01.744	00:01.939	00:14.021	151,93 km/h	00:53.078	01:10.782	111,89 km/h
16	269	RUMPEL Rupert		Simca Rallye					
		Lauf 1:	00:02.158	00:02.323	00:17.378	0,00 km/h	01:03.327	01:25.186	92,97 km/h
		Lauf 2:	00:01.977	00:02.123	00:16.205	130,99 km/h	01:00.587	01:20.892	97,91 km/h
		Lauf 3:	00:01.912	00:02.069	00:15.702	137,15 km/h	00:57.331	01:17.014	102,84 km/h
		Lauf 4:	00:01.908	00:02.051	00:15.489	138,48 km/h	00:53.050	01:12.498	109,25 km/h
17	267	EIRICH Raimund		VW Polo 86C					
		Lauf 1:	00:01.962	00:02.285	00:16.488	0,00 km/h	00:54.651	01:15.386	105,06 km/h
		Lauf 2:	00:01.799	00:02.226	00:16.226	135,22 km/h	00:56.271	01:16.522	103,50 km/h
		Lauf 3:	00:01.805	00:02.193	00:16.299	135,15 km/h	00:54.667	01:14.964	105,65 km/h
		Lauf 4:	*	*	*	* km/h	*	*	* km/h
18	261	MELZOW Thomas		Fiat 127 A					
		Lauf 1:	00:02.358	00:02.671	00:17.670	0,00 km/h	01:01.075	01:23.774	94,54 km/h
		Lauf 2:	00:02.176	00:02.530	00:16.616	128,36 km/h	01:01.269	01:22.591	95,90 km/h
		Lauf 3:	00:01.883	00:02.333	00:16.721	129,09 km/h	00:59.480	01:20.417	98,49 km/h
		Lauf 4:	00:02.127	00:02.414	00:16.520	132,63 km/h	00:57.549	01:18.610	100,75 km/h