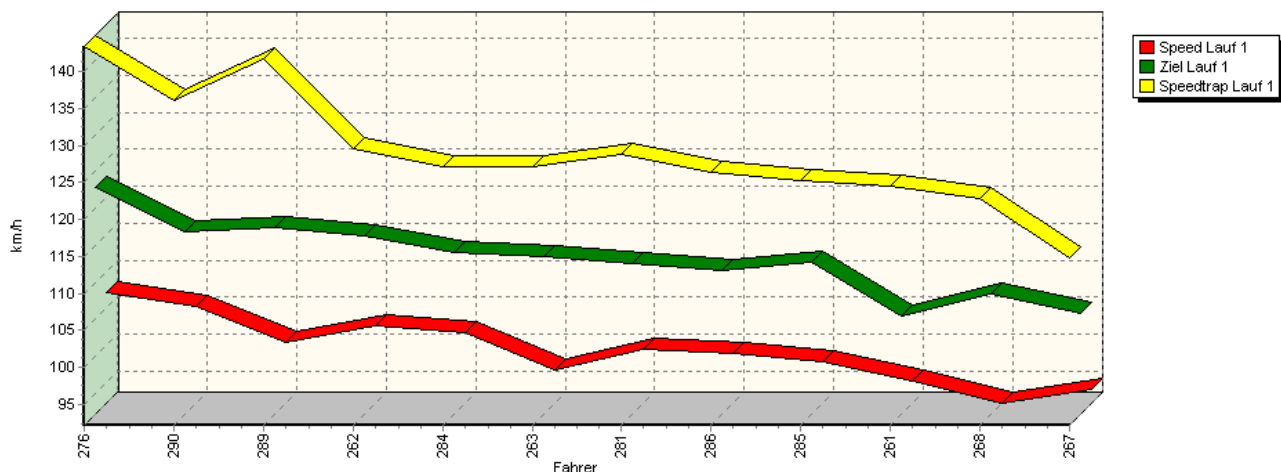
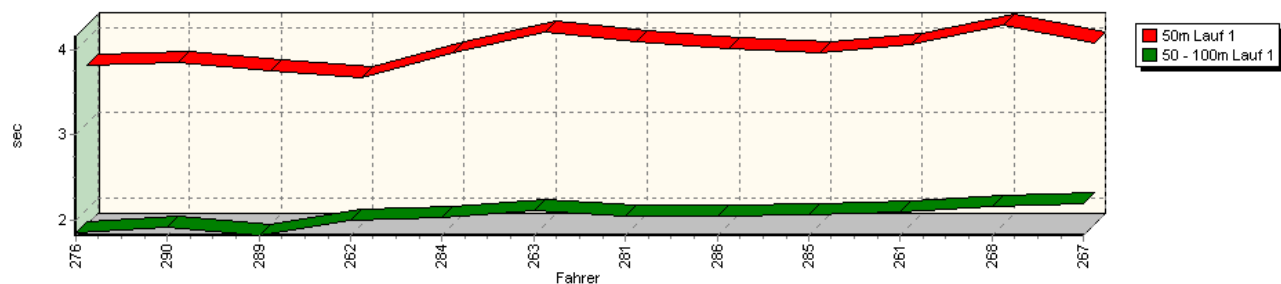


## Sektorzeiten & Speeds - Training - Gruppe H bis 1300 ccm - Klasse 39

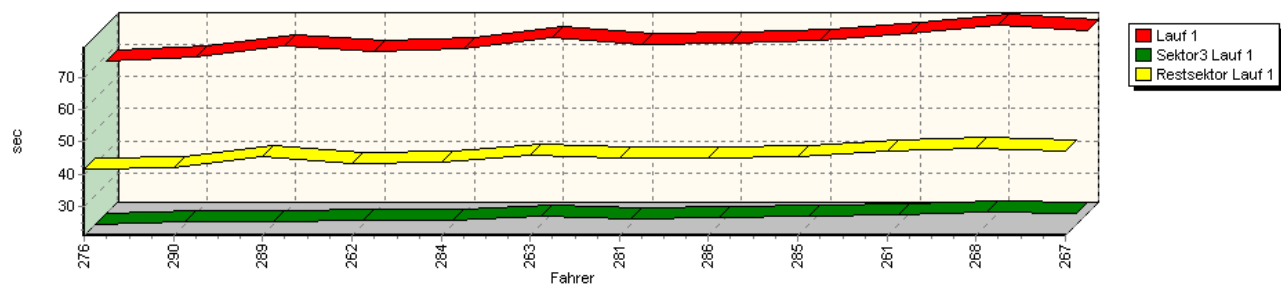
Speed-Diagramm Lauf 1



Sektor-Diagramm (Start) Lauf 1

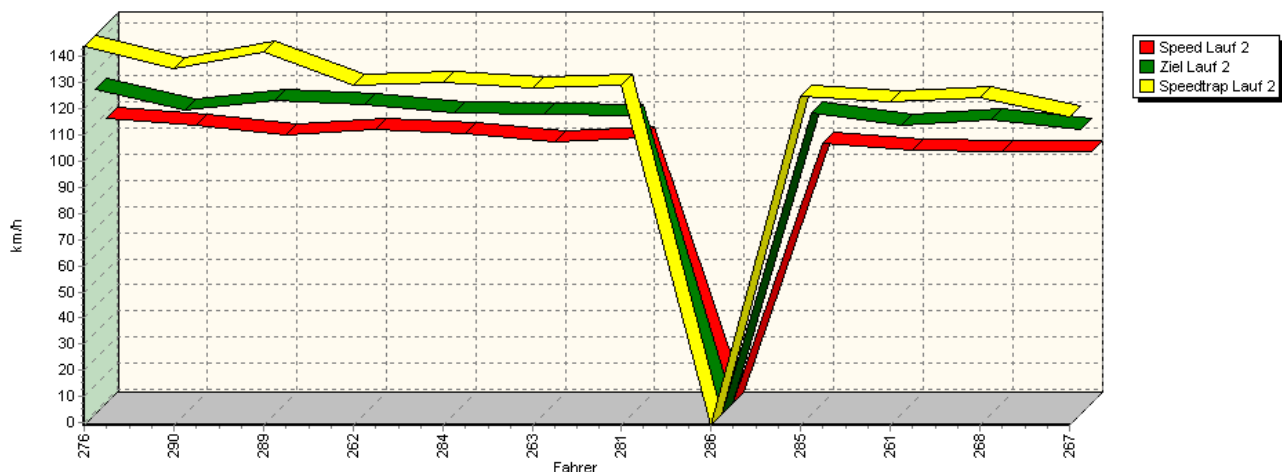


Sektor-Diagramm (Rest) Lauf 1

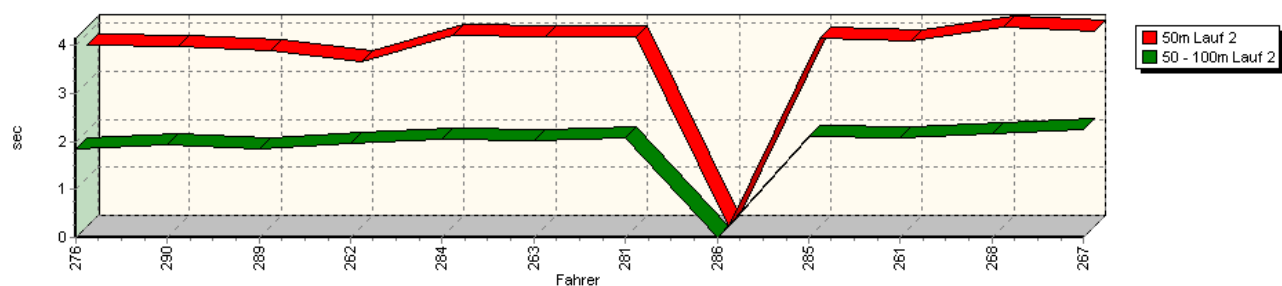


## Sektorzeiten & Speeds - Training - Gruppe H bis 1300 ccm - Klasse 39

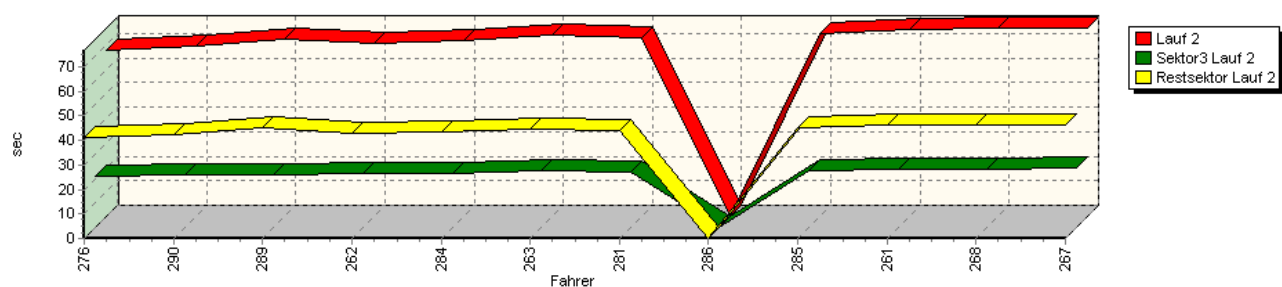
Speed-Diagramm Lauf 2



Sektor-Diagramm (Start) Lauf 2

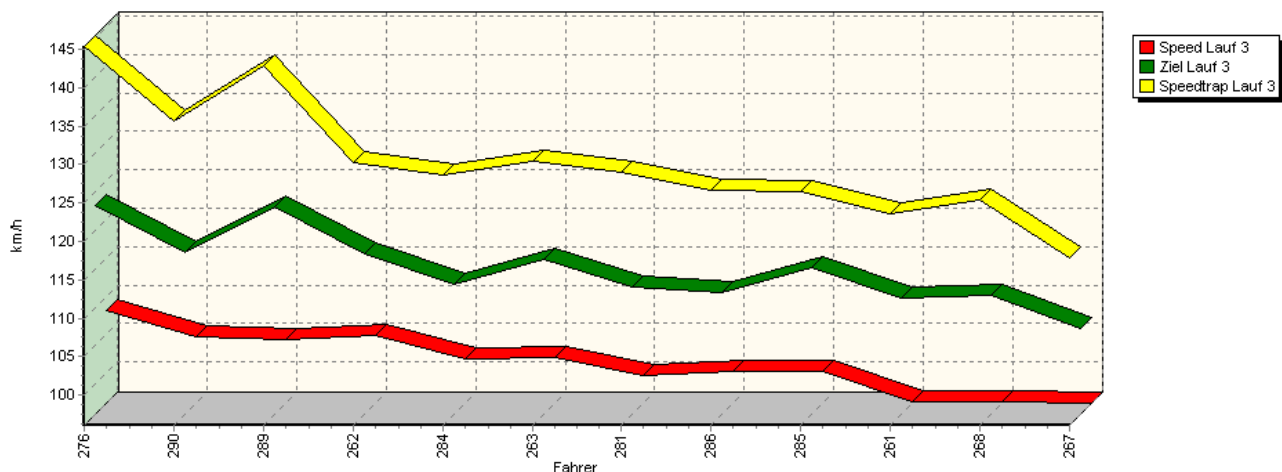


Sektor-Diagramm (Rest) Lauf 2

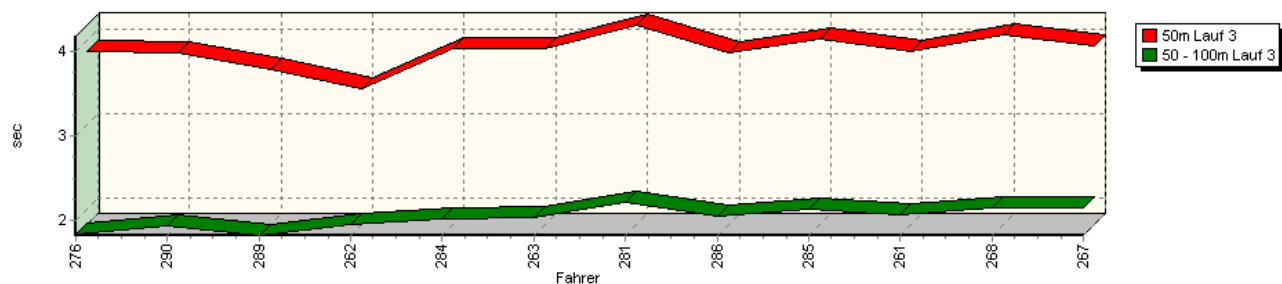


## Sektorzeiten & Speeds - Training - Gruppe H bis 1300 ccm - Klasse 39

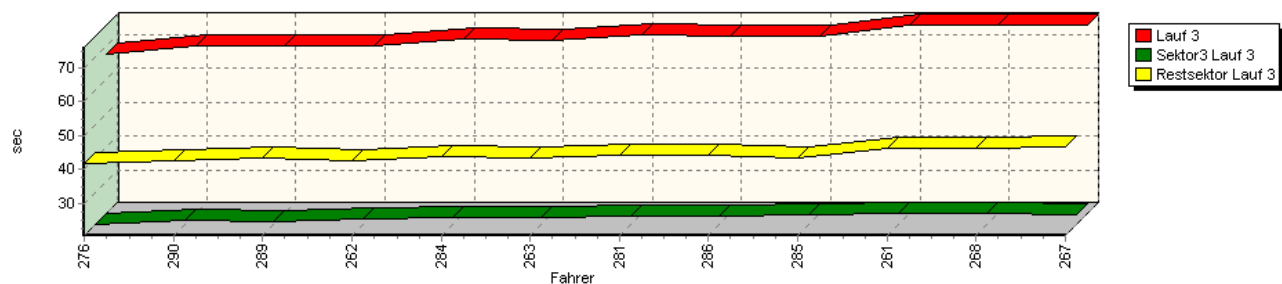
Speed-Diagramm Lauf 3



Sektor-Diagramm (Start) Lauf 3

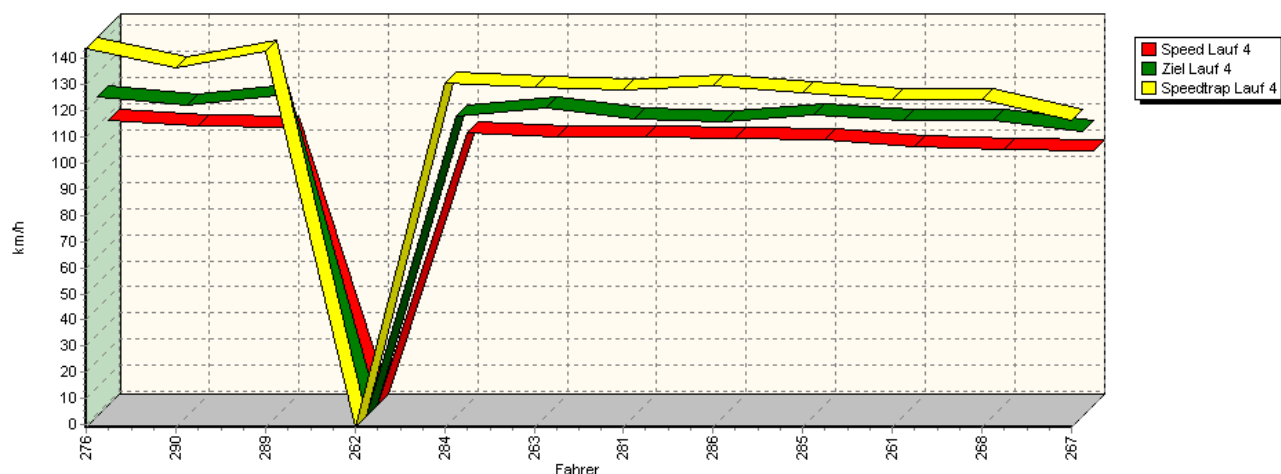


Sektor-Diagramm (Rest) Lauf 3

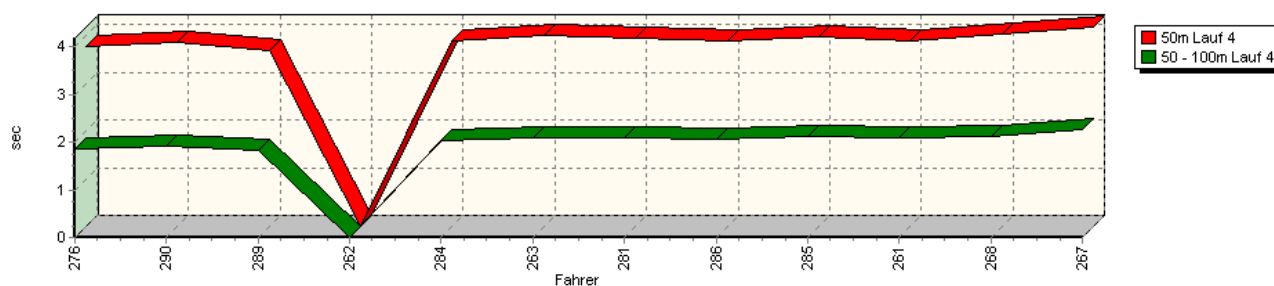


## Sektorzeiten & Speeds - Training - Gruppe H bis 1300 ccm - Klasse 39

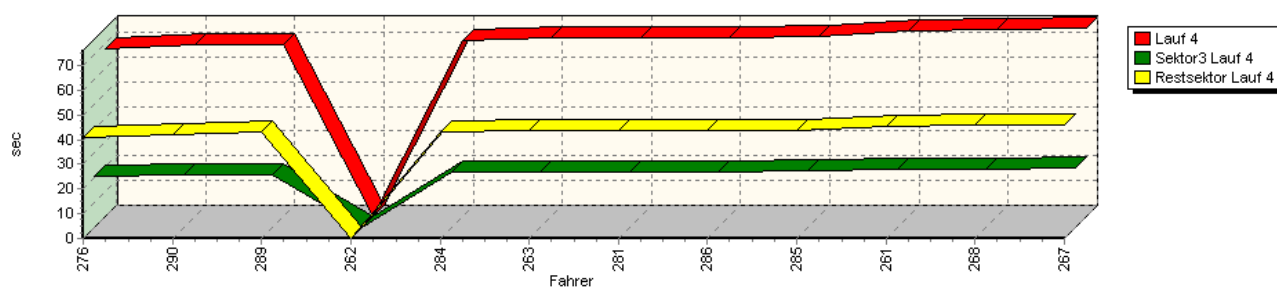
Speed-Diagramm Lauf 4



Sektor-Diagramm (Start) Lauf 4



Sektor-Diagramm (Rest) Lauf 4



Rg.	Nr.	Sektor 1 (50m)	Sektor 2 (50-100m)	Sektor 3	Speed Trap	Sektor 4	Speed (Ziel)	Laufzeit	Speed (Lauf)	
1	276	<b>WEIBDORN Franz</b>		VW Polo I						
		Lauf 1:	00:03.690	00:01.852	00:20.984	143,42 km/h	00:41.684	122,76 km/h	01:08.210	107,14 km/h
		Lauf 2:	00:03.774	00:01.848	00:20.700	143,85 km/h	00:41.429	123,36 km/h	01:07.751	107,87 km/h
		Lauf 3:	00:03.859	00:01.842	00:20.409	145,35 km/h	00:41.505	123,17 km/h	01:07.615	108,08 km/h
		Lauf 4:	00:03.774	00:01.847	00:20.934	143,82 km/h	00:41.096	121,33 km/h	01:07.651	108,03 km/h



## 43. Osnabrücker ADAC Bergrennen

21. und 22. August 2010

Deutsche Bergmeisterschaft 2010

DMSB Bergpokal für Tourenwagen und Rennsportfahrzeuge

DMSB Classic-Berg-Pokal - KW Gruppe H Berg-Cup



### Sektorzeiten & Speeds - Training - Gruppe H bis 1300 ccm - Klasse 39

Rg.	Nr.		Sektor 1 (50m)	Sektor 2 (50-100m)	Sektor 3	Speed Trap	Sektor 4	Speed (Ziel)	Laufzeit	Speed (Lauf)
2	290	<b>EBENHÖH Armin</b>	VW Polo I Minichberger 16V							
		Lauf 1:	00:03.712	00:01.914	00:21.668	136,17 km/h	00:42.128	116,92 km/h	01:09.422	105,27 km/h
		Lauf 2:	00:03.741	00:01.916	00:21.557	135,39 km/h	00:42.277	115,17 km/h	01:09.491	105,16 km/h
		Lauf 3:	00:03.852	00:01.938	00:21.633	135,68 km/h	00:42.352	117,07 km/h	01:09.775	104,74 km/h
		Lauf 4:	00:03.863	00:01.919	00:21.475	136,62 km/h	00:41.951	118,16 km/h	01:09.208	105,60 km/h
3	289	<b>KONRAD Manfred</b>	VW Corrado							
		Lauf 1:	00:03.627	00:01.825	00:21.753	141,65 km/h	00:45.580	117,44 km/h	01:12.785	100,41 km/h
		Lauf 2:	00:03.656	00:01.852	00:21.512	141,82 km/h	00:45.038	118,74 km/h	01:12.058	101,42 km/h
		Lauf 3:	00:03.660	00:01.826	00:21.146	142,76 km/h	00:43.407	123,15 km/h	01:10.039	104,34 km/h
		Lauf 4:	00:03.685	00:01.835	00:21.184	142,55 km/h	00:42.886	121,80 km/h	01:09.590	105,01 km/h
4	262	<b>SPÖRI Markus</b>	Suzuki Swift							
		Lauf 1:	00:03.546	00:02.002	00:22.458	129,53 km/h	00:43.245	116,31 km/h	01:11.251	102,57 km/h
		Lauf 2:	00:03.440	00:01.964	00:22.141	129,30 km/h	00:42.869	117,26 km/h	01:10.414	103,79 km/h
		Lauf 3:	00:03.433	00:01.960	00:21.891	130,30 km/h	00:42.433	116,91 km/h	01:09.717	104,82 km/h
		Lauf 4:	*	*	*	* km/h	*	* km/h	*	* km/h
5	284	<b>GÖTZL Helmut</b>	VW Polo 8V							
		Lauf 1:	00:03.831	00:02.040	00:22.120	127,05 km/h	00:43.903	113,99 km/h	01:11.894	101,65 km/h
		Lauf 2:	00:03.960	00:02.047	00:22.166	130,21 km/h	00:43.447	114,04 km/h	01:11.620	102,04 km/h
		Lauf 3:	00:03.898	00:02.021	00:22.276	128,56 km/h	00:43.600	113,02 km/h	01:11.795	101,79 km/h
		Lauf 4:	00:03.902	00:02.032	00:22.144	130,77 km/h	00:42.940	113,82 km/h	01:11.018	102,90 km/h
6	263	<b>LOHMANN Frank</b>	VW Polo 8V							
		Lauf 1:	00:04.082	00:02.111	00:23.594	127,13 km/h	00:45.775	113,42 km/h	01:15.562	96,71 km/h
		Lauf 2:	00:03.942	00:02.022	00:23.041	128,00 km/h	00:44.854	113,84 km/h	01:13.859	98,95 km/h
		Lauf 3:	00:03.901	00:02.043	00:22.278	130,44 km/h	00:43.446	116,24 km/h	01:11.668	101,97 km/h
		Lauf 4:	00:04.003	00:02.093	00:22.570	128,91 km/h	00:43.395	116,85 km/h	01:12.061	101,41 km/h
7	281	<b>DINGERDISSEN Uwe</b>	VW Polo 8V							
		Lauf 1:	00:03.955	00:02.057	00:22.611	128,91 km/h	00:44.807	112,48 km/h	01:13.430	99,52 km/h
		Lauf 2:	00:03.947	00:02.081	00:22.650	129,13 km/h	00:44.052	113,32 km/h	01:12.730	100,48 km/h
		Lauf 3:	00:04.176	00:02.216	00:22.697	129,05 km/h	00:44.204	112,57 km/h	01:13.293	99,71 km/h
		Lauf 4:	00:03.957	00:02.081	00:22.500	128,20 km/h	00:43.607	112,38 km/h	01:12.145	101,30 km/h
8	286	<b>SMYREK Jörg</b>	Audi 50							
		Lauf 1:	00:03.887	00:02.046	00:22.994	126,37 km/h	00:44.920	111,54 km/h	01:13.847	98,96 km/h
		Lauf 2:	*	*	*	* km/h	*	* km/h	*	* km/h
		Lauf 3:	00:03.856	00:02.053	00:22.744	126,69 km/h	00:44.246	111,86 km/h	01:12.899	100,25 km/h
		Lauf 4:	00:03.878	00:02.048	00:22.398	129,35 km/h	00:43.861	111,72 km/h	01:12.185	101,24 km/h
9	285	<b>TRIEBSTEIN Christian</b>	VW Polo Twist 8V							
		Lauf 1:	00:03.835	00:02.068	00:23.586	125,36 km/h	00:45.225	112,82 km/h	01:14.714	97,81 km/h
		Lauf 2:	00:03.909	00:02.109	00:23.134	124,84 km/h	00:45.149	114,46 km/h	01:14.301	98,36 km/h
		Lauf 3:	00:04.015	00:02.136	00:23.359	126,47 km/h	00:43.463	115,23 km/h	01:12.973	100,15 km/h
		Lauf 4:	00:03.971	00:02.130	00:23.215	126,88 km/h	00:43.408	113,96 km/h	01:12.724	100,49 km/h
10	261	<b>RÜGER Marc-Peter</b>	VW Polo I							
		Lauf 1:	00:03.936	00:02.095	00:23.807	124,59 km/h	00:46.960	105,48 km/h	01:16.798	95,16 km/h
		Lauf 2:	00:03.868	00:02.087	00:23.732	122,83 km/h	00:46.466	109,61 km/h	01:16.153	95,96 km/h
		Lauf 3:	00:03.859	00:02.071	00:23.818	123,54 km/h	00:46.097	111,19 km/h	01:15.845	96,35 km/h
		Lauf 4:	00:03.895	00:02.081	00:23.350	124,02 km/h	00:45.458	112,14 km/h	01:14.784	97,72 km/h



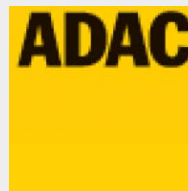
## 43. Osnabrücker ADAC Bergrennen

21. und 22. August 2010

Deutsche Bergmeisterschaft 2010

DMSB Bergpokal für Tourenwagen und Rennsportfahrzeuge

DMSB Classic-Berg-Pokal - KW Gruppe H Berg-Cup



### Sektorzeiten & Speeds - Training - Gruppe H bis 1300 ccm - Klasse 39

Rg.	Nr.		Sektor 1 (50m)	Sektor 2 (50-100m)	Sektor 3	Speed Trap	Sektor 4	Speed (Ziel)	Laufzeit	Speed (Lauf)
11	268	<b>SCHULTE Manfred</b>		Citröen AX Sport						
		Lauf 1:	00:04.155	00:02.160	00:24.917	122,93 km/h	00:48.070	108,50 km/h	01:19.302	92,15 km/h
		Lauf 2:	00:04.147	00:02.168	00:23.877	124,25 km/h	00:46.534	111,58 km/h	01:16.726	95,25 km/h
		Lauf 3:	00:04.067	00:02.151	00:23.542	125,46 km/h	00:46.161	111,51 km/h	01:15.921	96,26 km/h
		Lauf 4:	00:04.042	00:02.133	00:23.555	124,11 km/h	00:45.835	112,36 km/h	01:15.565	96,71 km/h
12	267	<b>EIRICH Raimund</b>		VW Polo 86C						
		Lauf 1:	00:03.941	00:02.194	00:24.561	114,77 km/h	00:47.098	105,81 km/h	01:17.794	93,94 km/h
		Lauf 2:	00:04.072	00:02.257	00:24.064	116,98 km/h	00:46.400	108,04 km/h	01:16.793	95,16 km/h
		Lauf 3:	00:03.929	00:02.158	00:23.381	117,91 km/h	00:46.575	107,30 km/h	01:16.043	96,10 km/h
		Lauf 4:	00:04.179	00:02.256	00:24.015	116,11 km/h	00:45.674	107,94 km/h	01:16.124	96,00 km/h