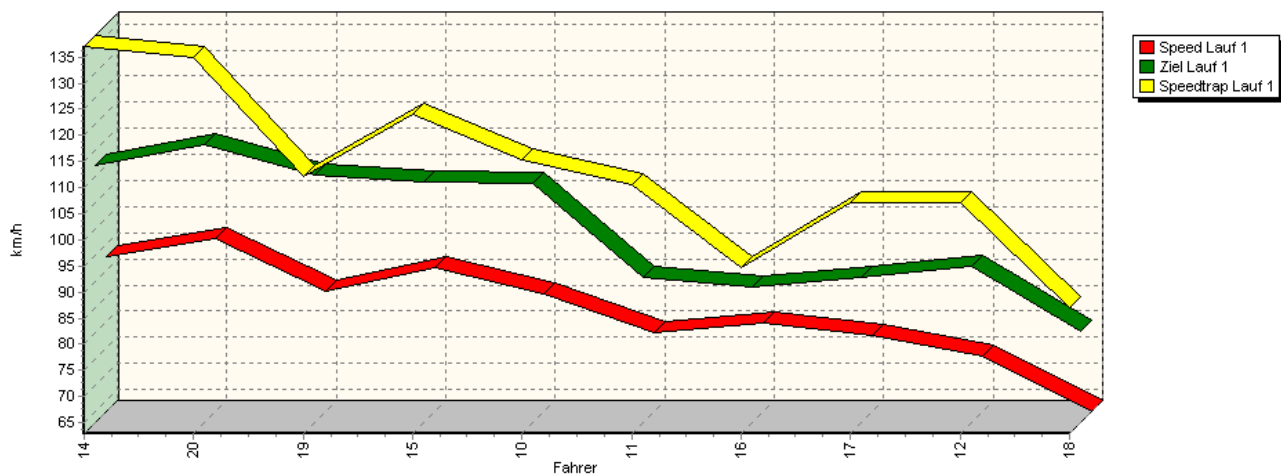
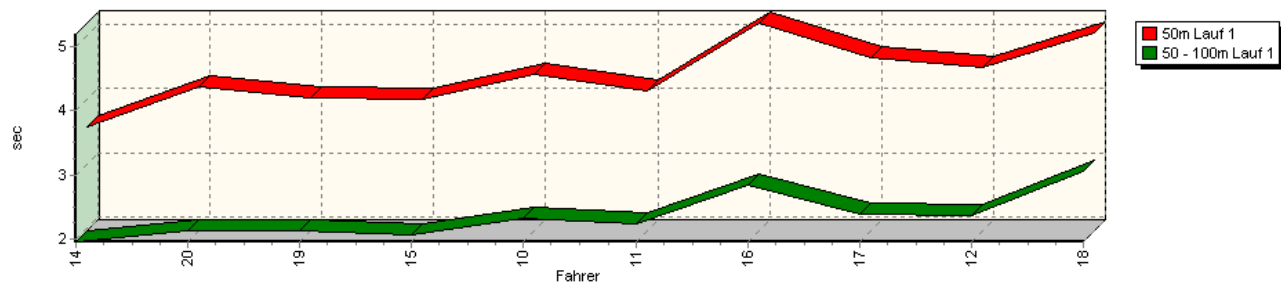


## Sektorzeiten & Speeds - Training - Sport- und Tourenwagen

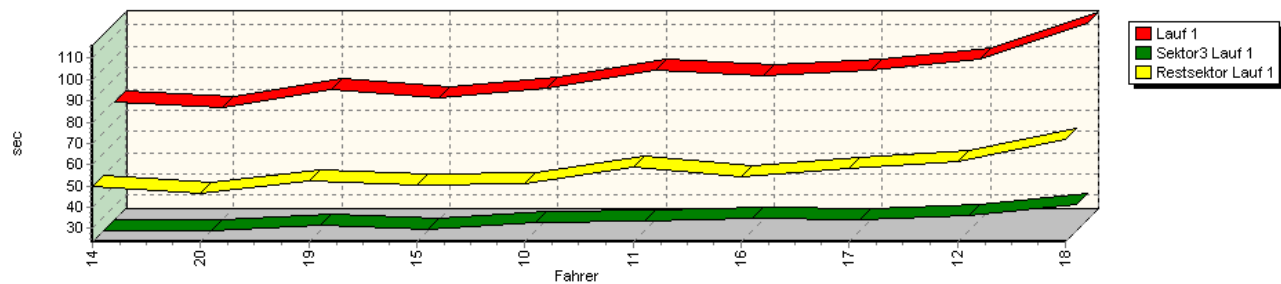
Speed-Diagramm Lauf 1



Sektor-Diagramm (Start) Lauf 1

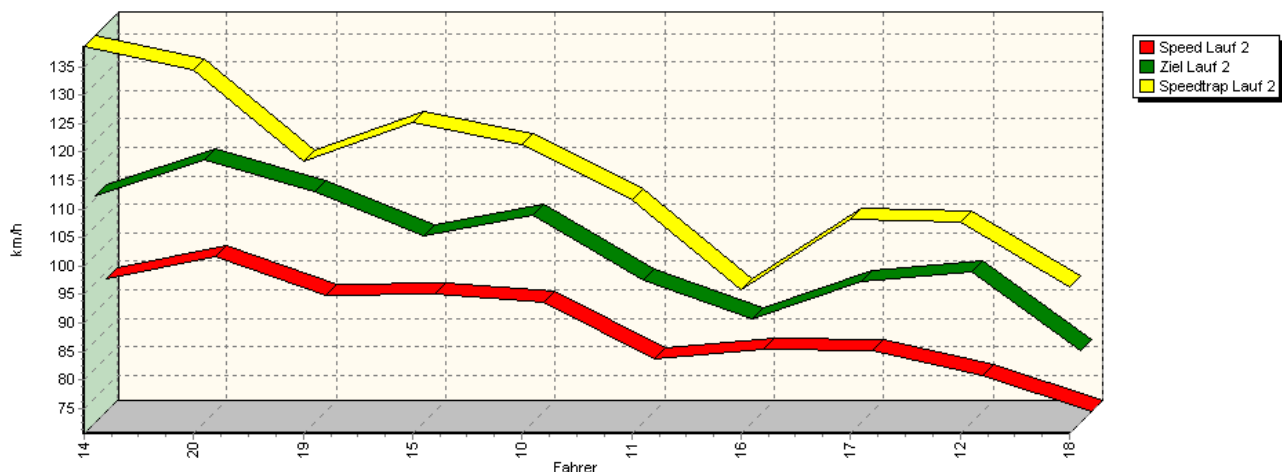


Sektor-Diagramm (Rest) Lauf 1

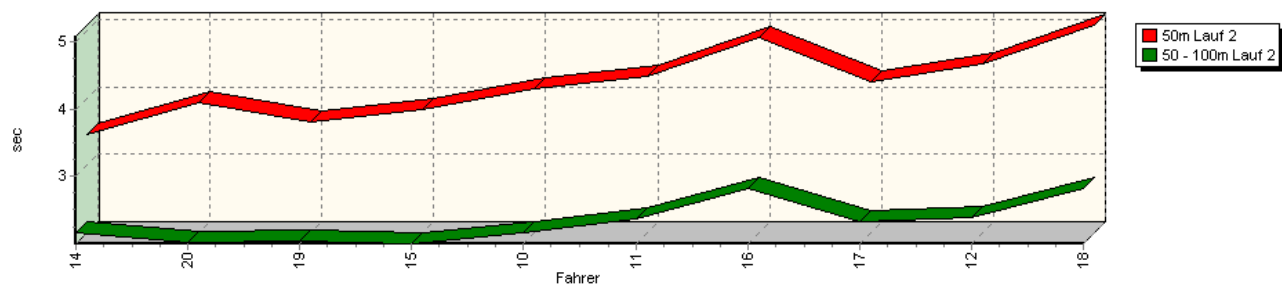


## Sektorzeiten & Speeds - Training - Sport- und Tourenwagen

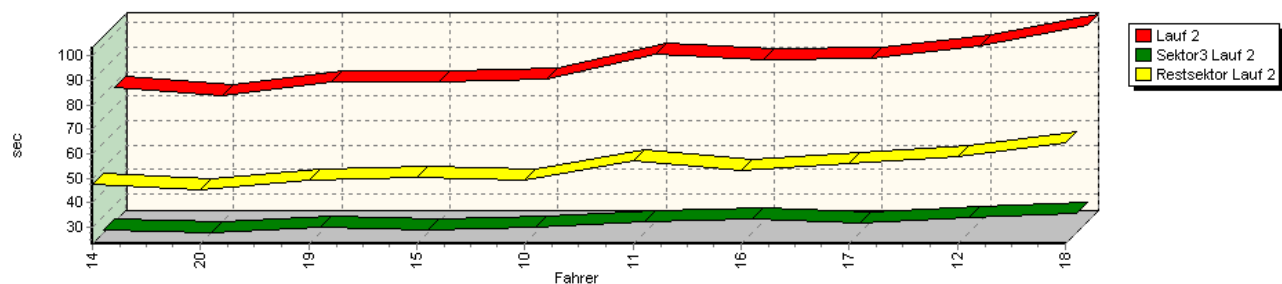
Speed-Diagramm Lauf 2



Sektor-Diagramm (Start) Lauf 2

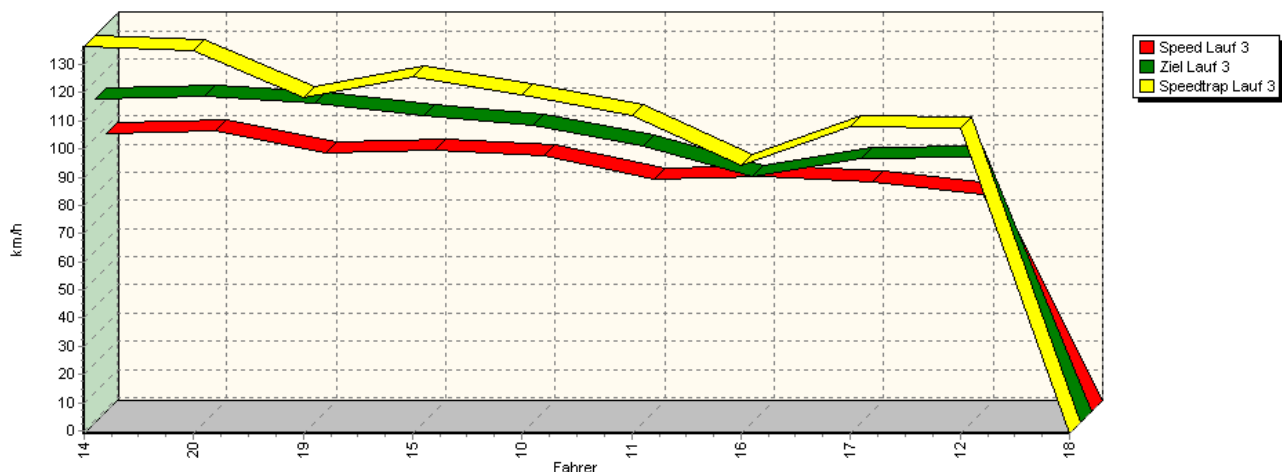


Sektor-Diagramm (Rest) Lauf 2

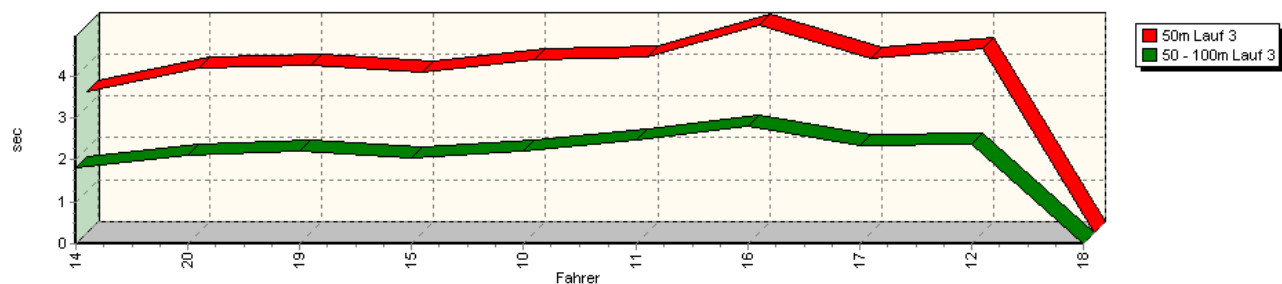


## Sektorzeiten & Speeds - Training - Sport- und Tourenwagen

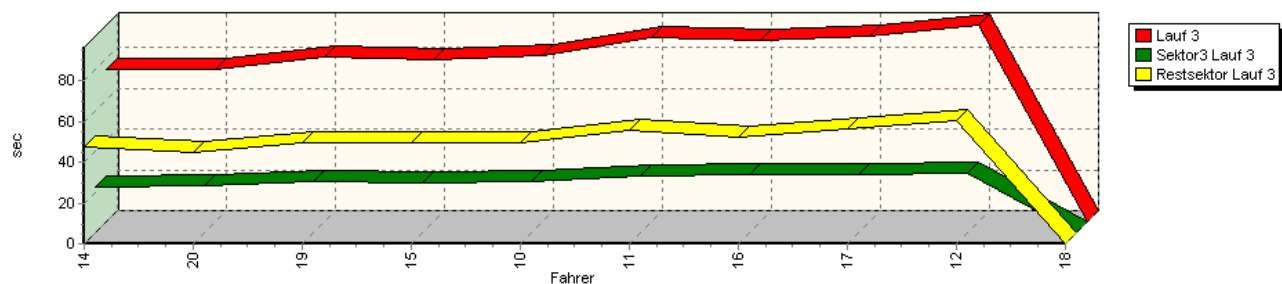
Speed-Diagramm Lauf 3



Sektor-Diagramm (Start) Lauf 3

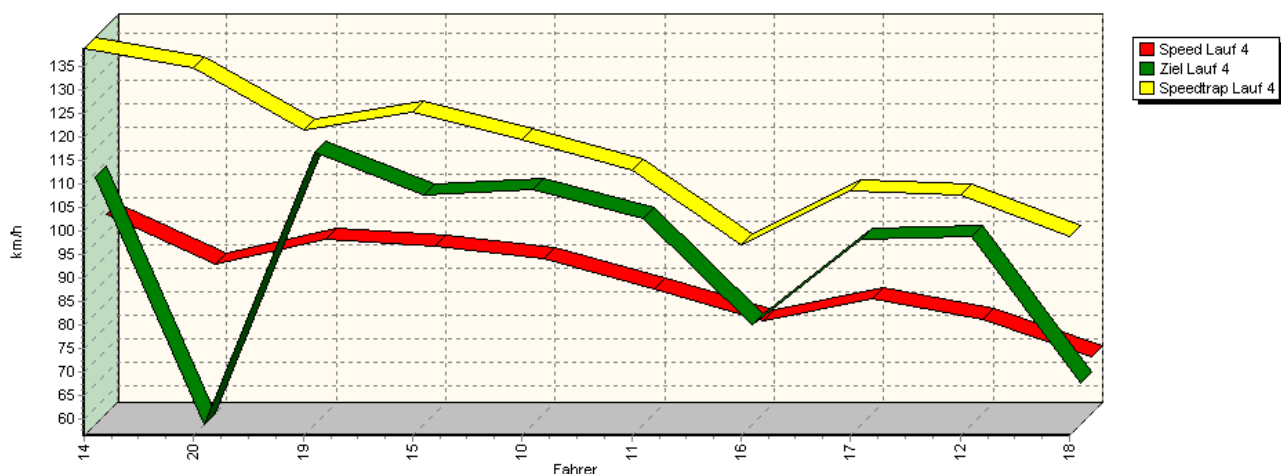


Sektor-Diagramm (Rest) Lauf 3

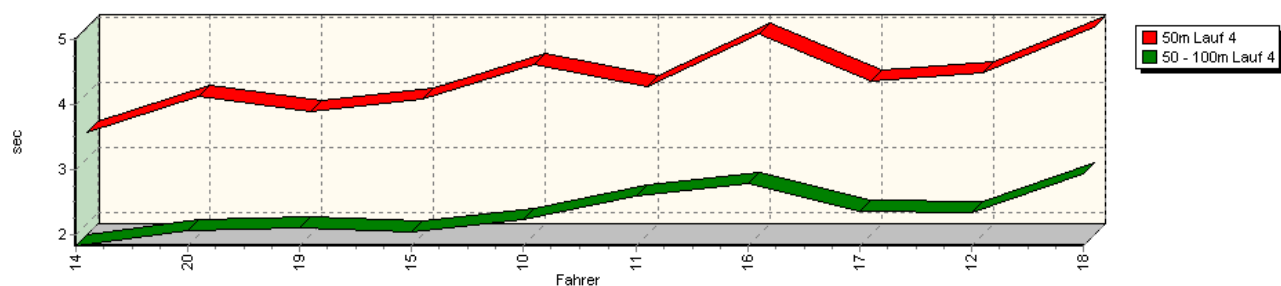


## Sektorzeiten & Speeds - Training - Sport- und Tourenwagen

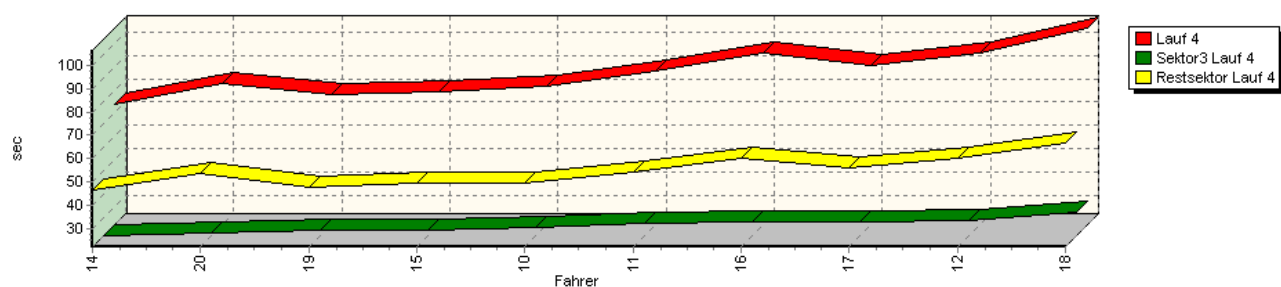
Speed-Diagramm Lauf 4



Sektor-Diagramm (Start) Lauf 4



Sektor-Diagramm (Rest) Lauf 4



| Rg. | Nr. | Sektor 1 (50m)      | Sektor 2 (50-100m) | Sektor 3    | Speed Trap | Sektor 4    | Speed (Ziel) | Laufzeit    | Speed (Lauf) |            |
|-----|-----|---------------------|--------------------|-------------|------------|-------------|--------------|-------------|--------------|------------|
| 1   | 14  | <b>URLAND Ronny</b> |                    | Trabant 601 |            |             |              |             |              |            |
|     |     | Lauf 1:             | 00:03.567          | 00:01.957   | 00:23.903  | 137,02 km/h | 00:49.440    | 112,27 km/h | 01:18.867    | 92,66 km/h |
|     |     | Lauf 2:             | 00:03.461          | 00:02.162   | 00:24.641  | 138,57 km/h | 00:47.648    | 110,49 km/h | 01:17.912    | 93,80 km/h |
|     |     | Lauf 3:             | 00:03.375          | 00:01.821   | 00:22.205  | 136,37 km/h | 00:47.506    | 114,04 km/h | 01:14.907    | 97,56 km/h |
|     |     | Lauf 4:             | 00:03.406          | 00:01.829   | 00:22.097  | 138,75 km/h | 00:46.628    | 109,20 km/h | 01:13.960    | 98,81 km/h |



## 43. Osnabrücker ADAC Bergrennen

21. und 22. August 2010

Deutsche Bergmeisterschaft 2010

DMSB Bergpokal für Tourenwagen und Rennsportfahrzeuge

DMSB Classic-Berg-Pokal - KW Gruppe H Berg-Cup



### Sektorzeiten & Speeds - Training - Sport- und Tourenwagen

| Rg. | Nr. |                           | Sektor 1 (50m)             | Sektor 2 (50-100m) | Sektor 3  | Speed Trap  | Sektor 4  | Speed (Ziel) | Laufzeit  | Speed (Lauf) |
|-----|-----|---------------------------|----------------------------|--------------------|-----------|-------------|-----------|--------------|-----------|--------------|
| 2   | 20  | <b>WOYACK Carsten</b>     | Seat Leon Cupra R          |                    |           |             |           |              |           |              |
|     |     | Lauf 1:                   | 00:04.212                  | 00:02.128          | 00:23.679 | 134,89 km/h | 00:46.198 | 116,20 km/h  | 01:16.217 | 95,88 km/h   |
|     |     | Lauf 2:                   | 00:03.925                  | 00:02.034          | 00:23.236 | 134,46 km/h | 00:45.516 | 116,63 km/h  | 01:14.711 | 97,82 km/h   |
|     |     | Lauf 3:                   | 00:03.942                  | 00:02.099          | 00:23.208 | 134,77 km/h | 00:45.015 | 115,01 km/h  | 01:14.264 | 98,41 km/h   |
|     |     | Lauf 4:                   | 00:03.946                  | 00:02.066          | 00:23.295 | 134,73 km/h | 00:53.566 | 56,51 km/h   | 01:22.873 | 88,18 km/h   |
| 3   | 19  | <b>BASSE Wolfgang</b>     | Martini Renault Formel 3   |                    |           |             |           |              |           |              |
|     |     | Lauf 1:                   | 00:04.021                  | 00:02.137          | 00:26.591 | 112,06 km/h | 00:52.170 | 110,31 km/h  | 01:24.919 | 86,06 km/h   |
|     |     | Lauf 2:                   | 00:03.651                  | 00:02.056          | 00:25.541 | 118,53 km/h | 00:49.020 | 111,18 km/h  | 01:20.268 | 91,04 km/h   |
|     |     | Lauf 3:                   | 00:03.996                  | 00:02.225          | 00:25.141 | 118,20 km/h | 00:49.233 | 112,14 km/h  | 01:20.595 | 90,68 km/h   |
|     |     | Lauf 4:                   | 00:03.728                  | 00:02.097          | 00:24.730 | 121,52 km/h | 00:47.491 | 114,35 km/h  | 01:18.046 | 93,64 km/h   |
| 4   | 15  | <b>SCHAAR Peter</b>       | GMC F40 Aproximada         |                    |           |             |           |              |           |              |
|     |     | Lauf 1:                   | 00:04.000                  | 00:02.059          | 00:24.244 | 123,96 km/h | 00:50.587 | 108,97 km/h  | 01:20.890 | 90,35 km/h   |
|     |     | Lauf 2:                   | 00:03.838                  | 00:02.008          | 00:24.131 | 125,09 km/h | 00:50.132 | 103,28 km/h  | 01:20.109 | 91,23 km/h   |
|     |     | Lauf 3:                   | 00:03.832                  | 00:02.035          | 00:24.096 | 125,41 km/h | 00:49.554 | 107,83 km/h  | 01:19.517 | 91,90 km/h   |
|     |     | Lauf 4:                   | 00:03.914                  | 00:02.044          | 00:24.209 | 125,18 km/h | 00:49.223 | 105,23 km/h  | 01:19.390 | 92,05 km/h   |
| 5   | 10  | <b>FRANZ Jörg</b>         | Austin Mini                |                    |           |             |           |              |           |              |
|     |     | Lauf 1:                   | 00:04.397                  | 00:02.325          | 00:27.605 | 115,44 km/h | 00:51.347 | 108,64 km/h  | 01:25.674 | 85,30 km/h   |
|     |     | Lauf 2:                   | 00:04.143                  | 00:02.166          | 00:25.611 | 121,42 km/h | 00:49.457 | 106,95 km/h  | 01:21.377 | 89,80 km/h   |
|     |     | Lauf 3:                   | 00:04.120                  | 00:02.214          | 00:25.426 | 119,21 km/h | 00:49.751 | 104,66 km/h  | 01:21.511 | 89,66 km/h   |
|     |     | Lauf 4:                   | 00:04.449                  | 00:02.230          | 00:25.667 | 119,43 km/h | 00:49.525 | 106,57 km/h  | 01:21.871 | 89,26 km/h   |
| 6   | 11  | <b>HAUSSTÄTTER Lothar</b> | Lotus Europa Spezial       |                    |           |             |           |              |           |              |
|     |     | Lauf 1:                   | 00:04.129                  | 00:02.244          | 00:28.183 | 110,59 km/h | 00:59.176 | 90,60 km/h   | 01:33.732 | 77,97 km/h   |
|     |     | Lauf 2:                   | 00:04.319                  | 00:02.368          | 00:27.657 | 111,63 km/h | 00:57.174 | 95,53 km/h   | 01:31.518 | 79,85 km/h   |
|     |     | Lauf 3:                   | 00:04.208                  | 00:02.463          | 00:27.809 | 111,75 km/h | 00:55.418 | 96,98 km/h   | 01:29.898 | 81,29 km/h   |
|     |     | Lauf 4:                   | 00:04.090                  | 00:02.584          | 00:27.172 | 112,78 km/h | 00:54.186 | 100,33 km/h  | 01:28.032 | 83,01 km/h   |
| 7   | 16  | <b>NULL Daniel</b>        | BMW 1602                   |                    |           |             |           |              |           |              |
|     |     | Lauf 1:                   | 00:05.195                  | 00:02.850          | 00:29.527 | 94,54 km/h  | 00:54.087 | 88,79 km/h   | 01:31.659 | 79,73 km/h   |
|     |     | Lauf 2:                   | 00:04.896                  | 00:02.819          | 00:28.976 | 95,94 km/h  | 00:52.945 | 88,86 km/h   | 01:29.636 | 81,53 km/h   |
|     |     | Lauf 3:                   | 00:04.954                  | 00:02.802          | 00:28.669 | 94,16 km/h  | 00:52.480 | 86,12 km/h   | 01:28.905 | 82,20 km/h   |
|     |     | Lauf 4:                   | 00:04.907                  | 00:02.785          | 00:28.317 | 96,92 km/h  | 00:59.866 | 77,61 km/h   | 01:35.875 | 76,22 km/h   |
| 8   | 17  | <b>STIEREN Max</b>        | Alfa Romeo Alfetta GTV 2.0 |                    |           |             |           |              |           |              |
|     |     | Lauf 1:                   | 00:04.661                  | 00:02.381          | 00:29.185 | 107,21 km/h | 00:58.050 | 90,72 km/h   | 01:34.277 | 77,52 km/h   |
|     |     | Lauf 2:                   | 00:04.244                  | 00:02.343          | 00:27.404 | 108,32 km/h | 00:55.902 | 95,27 km/h   | 01:29.893 | 81,30 km/h   |
|     |     | Lauf 3:                   | 00:04.167                  | 00:02.359          | 00:28.326 | 107,80 km/h | 00:56.086 | 92,60 km/h   | 01:30.938 | 80,36 km/h   |
|     |     | Lauf 4:                   | 00:04.181                  | 00:02.358          | 00:27.810 | 108,54 km/h | 00:56.085 | 95,90 km/h   | 01:30.434 | 80,81 km/h   |
| 9   | 12  | <b>SCHMELZER Klaus</b>    | Ford Capri I               |                    |           |             |           |              |           |              |
|     |     | Lauf 1:                   | 00:04.513                  | 00:02.373          | 00:30.904 | 107,15 km/h | 01:01.616 | 92,70 km/h   | 01:39.406 | 73,52 km/h   |
|     |     | Lauf 2:                   | 00:04.511                  | 00:02.404          | 00:29.421 | 107,64 km/h | 00:58.693 | 96,94 km/h   | 01:35.029 | 76,90 km/h   |
|     |     | Lauf 3:                   | 00:04.392                  | 00:02.386          | 00:29.388 | 107,50 km/h | 01:00.119 | 93,09 km/h   | 01:36.285 | 75,90 km/h   |
|     |     | Lauf 4:                   | 00:04.303                  | 00:02.337          | 00:28.779 | 107,62 km/h | 01:00.235 | 96,58 km/h   | 01:35.654 | 76,40 km/h   |
| 10  | 18  | <b>KÖSTER Christoph</b>   | Glas 1700 GT               |                    |           |             |           |              |           |              |
|     |     | Lauf 1:                   | 00:05.036                  | 00:03.048          | 00:36.223 | 86,99 km/h  | 01:11.866 | 80,42 km/h   | 01:56.173 | 62,91 km/h   |
|     |     | Lauf 2:                   | 00:05.076                  | 00:02.818          | 00:31.309 | 96,38 km/h  | 01:04.372 | 83,26 km/h   | 01:43.575 | 70,56 km/h   |
|     |     | Lauf 3:                   | *                          | *                  | *         | * km/h      | *         | * km/h       | *         | * km/h       |
|     |     | Lauf 4:                   | 00:05.012                  | 00:02.932          | 00:32.103 | 98,72 km/h  | 01:06.508 | 65,18 km/h   | 01:46.555 | 68,58 km/h   |