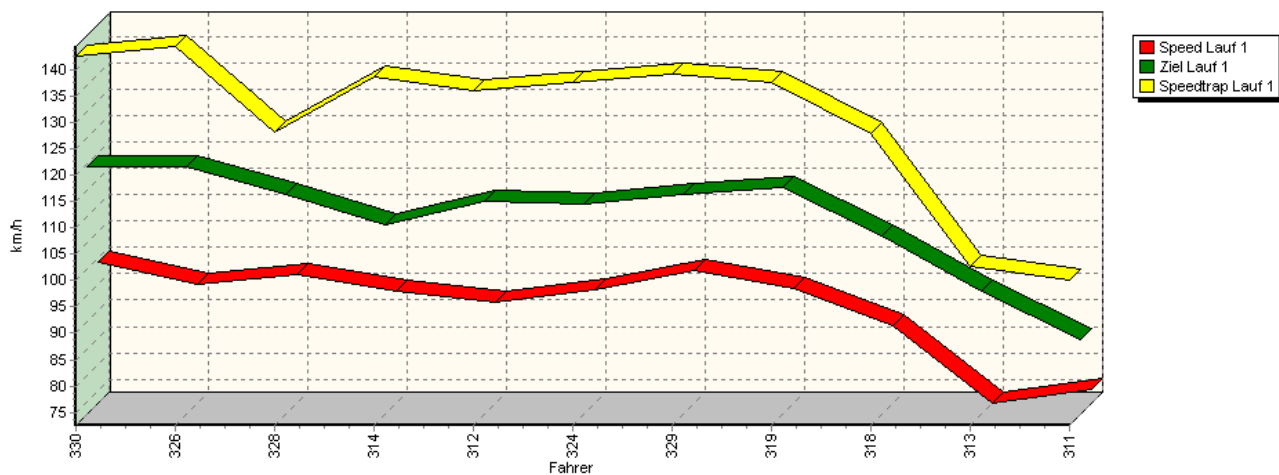
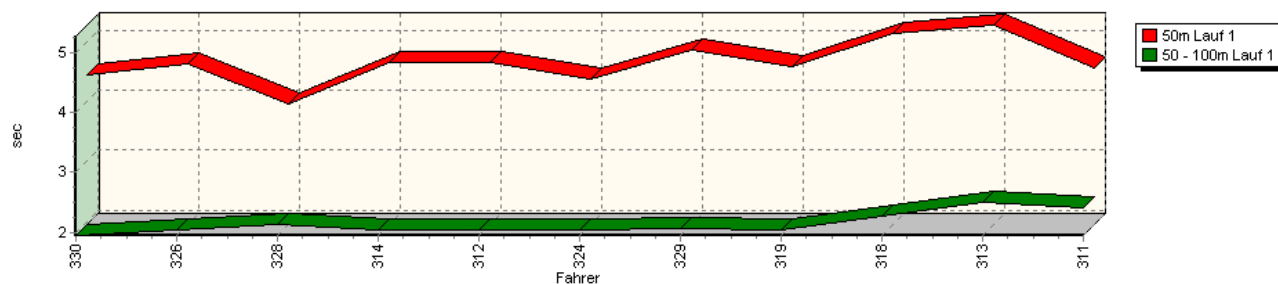


## Sektorzeiten & Speeds - Rennen - Gruppe H bis 1600 ccm - Klasse 39

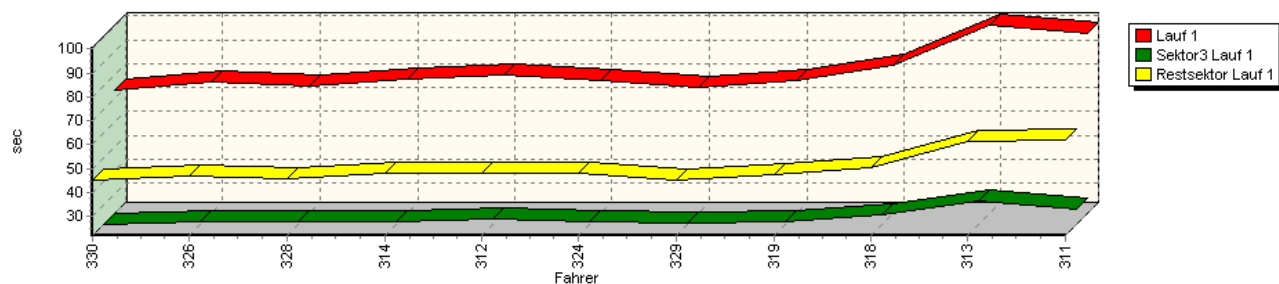
Speed-Diagramm Lauf 1



Sektor-Diagramm (Start) Lauf 1

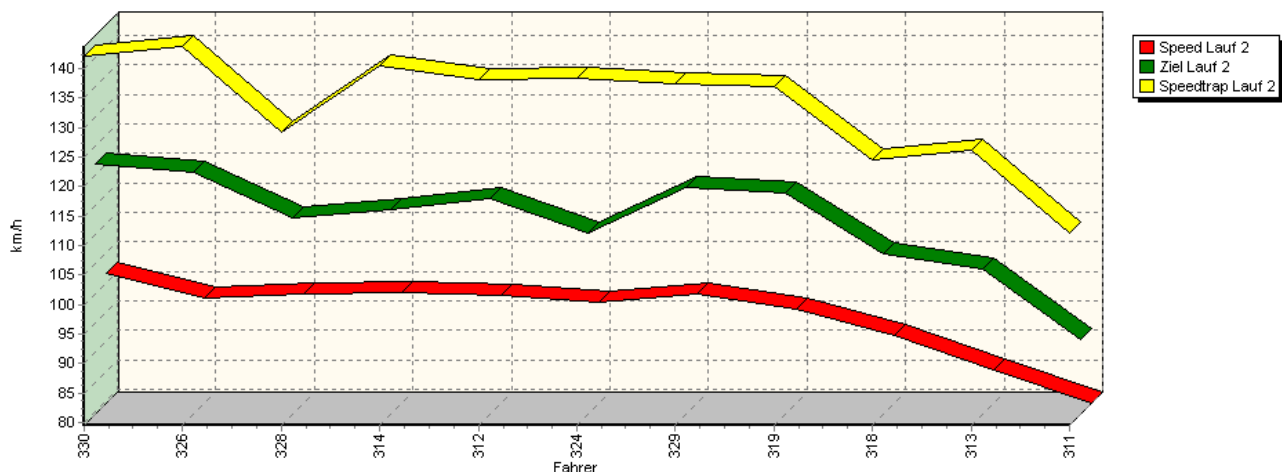


Sektor-Diagramm (Rest) Lauf 1

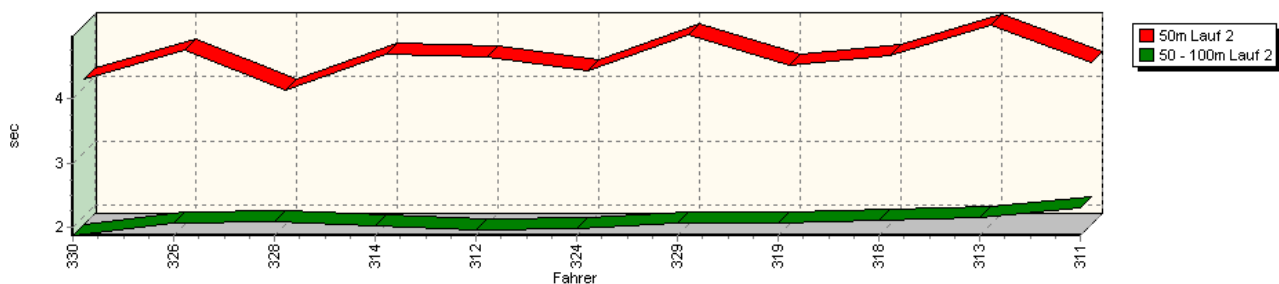


## Sektorzeiten & Speeds - Rennen - Gruppe H bis 1600 ccm - Klasse 39

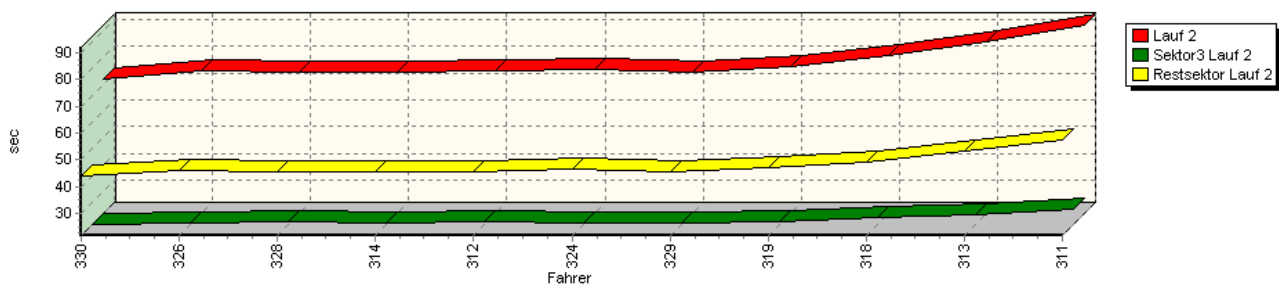
Speed-Diagramm Lauf 2



Sektor-Diagramm (Start) Lauf 2

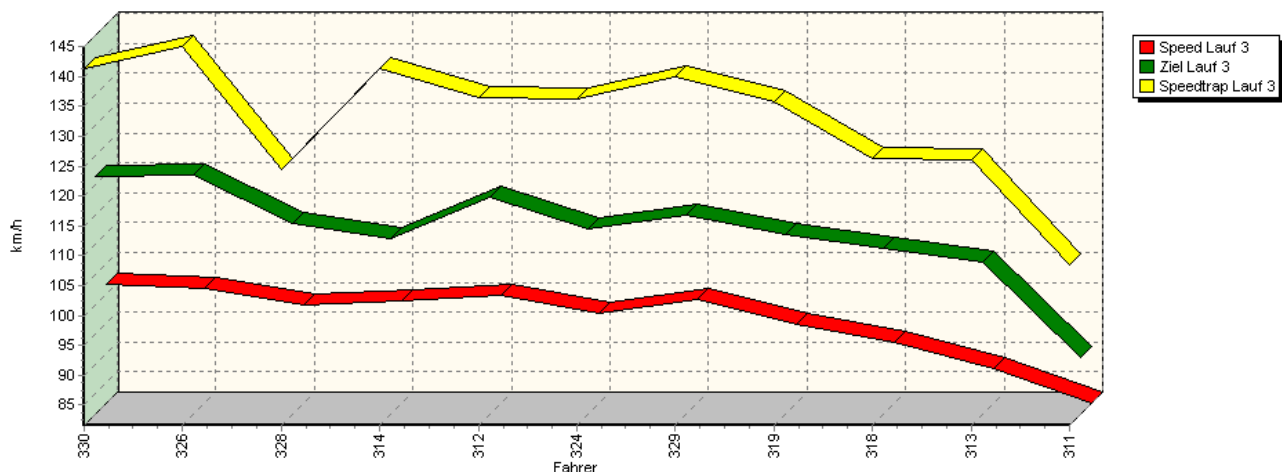


Sektor-Diagramm (Rest) Lauf 2

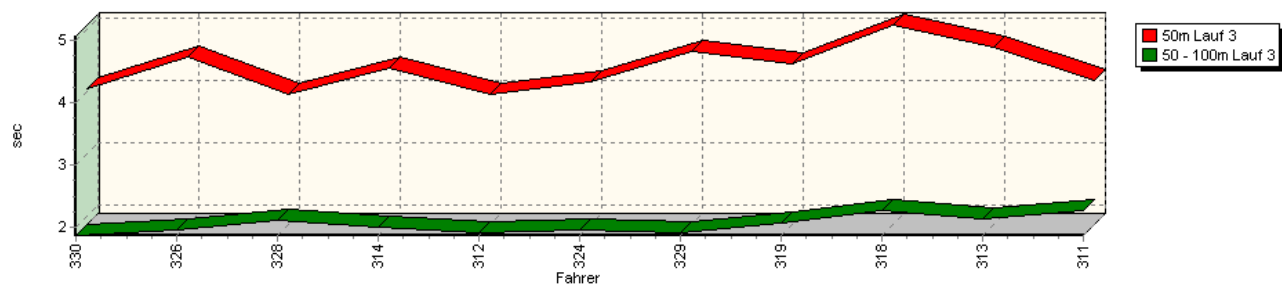


## Sektorzeiten & Speeds - Rennen - Gruppe H bis 1600 ccm - Klasse 39

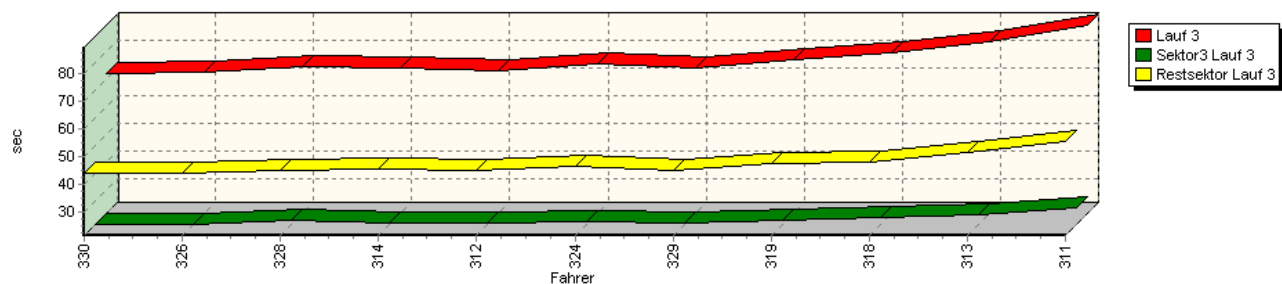
Speed-Diagramm Lauf 3



Sektor-Diagramm (Start) Lauf 3

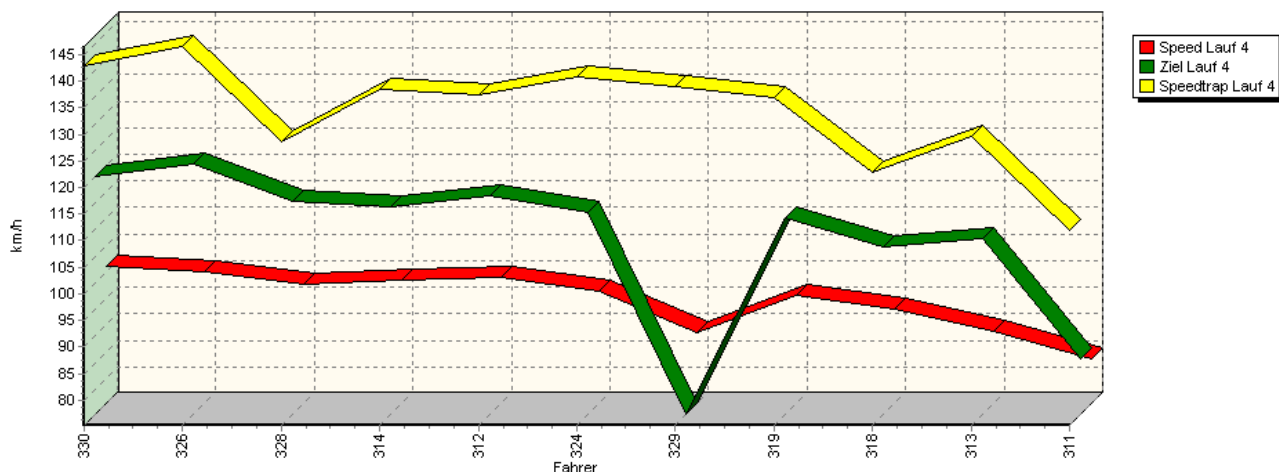


Sektor-Diagramm (Rest) Lauf 3

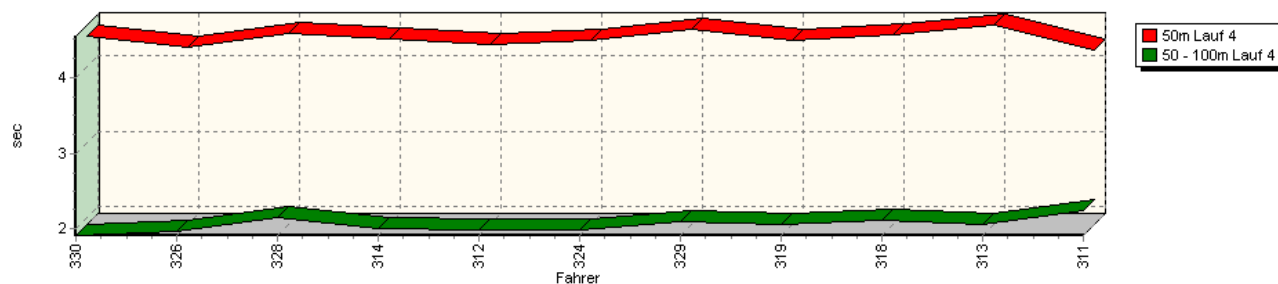


## Sektorzeiten & Speeds - Rennen - Gruppe H bis 1600 ccm - Klasse 39

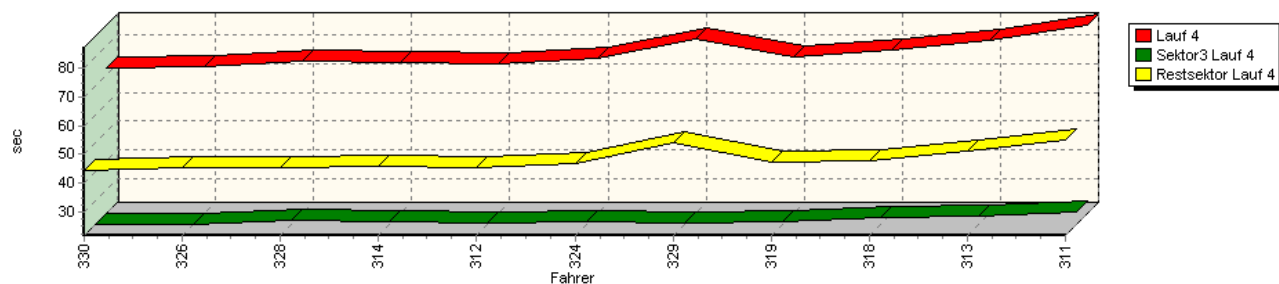
Speed-Diagramm Lauf 4



Sektor-Diagramm (Start) Lauf 4



Sektor-Diagramm (Rest) Lauf 4



Rg.	Nr.	Sektor 1 (50m)	Sektor 2 (50-100m)	Sektor 3	Speed Trap	Sektor 4	Speed (Ziel)	Laufzeit	Speed (Lauf)	
1	330	<b>MAIER Helmut</b>		VW Spiess Golf						
		Lauf 1:	00:04.432	00:01.946	00:22.071	142,66 km/h	00:45.134	119,57 km/h	01:13.583	99,32 km/h
		Lauf 2:	00:04.119	00:01.879	00:21.835	142,12 km/h	00:44.118	121,91 km/h	01:11.951	101,57 km/h
		Lauf 3:	00:04.059	00:01.873	00:21.762	141,46 km/h	00:44.217	121,44 km/h	01:11.911	101,63 km/h
		Lauf 4:	00:04.405	00:01.905	00:21.736	142,92 km/h	00:44.326	120,11 km/h	01:12.372	100,98 km/h



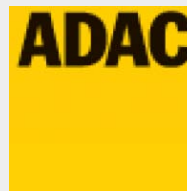
## 44. Osnabrücker ADAC Bergrennen

13. und 14. August 2011

Deutsche Bergmeisterschaft 2011

DMSB Bergpokal für Tourenwagen und Rennsportfahrzeuge

DMSB Classic-Berg-Pokal - KW Gruppe H Berg-Cup



### Sektorzeiten & Speeds - Rennen - Gruppe H bis 1600 ccm - Klasse 39

Rg.	Nr.		Sektor 1 (50m)	Sektor 2 (50-100m)	Sektor 3	Speed Trap	Sektor 4	Speed (Ziel)	Laufzeit	Speed (Lauf)
2	326	<b>PAULITSCH Hans</b>	VW Minichberger Scirocco 16V							
		Lauf 1:	00:04.627	00:02.047	00:23.242	144,40 km/h	00:46.878	119,44 km/h	01:16.794	95,16 km/h
		Lauf 2:	00:04.583	00:02.080	00:22.239	143,71 km/h	00:46.225	120,52 km/h	01:15.127	97,28 km/h
		Lauf 3:	00:04.566	00:01.964	00:21.671	145,06 km/h	00:44.301	121,62 km/h	01:12.502	100,80 km/h
		Lauf 4:	00:04.262	00:01.964	00:21.627	146,54 km/h	00:45.243	122,25 km/h	01:13.096	99,98 km/h
3	328	<b>FAULHABER Stefan</b>	Opel Risse Kadett C 8V							
		Lauf 1:	00:03.962	00:02.133	00:23.485	128,06 km/h	00:45.818	114,29 km/h	01:15.398	96,93 km/h
		Lauf 2:	00:03.954	00:02.102	00:23.015	129,28 km/h	00:45.431	112,71 km/h	01:14.502	98,09 km/h
		Lauf 3:	00:03.951	00:02.124	00:23.284	124,50 km/h	00:45.111	113,46 km/h	01:14.470	98,13 km/h
		Lauf 4:	00:04.440	00:02.145	00:23.089	128,59 km/h	00:45.143	115,42 km/h	01:14.817	97,68 km/h
4	314	<b>LEWE Manfred</b>	VW Brügge Golf 20V							
		Lauf 1:	00:04.643	00:02.039	00:23.371	138,68 km/h	00:47.820	108,48 km/h	01:17.873	93,84 km/h
		Lauf 2:	00:04.503	00:02.027	00:22.396	140,33 km/h	00:45.407	114,30 km/h	01:14.333	98,31 km/h
		Lauf 3:	00:04.381	00:02.008	00:22.120	141,29 km/h	00:45.569	111,06 km/h	01:14.078	98,65 km/h
		Lauf 4:	00:04.368	00:02.002	00:22.373	138,46 km/h	00:45.581	114,36 km/h	01:14.324	98,33 km/h
5	312	<b>KLINGELBERGER Thomas</b>	VW Polo Kit Car							
		Lauf 1:	00:04.632	00:02.047	00:24.573	136,00 km/h	00:48.356	112,94 km/h	01:19.608	91,80 km/h
		Lauf 2:	00:04.466	00:01.974	00:22.781	138,07 km/h	00:45.481	115,96 km/h	01:14.702	97,83 km/h
		Lauf 3:	00:03.961	00:01.927	00:22.270	136,51 km/h	00:45.084	117,99 km/h	01:13.242	99,78 km/h
		Lauf 4:	00:04.300	00:01.985	00:22.274	137,39 km/h	00:45.239	116,45 km/h	01:13.798	99,03 km/h
6	324	<b>EBERLE Jörg</b>	VW Scirocco							
		Lauf 1:	00:04.370	00:02.036	00:23.350	137,55 km/h	00:47.956	112,43 km/h	01:17.712	94,04 km/h
		Lauf 2:	00:04.243	00:01.988	00:22.528	138,36 km/h	00:46.789	110,23 km/h	01:15.548	96,73 km/h
		Lauf 3:	00:04.160	00:01.967	00:22.681	136,24 km/h	00:46.721	112,67 km/h	01:15.529	96,76 km/h
		Lauf 4:	00:04.355	00:01.976	00:22.608	140,72 km/h	00:46.993	113,17 km/h	01:15.932	96,24 km/h
7	329	<b>AUCHTER Tobias</b>	Opel Corsa A GSI 16V							
		Lauf 1:	00:04.842	00:02.054	00:22.472	139,27 km/h	00:45.435	114,25 km/h	01:14.803	97,70 km/h
		Lauf 2:	00:04.801	00:02.064	00:22.307	137,38 km/h	00:45.333	117,90 km/h	01:14.505	98,09 km/h
		Lauf 3:	00:04.648	00:01.923	00:21.926	139,99 km/h	00:45.339	114,87 km/h	01:13.836	98,98 km/h
		Lauf 4:	00:04.494	00:02.093	00:21.881	138,95 km/h	00:54.061	75,28 km/h	01:22.529	88,55 km/h
8	319	<b>HEINDRICHS Werner</b>	Opel Veytal Corsa 16V							
		Lauf 1:	00:04.569	00:02.041	00:23.341	137,62 km/h	00:47.504	115,57 km/h	01:17.455	94,35 km/h
		Lauf 2:	00:04.342	00:02.078	00:22.995	137,02 km/h	00:47.062	116,90 km/h	01:16.477	95,56 km/h
		Lauf 3:	00:04.443	00:02.082	00:23.150	135,80 km/h	00:47.386	111,82 km/h	01:17.061	94,83 km/h
		Lauf 4:	00:04.350	00:02.052	00:22.718	137,02 km/h	00:47.356	112,25 km/h	01:16.476	95,56 km/h
9	318	<b>NOWACZYK Uwe</b>	VW Misczyk Golf I 8V							
		Lauf 1:	00:05.121	00:02.277	00:25.965	127,97 km/h	00:50.356	106,44 km/h	01:23.719	87,29 km/h
		Lauf 2:	00:04.494	00:02.121	00:24.436	124,45 km/h	00:49.341	106,58 km/h	01:20.392	90,91 km/h
		Lauf 3:	00:05.072	00:02.268	00:23.975	126,26 km/h	00:48.366	109,50 km/h	01:19.681	91,72 km/h
		Lauf 4:	00:04.424	00:02.107	00:24.083	122,81 km/h	00:47.917	106,71 km/h	01:18.531	93,06 km/h
10	313	<b>SCHEELE Marcel</b>	Honda Civic							
		Lauf 1:	00:05.266	00:02.510	00:31.612	102,63 km/h	01:01.323	95,77 km/h	01:40.711	72,56 km/h
		Lauf 2:	00:04.958	00:02.167	00:25.621	126,10 km/h	00:53.023	104,08 km/h	01:25.769	85,21 km/h
		Lauf 3:	00:04.721	00:02.134	00:25.315	125,97 km/h	00:51.395	107,03 km/h	01:23.565	87,45 km/h
		Lauf 4:	00:04.556	00:02.047	00:24.452	129,62 km/h	00:51.225	108,23 km/h	01:22.280	88,82 km/h



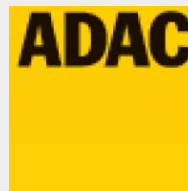
## 44. Osnabrücker ADAC Bergrennen

13. und 14. August 2011

Deutsche Bergmeisterschaft 2011

DMSB Bergpokal für Tourenwagen und Rennsportfahrzeuge

DMSB Classic-Berg-Pokal - KW Gruppe H Berg-Cup



### Sektorzeiten & Speeds - Rennen - Gruppe H bis 1600 ccm - Klasse 39

Rg.	Nr.		Sektor 1 (50m)	Sektor 2 (50-100m)	Sektor 3	Speed Trap	Sektor 4	Speed (Ziel)	Laufzeit	Speed (Lauf)
11	311	<b>HOLZ Harry</b>		Fiat X 1/9						
		Lauf 1:	00:04.547	00:02.399	00:28.612	100,07 km/h	01:01.701	86,62 km/h	01:37.259	75,14 km/h
		Lauf 2:	00:04.389	00:02.309	00:27.707	112,14 km/h	00:57.493	92,14 km/h	01:31.898	79,52 km/h
		Lauf 3:	00:04.175	00:02.275	00:27.530	108,48 km/h	00:55.552	91,18 km/h	01:29.532	81,62 km/h
		Lauf 4:	00:04.217	00:02.234	00:26.074	112,00 km/h	00:54.848	85,75 km/h	01:27.373	83,64 km/h