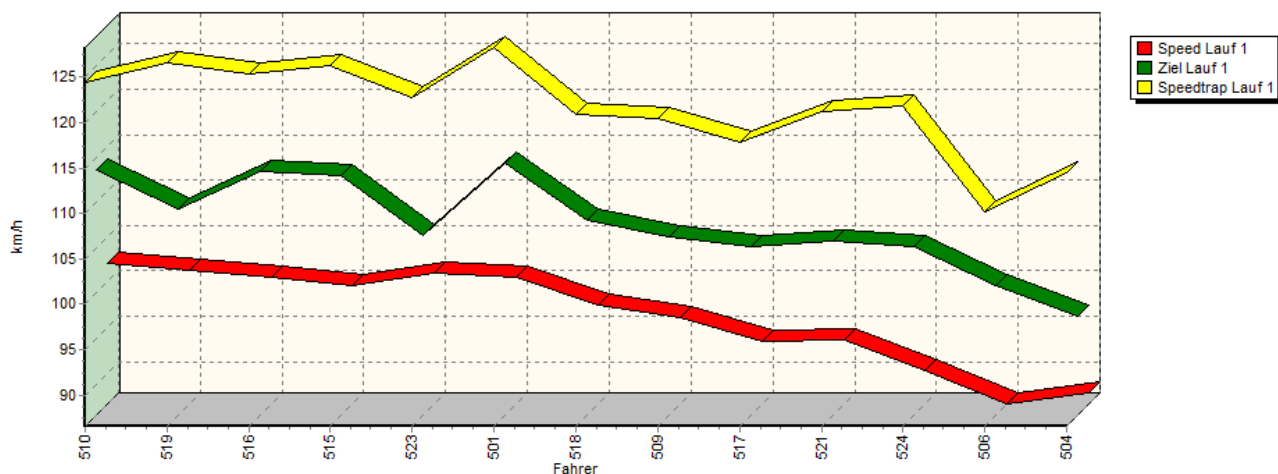
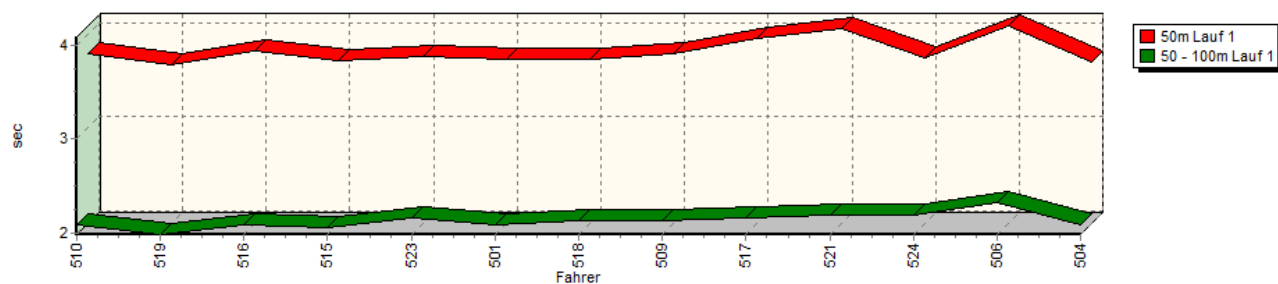


Sektorzeiten & Speeds - Rennen - NSU Bergpokal

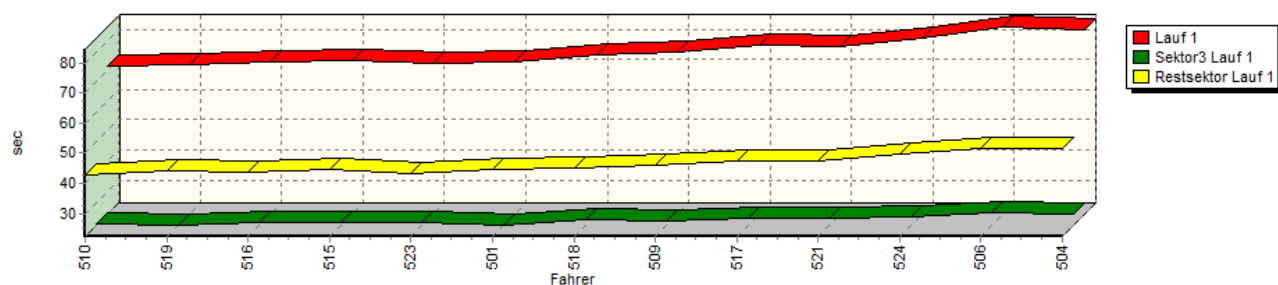
Speed-Diagramm Lauf 1



Sektor-Diagramm (Start) Lauf 1

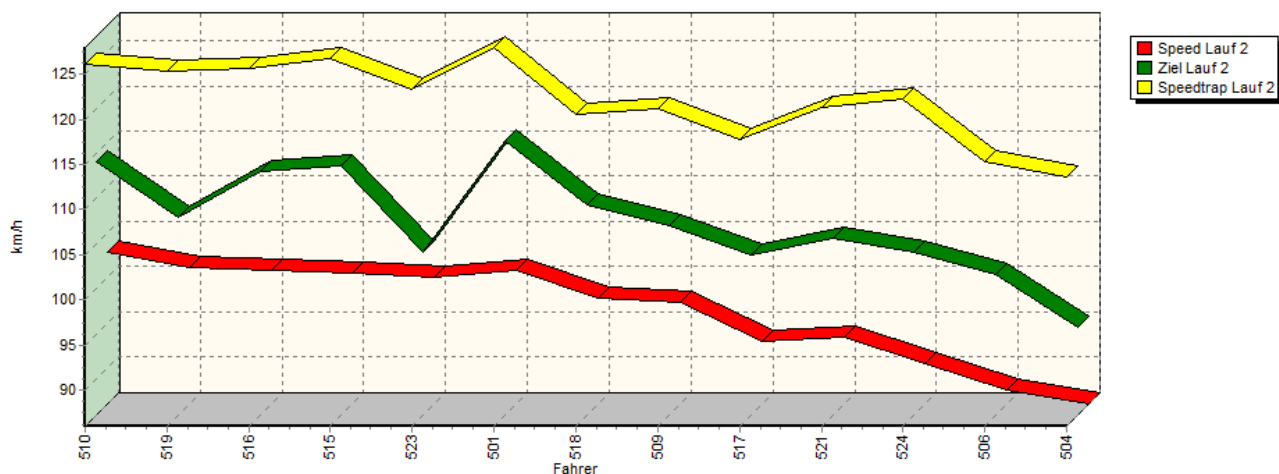


Sektor-Diagramm (Rest) Lauf 1

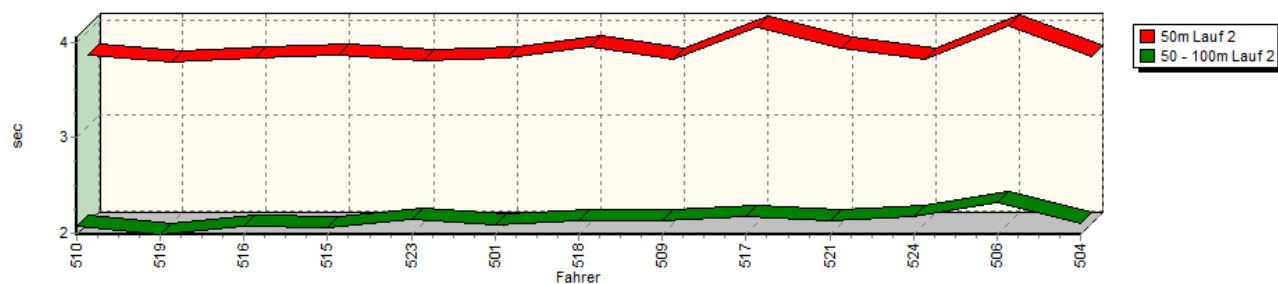


Sektorzeiten & Speeds - Rennen - NSU Bergpokal

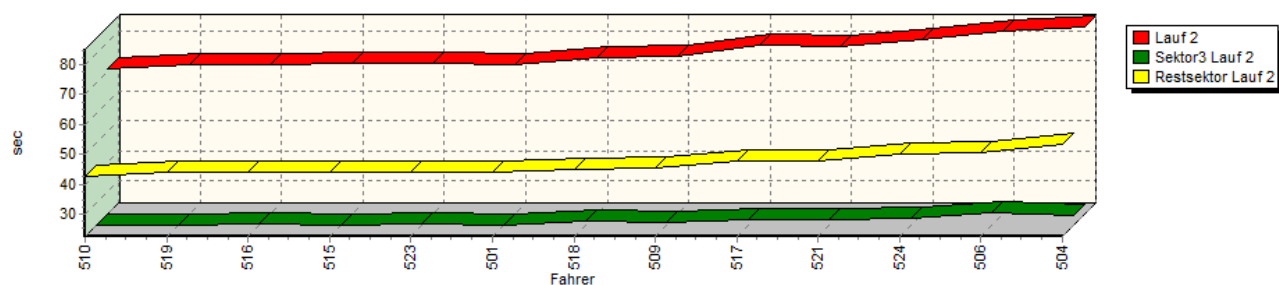
Speed-Diagramm Lauf 2



Sektor-Diagramm (Start) Lauf 2

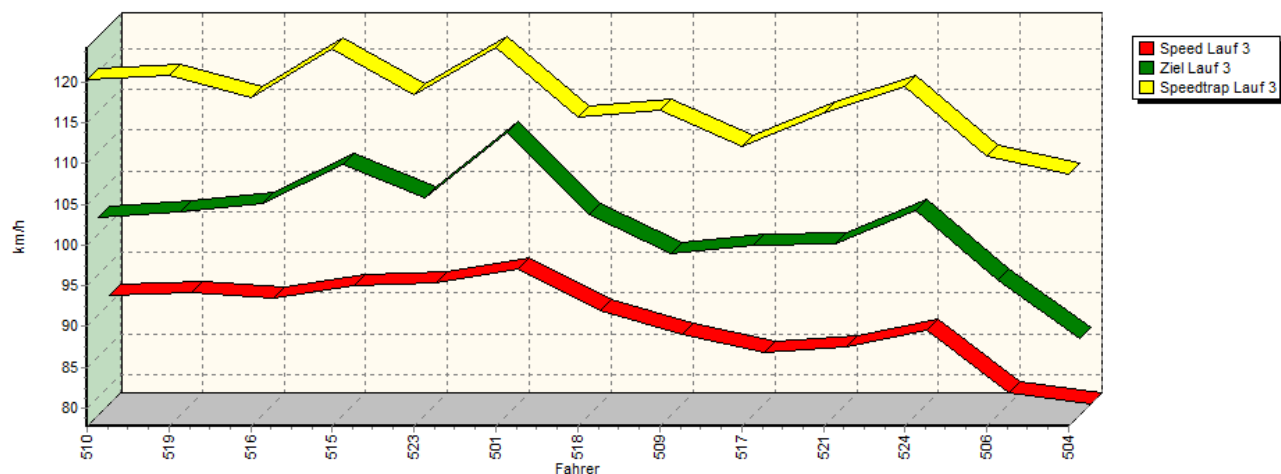


Sektor-Diagramm (Rest) Lauf 2

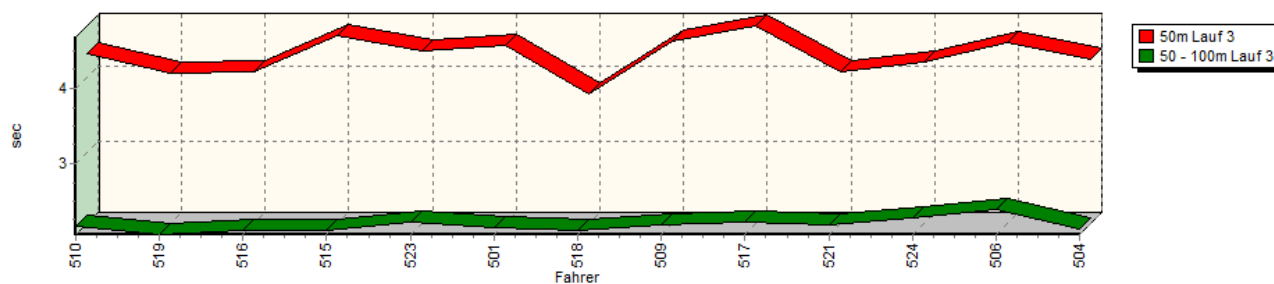


Sektorzeiten & Speeds - Rennen - NSU Bergpokal

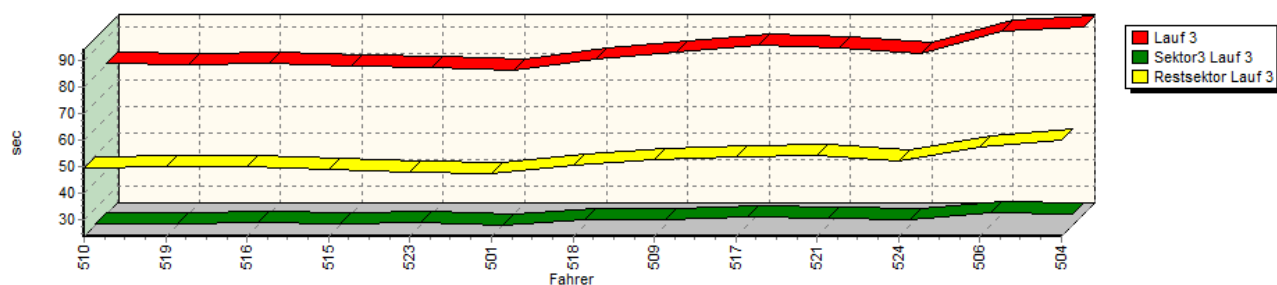
Speed-Diagramm Lauf 3



Sektor-Diagramm (Start) Lauf 3

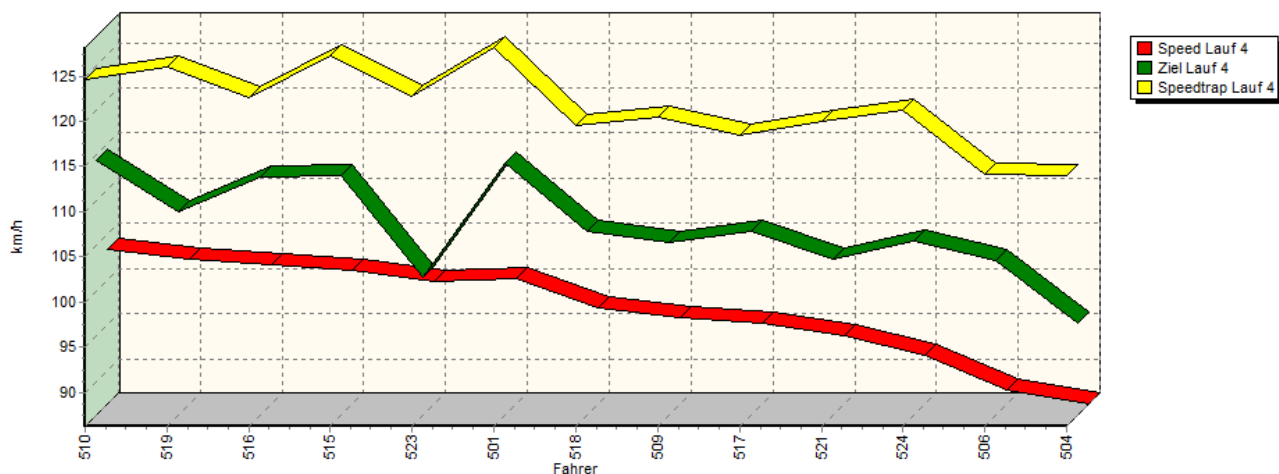


Sektor-Diagramm (Rest) Lauf 3

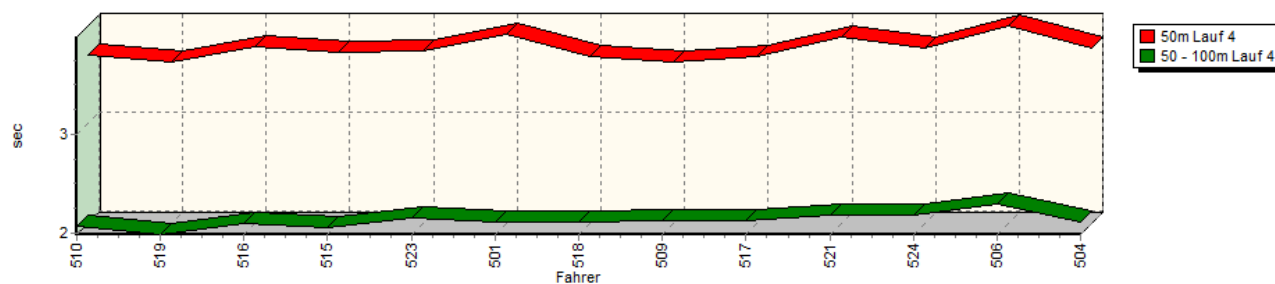


Sektorzeiten & Speeds - Rennen - NSU Bergpokal

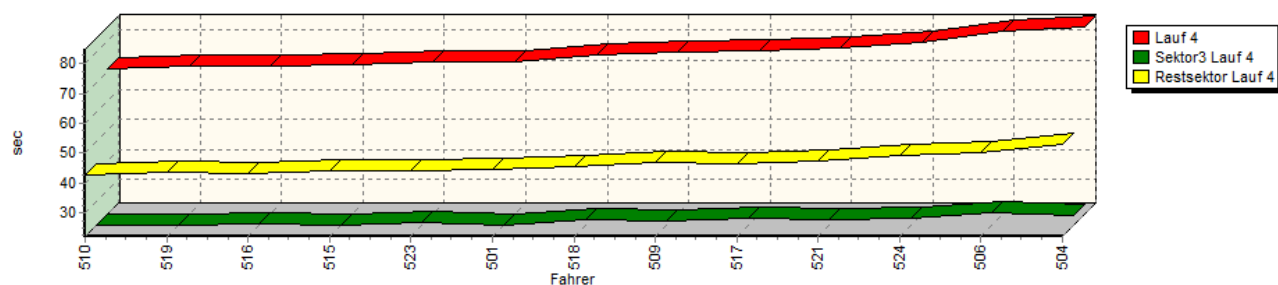
Speed-Diagramm Lauf 4



Sektor-Diagramm (Start) Lauf 4



Sektor-Diagramm (Rest) Lauf 4



| Rg. | Nr. | Sektor 1 (50m) | Sektor 2 (50-100m) | Sektor 3 | Speed Trap | Sektor 4 | Speed (Ziel) | Laufzeit | Speed (Lauf) | |
|-----|-----|------------------------|--------------------|-----------|------------|-------------|--------------|-------------|--------------|-------------|
| 1 | 510 | HOFMANN Steffen | | NSU TT | | | | | | |
| | | Lauf 1: | 00:03.790 | 00:02.082 | 00:22.944 | 124,40 km/h | 00:42.817 | 113,53 km/h | 01:11.633 | 102,02 km/h |
| | | Lauf 2: | 00:03.754 | 00:02.074 | 00:22.585 | 126,12 km/h | 00:42.620 | 114,13 km/h | 01:11.033 | 102,88 km/h |
| | | Lauf 3: | 00:04.311 | 00:02.169 | 00:24.206 | 120,37 km/h | 00:49.557 | 102,07 km/h | 01:20.243 | 91,07 km/h |
| | | Lauf 4: | 00:03.689 | 00:02.060 | 00:22.409 | 124,67 km/h | 00:42.539 | 114,43 km/h | 01:10.697 | 103,37 km/h |

Sektorzeiten & Speeds - Rennen - NSU Bergpokal

| Rg. | Nr. | | Sektor 1 (50m) | Sektor 2 (50-100m) | Sektor 3 | Speed Trap | Sektor 4 | Speed (Ziel) | Laufzeit | Speed (Lauf) |
|-----|-----|-------------------------|--------------------|--------------------|-----------|-------------|-----------|--------------|-----------|--------------|
| 2 | 519 | DAVIDOVIC Jörg | NSU TT | | | | | | | |
| | | Lauf 1: | 00:03.681 | 00:01.982 | 00:22.482 | 126,66 km/h | 00:43.959 | 109,31 km/h | 01:12.104 | 101,35 km/h |
| | | Lauf 2: | 00:03.674 | 00:01.984 | 00:22.743 | 125,43 km/h | 00:43.891 | 107,86 km/h | 01:12.292 | 101,09 km/h |
| | | Lauf 3: | 00:04.044 | 00:02.059 | 00:24.087 | 120,85 km/h | 00:49.693 | 102,67 km/h | 01:19.883 | 91,48 km/h |
| | | Lauf 4: | 00:03.620 | 00:01.979 | 00:22.256 | 125,94 km/h | 00:43.637 | 108,73 km/h | 01:11.492 | 102,22 km/h |
| 3 | 516 | HÖBER Jörg | NSU TT Einfalt RS | | | | | | | |
| | | Lauf 1: | 00:03.824 | 00:02.083 | 00:23.227 | 125,41 km/h | 00:43.588 | 113,43 km/h | 01:12.722 | 100,49 km/h |
| | | Lauf 2: | 00:03.719 | 00:02.072 | 00:22.867 | 125,59 km/h | 00:43.811 | 113,01 km/h | 01:12.469 | 100,84 km/h |
| | | Lauf 3: | 00:04.064 | 00:02.122 | 00:24.734 | 118,09 km/h | 00:49.633 | 103,74 km/h | 01:20.553 | 90,72 km/h |
| | | Lauf 4: | 00:03.776 | 00:02.097 | 00:22.925 | 122,69 km/h | 00:43.044 | 112,55 km/h | 01:11.842 | 101,72 km/h |
| 4 | 515 | SCHINDLER Uwe | NSU KWR | | | | | | | |
| | | Lauf 1: | 00:03.713 | 00:02.054 | 00:23.170 | 126,32 km/h | 00:44.382 | 112,92 km/h | 01:13.319 | 99,67 km/h |
| | | Lauf 2: | 00:03.749 | 00:02.058 | 00:22.760 | 126,73 km/h | 00:44.195 | 113,55 km/h | 01:12.762 | 100,44 km/h |
| | | Lauf 3: | 00:04.538 | 00:02.120 | 00:23.951 | 124,00 km/h | 00:48.602 | 108,47 km/h | 01:19.211 | 92,26 km/h |
| | | Lauf 4: | 00:03.722 | 00:02.049 | 00:22.470 | 127,20 km/h | 00:44.029 | 112,72 km/h | 01:12.270 | 101,12 km/h |
| 5 | 523 | KLEINEBERG Frank | NSU TT | | | | | | | |
| | | Lauf 1: | 00:03.759 | 00:02.154 | 00:23.245 | 122,82 km/h | 00:43.237 | 106,33 km/h | 01:12.395 | 100,95 km/h |
| | | Lauf 2: | 00:03.698 | 00:02.147 | 00:23.179 | 123,29 km/h | 00:44.050 | 104,08 km/h | 01:13.074 | 100,01 km/h |
| | | Lauf 3: | 00:04.342 | 00:02.220 | 00:24.777 | 118,38 km/h | 00:47.541 | 104,50 km/h | 01:18.880 | 92,65 km/h |
| | | Lauf 4: | 00:03.729 | 00:02.152 | 00:23.036 | 122,75 km/h | 00:44.281 | 101,56 km/h | 01:13.198 | 99,84 km/h |
| 6 | 501 | STEINERT Karsten | NSU TT | | | | | | | |
| | | Lauf 1: | 00:03.731 | 00:02.085 | 00:22.382 | 128,29 km/h | 00:44.515 | 114,30 km/h | 01:12.713 | 100,51 km/h |
| | | Lauf 2: | 00:03.715 | 00:02.092 | 00:22.626 | 127,98 km/h | 00:44.016 | 116,43 km/h | 01:12.449 | 100,87 km/h |
| | | Lauf 3: | 00:04.421 | 00:02.150 | 00:23.628 | 124,23 km/h | 00:47.234 | 112,38 km/h | 01:17.433 | 94,38 km/h |
| | | Lauf 4: | 00:03.898 | 00:02.109 | 00:22.328 | 128,16 km/h | 00:44.658 | 114,10 km/h | 01:12.993 | 100,12 km/h |
| 7 | 518 | HÖLLERICH Nicola | NSU TT | | | | | | | |
| | | Lauf 1: | 00:03.740 | 00:02.135 | 00:24.164 | 120,86 km/h | 00:44.951 | 108,07 km/h | 01:14.990 | 97,45 km/h |
| | | Lauf 2: | 00:03.839 | 00:02.123 | 00:24.056 | 120,50 km/h | 00:44.728 | 109,29 km/h | 01:14.746 | 97,77 km/h |
| | | Lauf 3: | 00:03.782 | 00:02.116 | 00:25.835 | 115,68 km/h | 00:50.215 | 102,31 km/h | 01:21.948 | 89,18 km/h |
| | | Lauf 4: | 00:03.679 | 00:02.104 | 00:24.248 | 119,46 km/h | 00:45.366 | 106,58 km/h | 01:15.397 | 96,93 km/h |
| 8 | 509 | MEURER Karlheinz | NSU TT | | | | | | | |
| | | Lauf 1: | 00:03.793 | 00:02.135 | 00:23.998 | 120,43 km/h | 00:46.114 | 106,15 km/h | 01:16.040 | 96,11 km/h |
| | | Lauf 2: | 00:03.699 | 00:02.129 | 00:23.739 | 121,25 km/h | 00:45.552 | 107,01 km/h | 01:15.119 | 97,29 km/h |
| | | Lauf 3: | 00:04.470 | 00:02.192 | 00:25.515 | 116,48 km/h | 00:52.550 | 97,66 km/h | 01:24.727 | 86,25 km/h |
| | | Lauf 4: | 00:03.627 | 00:02.120 | 00:23.736 | 120,46 km/h | 00:46.759 | 105,35 km/h | 01:16.242 | 95,85 km/h |
| 9 | 517 | VOGEL Michael | NSU TT | | | | | | | |
| | | Lauf 1: | 00:03.956 | 00:02.153 | 00:24.549 | 117,88 km/h | 00:47.551 | 105,18 km/h | 01:18.209 | 93,44 km/h |
| | | Lauf 2: | 00:04.047 | 00:02.177 | 00:24.619 | 117,74 km/h | 00:47.849 | 103,79 km/h | 01:18.692 | 92,87 km/h |
| | | Lauf 3: | 00:04.676 | 00:02.229 | 00:26.642 | 112,19 km/h | 00:53.335 | 98,59 km/h | 01:26.882 | 84,11 km/h |
| | | Lauf 4: | 00:03.682 | 00:02.124 | 00:24.355 | 118,41 km/h | 00:46.640 | 106,58 km/h | 01:16.801 | 95,15 km/h |
| 10 | 521 | VOIGT Walter | NSU Spiess TT 1300 | | | | | | | |
| | | Lauf 1: | 00:04.060 | 00:02.187 | 00:24.573 | 121,20 km/h | 00:47.214 | 105,71 km/h | 01:18.034 | 93,65 km/h |
| | | Lauf 2: | 00:03.825 | 00:02.129 | 00:24.534 | 121,28 km/h | 00:47.746 | 105,54 km/h | 01:18.234 | 93,41 km/h |
| | | Lauf 3: | 00:04.074 | 00:02.189 | 00:26.087 | 116,21 km/h | 00:53.904 | 98,86 km/h | 01:26.254 | 84,73 km/h |
| | | Lauf 4: | 00:03.879 | 00:02.170 | 00:24.271 | 119,93 km/h | 00:47.550 | 103,54 km/h | 01:17.870 | 93,85 km/h |

Sektorzeiten & Speeds - Rennen - NSU Bergpokal

| Rg. | Nr. | | Sektor 1 (50m) | Sektor 2 (50-100m) | Sektor 3 | Speed Trap | Sektor 4 | Speed (Ziel) | Laufzeit | Speed (Lauf) |
|-----|-----|--------------------------|------------------|--------------------|-----------|-------------|-----------|--------------|-----------|--------------|
| 11 | 524 | SCHWALBE Wolfgang | NSU TT | | | | | | | |
| | | Lauf 1: | 00:03.751 | 00:02.187 | 00:25.164 | 121,81 km/h | 00:49.853 | 105,17 km/h | 01:20.955 | 90,27 km/h |
| | | Lauf 2: | 00:03.701 | 00:02.178 | 00:24.933 | 122,25 km/h | 00:49.959 | 104,12 km/h | 01:20.771 | 90,48 km/h |
| | | Lauf 3: | 00:04.198 | 00:02.274 | 00:25.671 | 119,42 km/h | 00:51.962 | 102,92 km/h | 01:24.105 | 86,89 km/h |
| | | Lauf 4: | 00:03.756 | 00:02.181 | 00:24.564 | 121,28 km/h | 00:49.292 | 105,52 km/h | 01:19.793 | 91,59 km/h |
| 12 | 506 | SCHABACKER Pit | NSU TT Davidovic | | | | | | | |
| | | Lauf 1: | 00:04.091 | 00:02.324 | 00:26.464 | 110,17 km/h | 00:51.553 | 100,85 km/h | 01:24.432 | 86,55 km/h |
| | | Lauf 2: | 00:04.056 | 00:02.319 | 00:26.641 | 115,36 km/h | 00:50.473 | 101,60 km/h | 01:23.489 | 87,53 km/h |
| | | Lauf 3: | 00:04.455 | 00:02.393 | 00:28.404 | 110,87 km/h | 00:57.031 | 94,28 km/h | 01:32.283 | 79,19 km/h |
| | | Lauf 4: | 00:03.988 | 00:02.292 | 00:26.562 | 114,09 km/h | 00:50.361 | 103,36 km/h | 01:23.203 | 87,83 km/h |
| 13 | 504 | SZOTT Roman | NSU TT | | | | | | | |
| | | Lauf 1: | 00:03.709 | 00:02.085 | 00:26.045 | 114,53 km/h | 00:51.459 | 97,38 km/h | 01:23.298 | 87,73 km/h |
| | | Lauf 2: | 00:03.731 | 00:02.095 | 00:25.939 | 113,58 km/h | 00:53.212 | 95,72 km/h | 01:24.977 | 86,00 km/h |
| | | Lauf 3: | 00:04.240 | 00:02.128 | 00:27.637 | 108,72 km/h | 00:59.957 | 87,13 km/h | 01:33.962 | 77,78 km/h |
| | | Lauf 4: | 00:03.764 | 00:02.105 | 00:25.715 | 113,95 km/h | 00:53.136 | 96,36 km/h | 01:24.720 | 86,26 km/h |