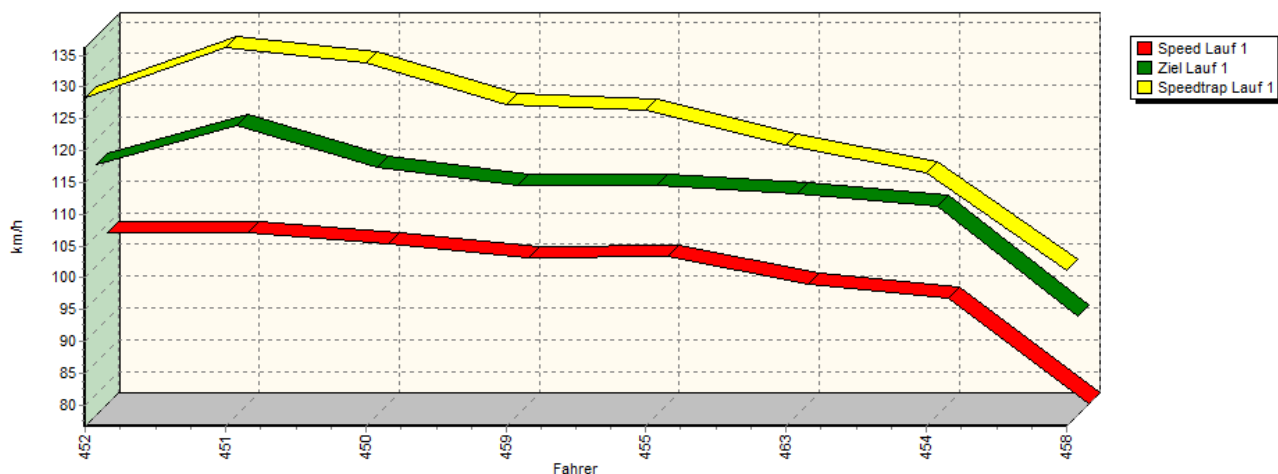
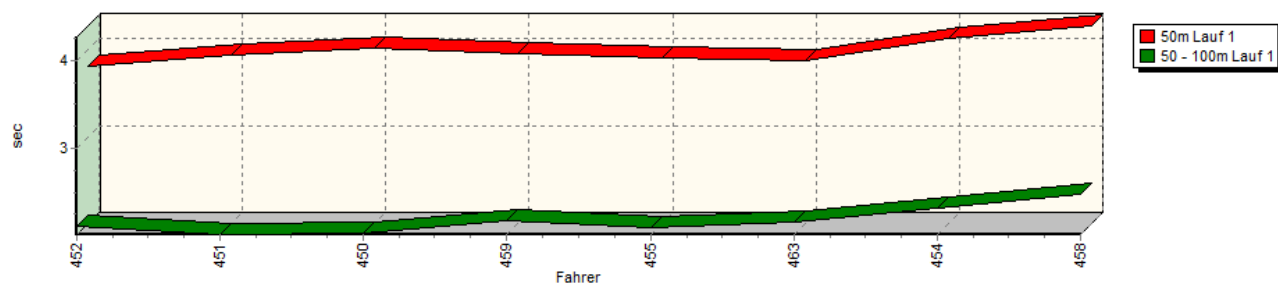


Sektorzeiten & Speeds - Rennen - Gruppe H (DMSB) bis 1150 ccm - Klasse 33

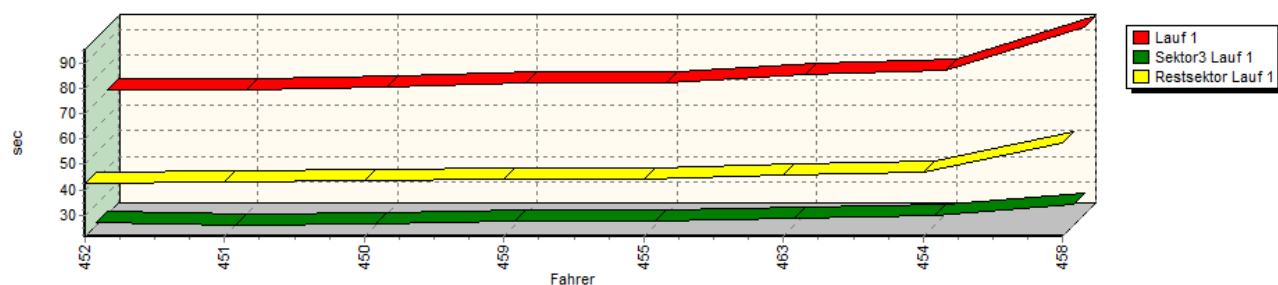
Speed-Diagramm Lauf 1



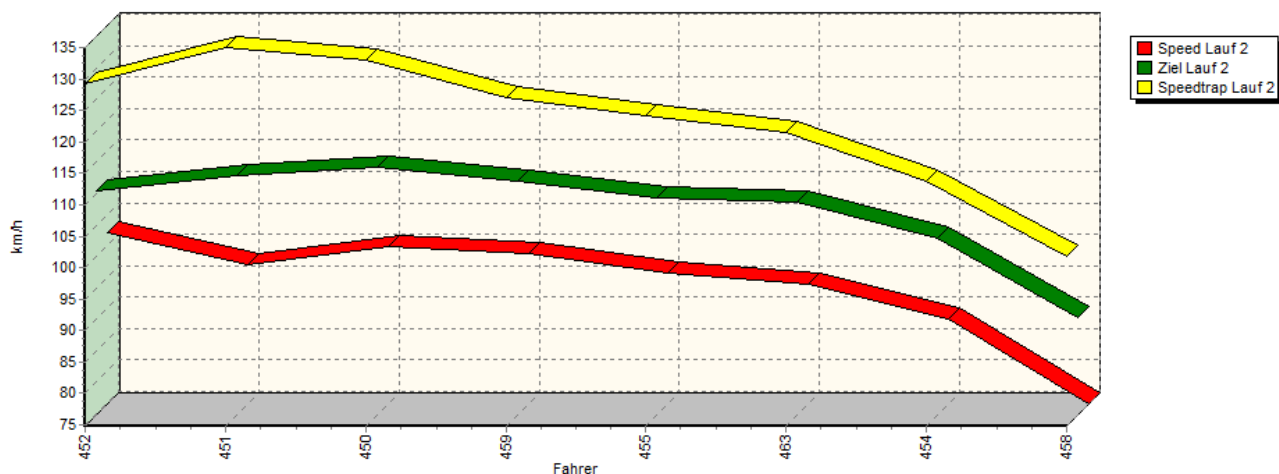
Sektor-Diagramm (Start) Lauf 1



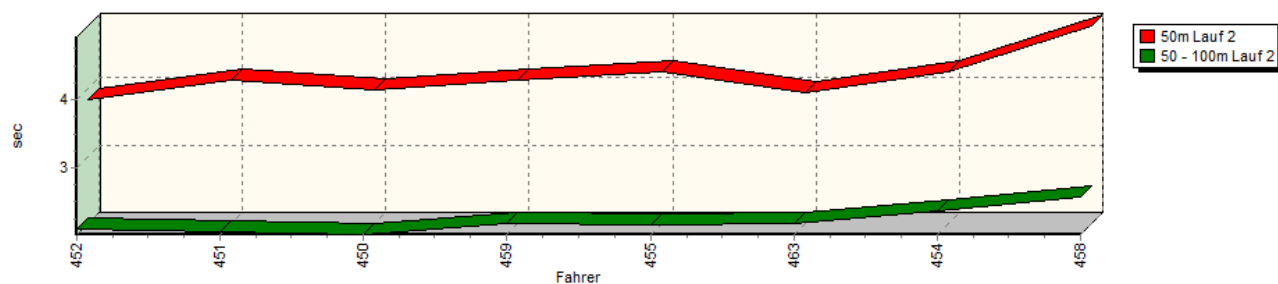
Sektor-Diagramm (Rest) Lauf 1



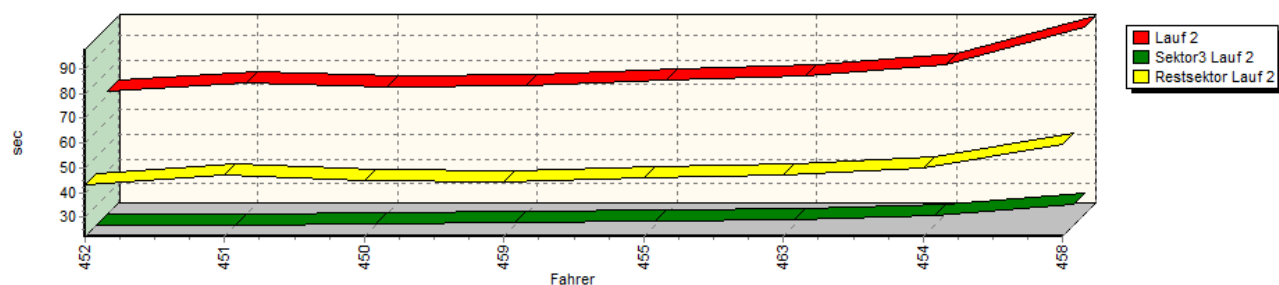
Sektorzeiten & Speeds - Rennen - Gruppe H (DMSB) bis 1150 ccm - Klasse 33 Speed-Diagramm Lauf 2



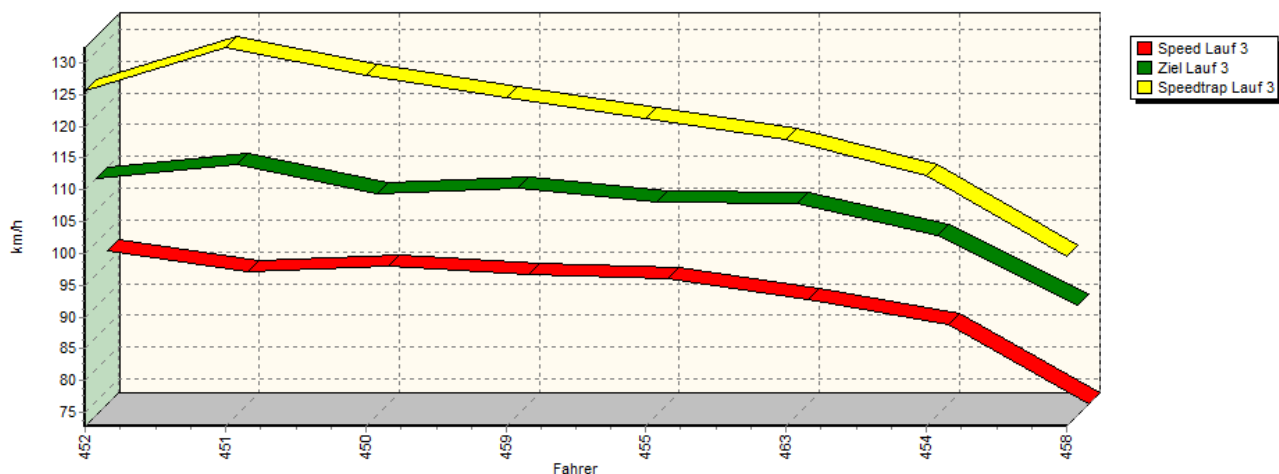
Sektor-Diagramm (Start) Lauf 2



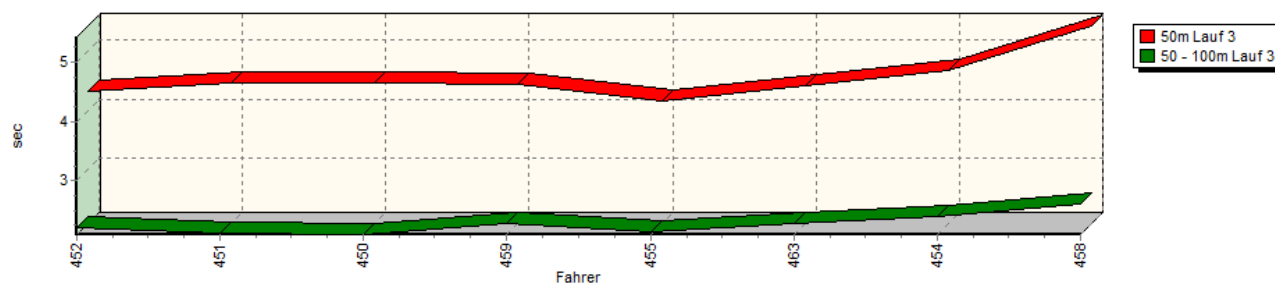
Sektor-Diagramm (Rest) Lauf 2



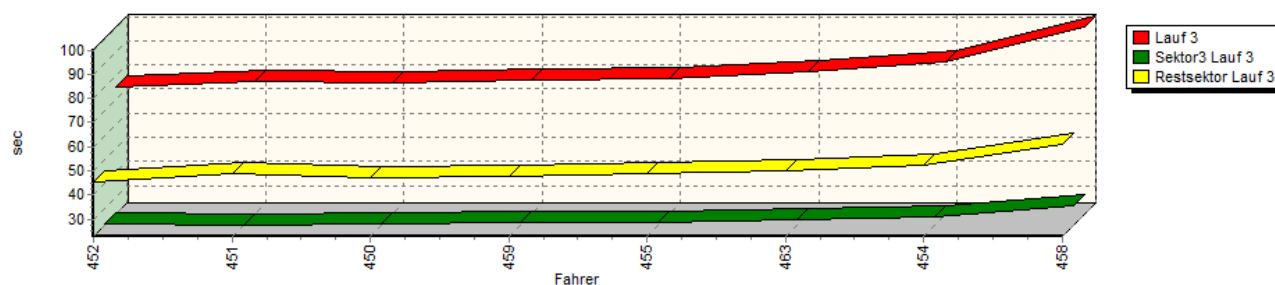
Sektorzeiten & Speeds - Rennen - Gruppe H (DMSB) bis 1150 ccm - Klasse 33
Speed-Diagramm Lauf 3



Sektor-Diagramm (Start) Lauf 3

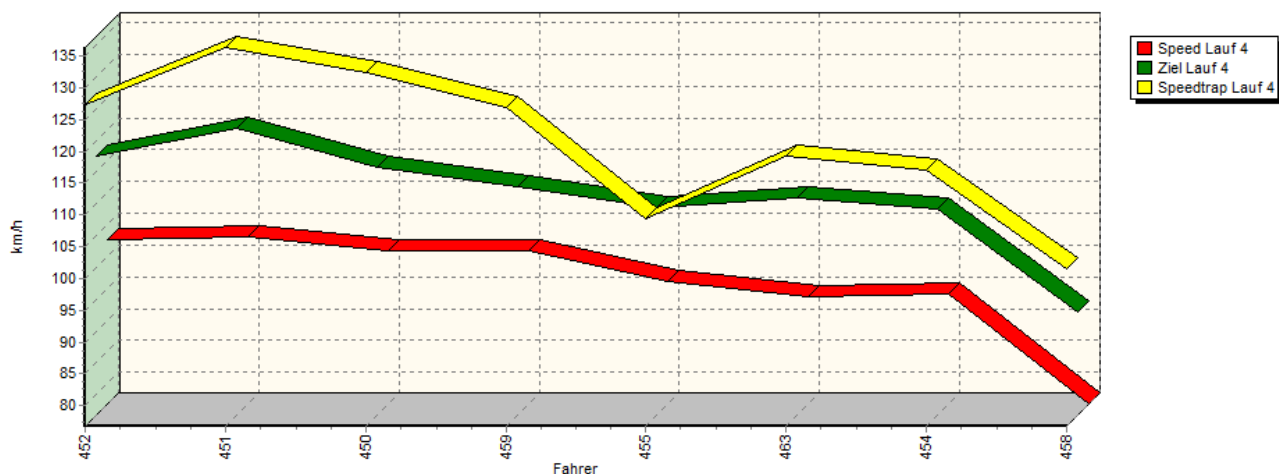


Sektor-Diagramm (Rest) Lauf 3

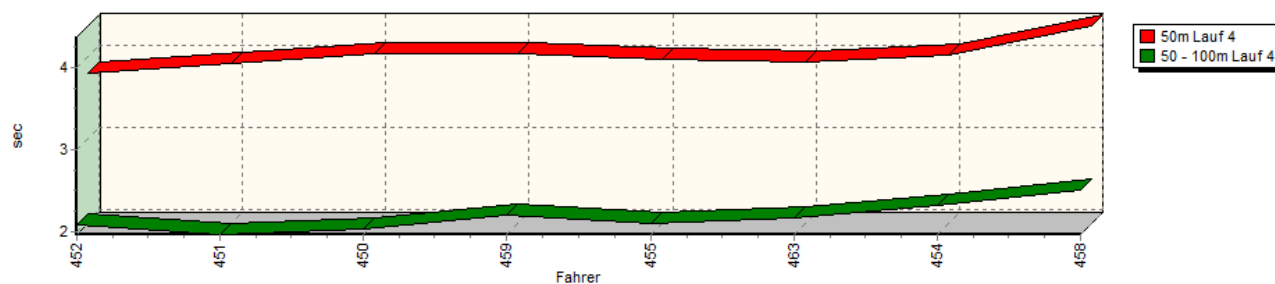


Sektorzeiten & Speeds - Rennen - Gruppe H (DMSB) bis 1150 ccm - Klasse 33

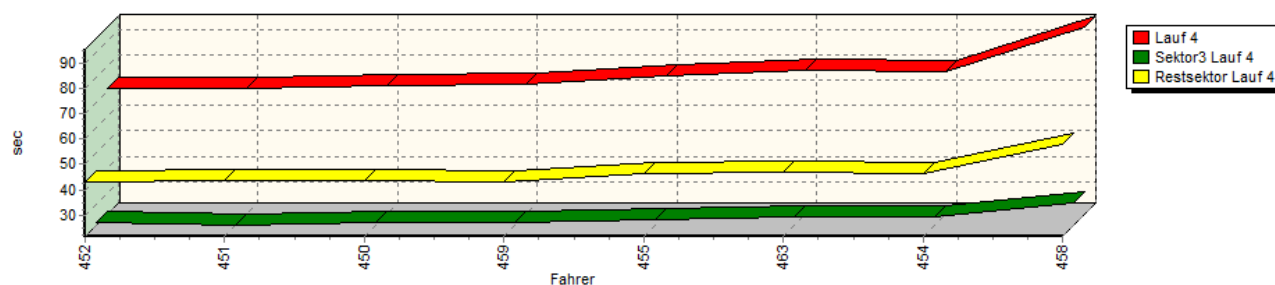
Speed-Diagramm Lauf 4



Sektor-Diagramm (Start) Lauf 4



Sektor-Diagramm (Rest) Lauf 4



Rg.	Nr.	Sektor 1 (50m)	Sektor 2 (50-100m)	Sektor 3	Speed Trap	Sektor 4	Speed (Ziel)	Laufzeit	Speed (Lauf)
1	452	STEGMANN Tobias							
		Schneider Audi 50							
	Lauf 1:	00:03.811	00:02.095	00:22.420	128,33 km/h	00:42.242	116,00 km/h	01:10.568	103,56 km/h
	Lauf 2:	00:03.850	00:02.094	00:22.370	129,16 km/h	00:43.320	110,41 km/h	01:11.634	102,02 km/h
	Lauf 3:	00:04.316	00:02.197	00:23.189	125,64 km/h	00:45.667	110,06 km/h	01:15.369	96,96 km/h
	Lauf 4:	00:03.794	00:02.080	00:22.587	127,33 km/h	00:42.800	117,53 km/h	01:11.261	102,55 km/h

Sektorzeiten & Speeds - Rennen - Gruppe H (DMSB) bis 1150 ccm - Klasse 33

Rg.	Nr.	Sektor 1 (50m)	Sektor 2 (50-100m)	Sektor 3	Speed Trap	Sektor 4	Speed (Ziel)	Laufzeit	Speed (Lauf)	
2	451	STELBERG Thomas	VW Schneider Polo Coupé 16V							
		Lauf 1:	00:03.937	00:02.007	00:21.552	136,21 km/h	00:43.121	122,13 km/h	01:10.617	103,49 km/h
		Lauf 2:	00:04.128	00:02.053	00:22.280	135,02 km/h	00:46.958	112,80 km/h	01:15.419	96,90 km/h
		Lauf 3:	00:04.467	00:02.120	00:22.832	132,37 km/h	00:48.579	112,26 km/h	01:17.998	93,69 km/h
		Lauf 4:	00:03.903	00:01.969	00:21.655	136,36 km/h	00:43.348	121,98 km/h	01:10.875	103,11 km/h
3	450	DEUTSCH Bernd	Schneider Audi 50							
		Lauf 1:	00:04.018	00:02.019	00:22.362	133,81 km/h	00:43.379	115,52 km/h	01:11.778	101,81 km/h
		Lauf 2:	00:03.983	00:02.014	00:22.625	133,00 km/h	00:44.658	114,25 km/h	01:13.280	99,73 km/h
		Lauf 3:	00:04.470	00:02.089	00:23.529	127,92 km/h	00:47.285	107,74 km/h	01:17.373	94,45 km/h
		Lauf 4:	00:04.020	00:02.037	00:22.503	132,42 km/h	00:43.840	115,78 km/h	01:12.400	100,94 km/h
4	459	RICHTER Peter	VW Capricorn Polo							
		Lauf 1:	00:03.953	00:02.170	00:22.944	127,34 km/h	00:44.230	112,73 km/h	01:13.297	99,70 km/h
		Lauf 2:	00:04.142	00:02.179	00:23.216	127,02 km/h	00:44.475	111,98 km/h	01:14.012	98,74 km/h
		Lauf 3:	00:04.452	00:02.271	00:24.012	124,59 km/h	00:47.724	108,58 km/h	01:18.459	93,14 km/h
		Lauf 4:	00:04.033	00:02.202	00:22.971	126,99 km/h	00:43.315	112,80 km/h	01:12.521	100,77 km/h
5	455	EBERLE Jörg	Fiat 127 Sturm Keepsake							
		Lauf 1:	00:03.906	00:02.091	00:23.098	126,27 km/h	00:44.092	112,82 km/h	01:13.187	99,85 km/h
		Lauf 2:	00:04.247	00:02.154	00:23.869	124,17 km/h	00:46.137	109,43 km/h	01:16.407	95,65 km/h
		Lauf 3:	00:04.173	00:02.138	00:24.082	121,31 km/h	00:48.608	106,30 km/h	01:19.001	92,51 km/h
		Lauf 4:	00:03.967	00:02.098	00:23.770	109,36 km/h	00:46.320	109,49 km/h	01:16.155	95,96 km/h
6	463	DEUTSCH Stefanie	Schneider Polo I							
		Lauf 1:	00:03.876	00:02.143	00:24.470	120,90 km/h	00:46.015	111,42 km/h	01:16.504	95,52 km/h
		Lauf 2:	00:03.939	00:02.169	00:24.683	121,55 km/h	00:47.168	108,61 km/h	01:17.959	93,74 km/h
		Lauf 3:	00:04.414	00:02.274	00:25.295	117,93 km/h	00:49.933	106,08 km/h	01:21.916	89,21 km/h
		Lauf 4:	00:03.925	00:02.168	00:25.098	119,18 km/h	00:46.822	110,86 km/h	01:18.013	93,68 km/h
7	454	RAUCH Rolf	Fiat 128 Coupé							
		Lauf 1:	00:04.134	00:02.311	00:25.149	116,57 km/h	00:46.782	109,58 km/h	01:18.376	93,24 km/h
		Lauf 2:	00:04.257	00:02.363	00:26.389	113,84 km/h	00:49.813	102,82 km/h	01:22.822	88,24 km/h
		Lauf 3:	00:04.672	00:02.405	00:26.545	112,17 km/h	00:52.037	100,98 km/h	01:25.659	85,32 km/h
		Lauf 4:	00:04.016	00:02.319	00:25.113	117,02 km/h	00:46.220	109,23 km/h	01:17.668	94,09 km/h
8	458	SIEBERT Laura	Autobianchi A112 Abarth							
		Lauf 1:	00:04.275	00:02.476	00:29.976	101,13 km/h	00:58.625	92,14 km/h	01:35.352	76,64 km/h
		Lauf 2:	00:04.935	00:02.576	00:30.751	101,78 km/h	00:59.489	90,23 km/h	01:37.751	74,76 km/h
		Lauf 3:	00:05.434	00:02.617	00:31.202	99,64 km/h	01:01.072	90,15 km/h	01:40.325	72,84 km/h
		Lauf 4:	00:04.365	00:02.505	00:30.380	101,56 km/h	00:57.967	92,91 km/h	01:35.217	76,75 km/h