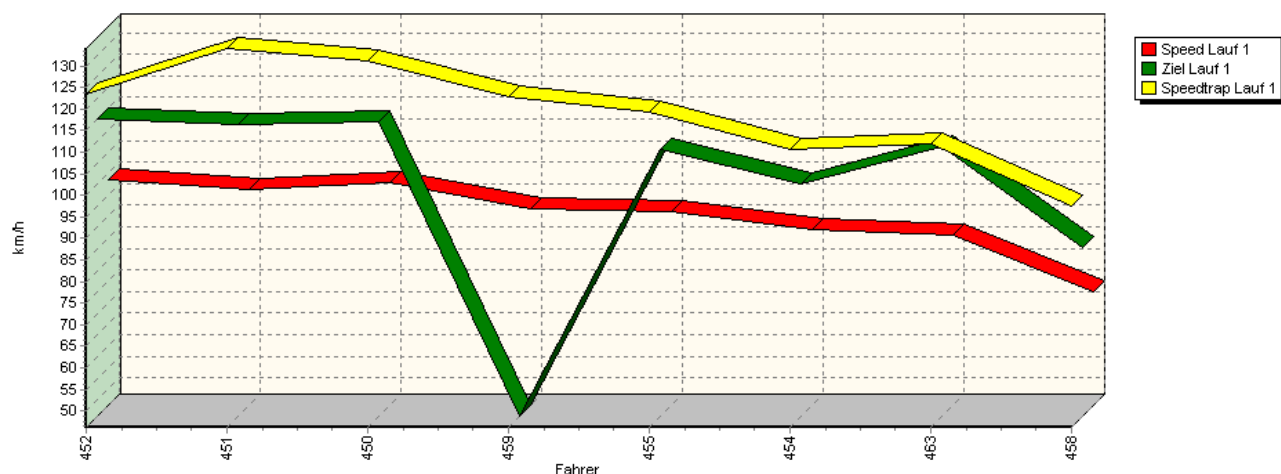
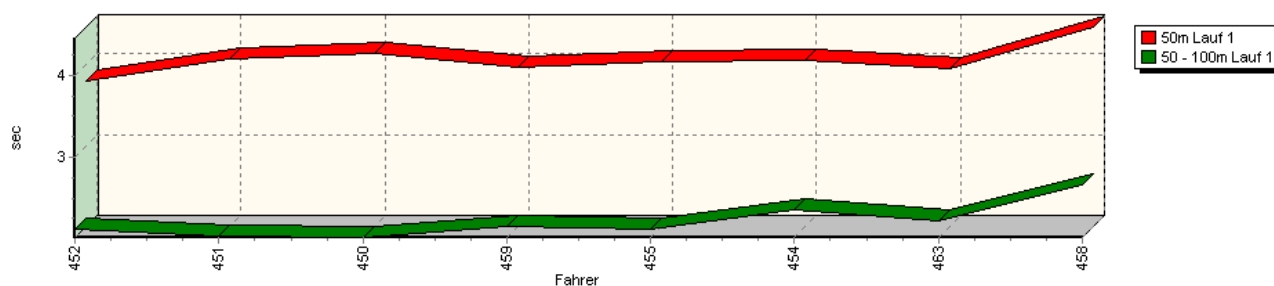


Sektorzeiten & Speeds - Training - Gruppe H (DMSB) bis 1150 ccm - Klasse 33

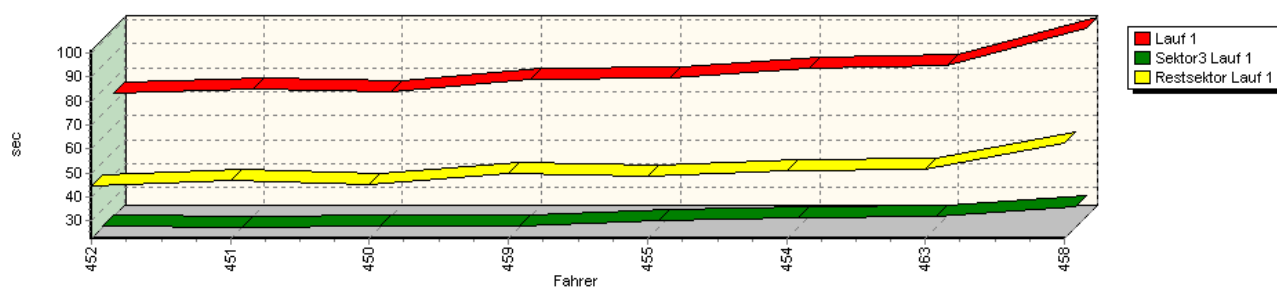
Speed-Diagramm Lauf 1



Sektor-Diagramm (Start) Lauf 1

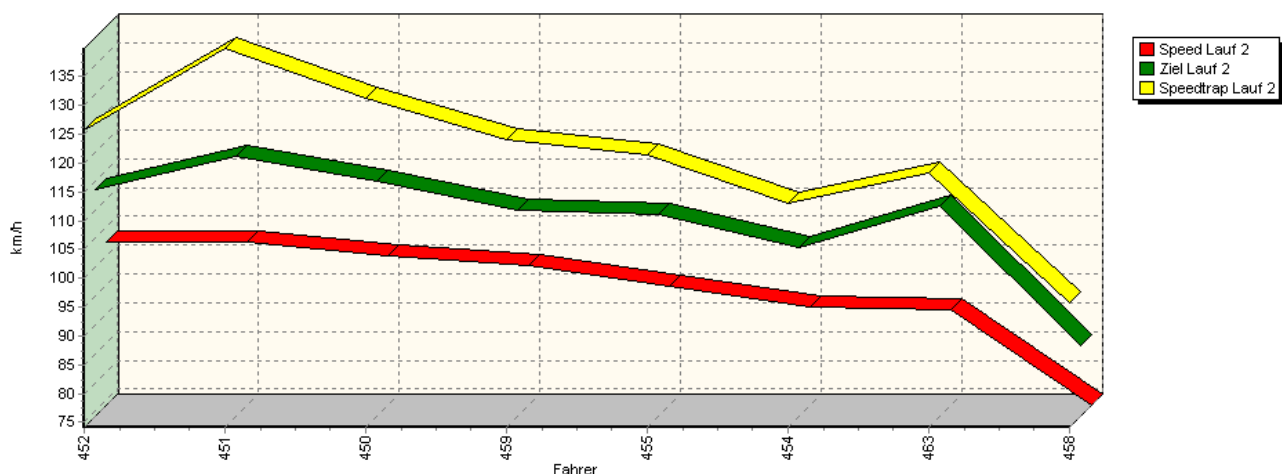


Sektor-Diagramm (Rest) Lauf 1

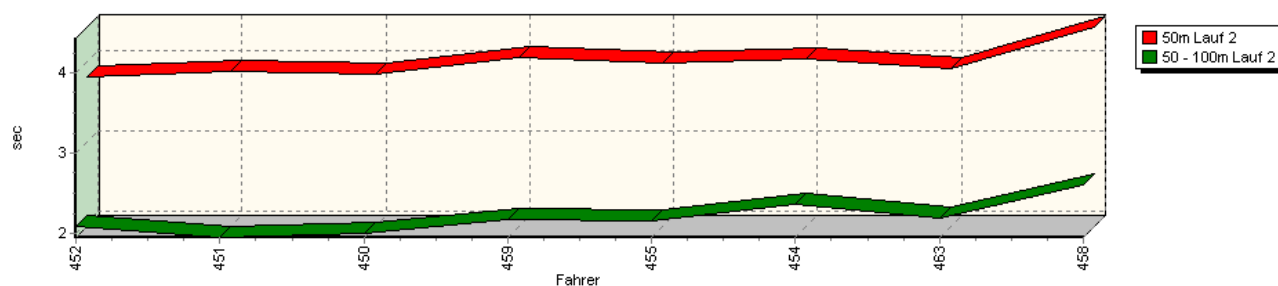


Sektorzeiten & Speeds - Training - Gruppe H (DMSB) bis 1150 ccm - Klasse 33

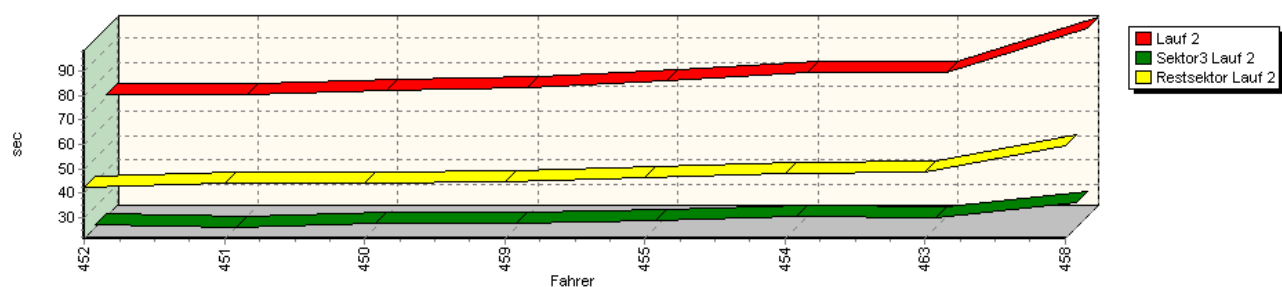
Speed-Diagramm Lauf 2



Sektor-Diagramm (Start) Lauf 2

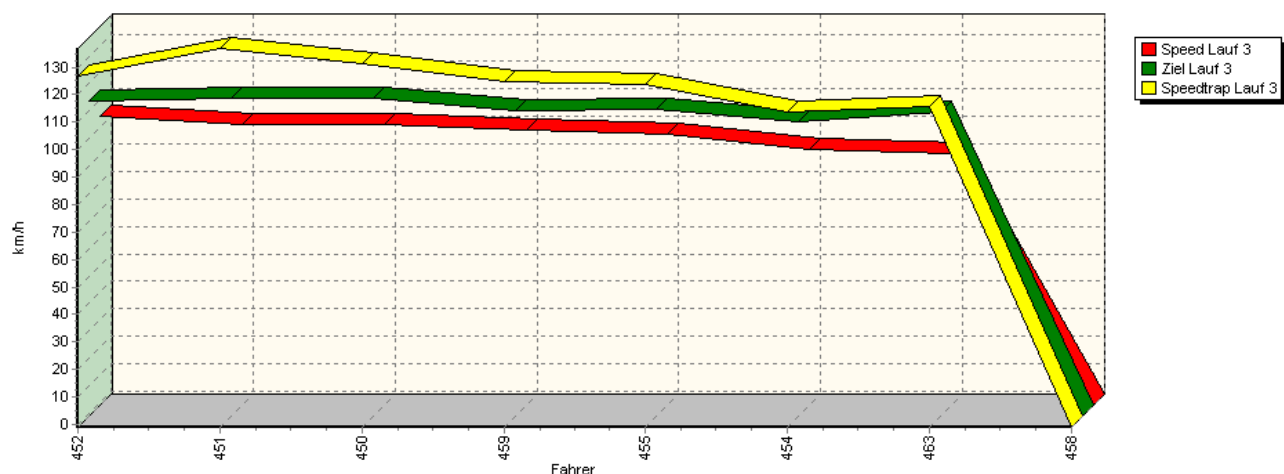


Sektor-Diagramm (Rest) Lauf 2

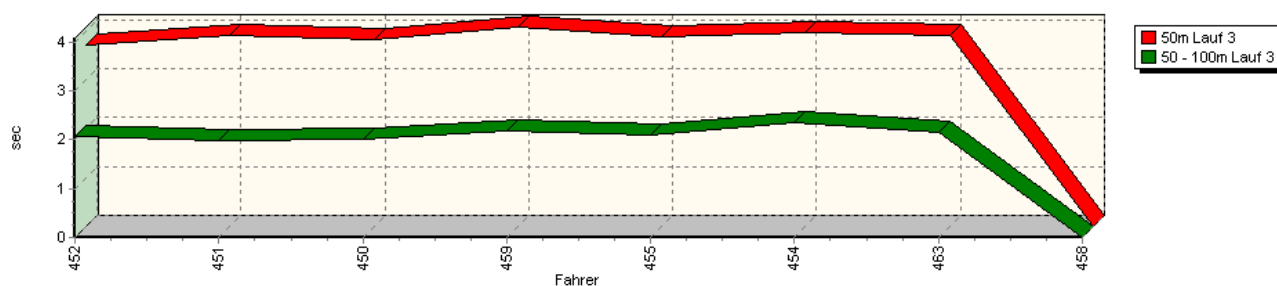


Sektorzeiten & Speeds - Training - Gruppe H (DMSB) bis 1150 ccm - Klasse 33

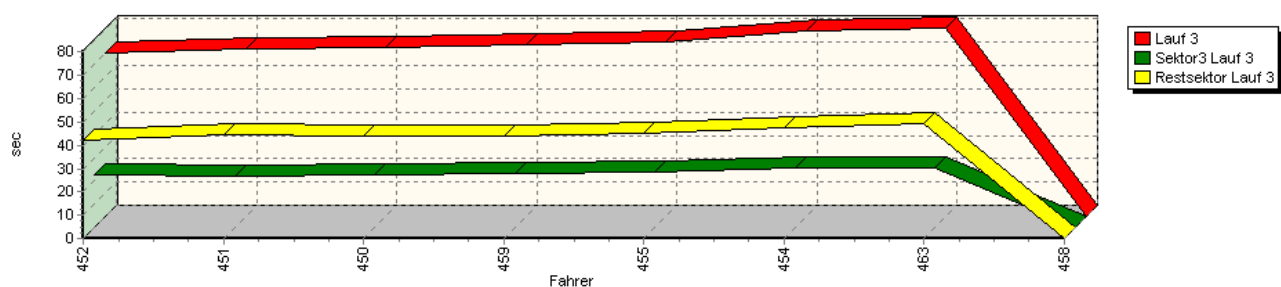
Speed-Diagramm Lauf 3



Sektor-Diagramm (Start) Lauf 3

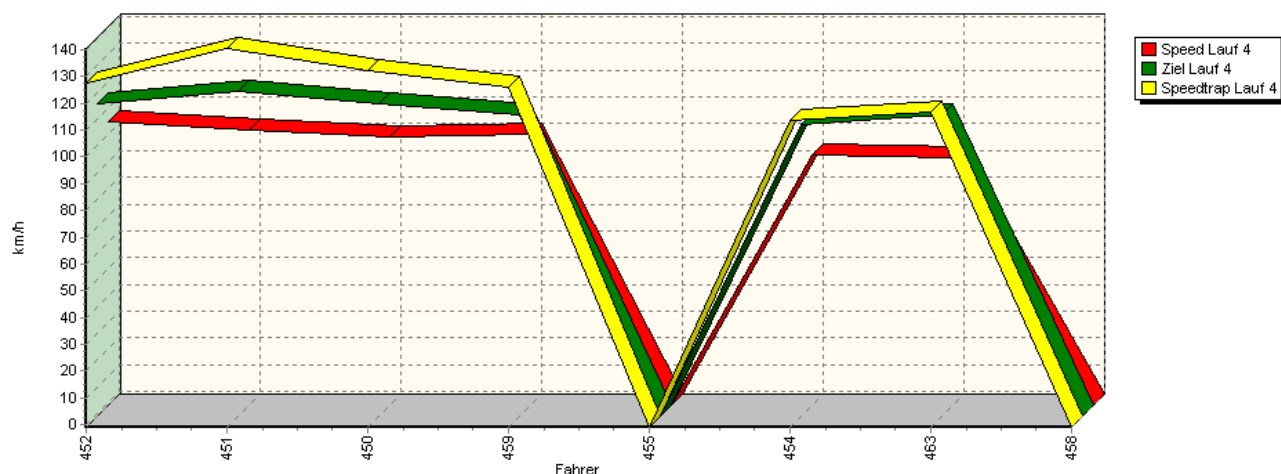


Sektor-Diagramm (Rest) Lauf 3

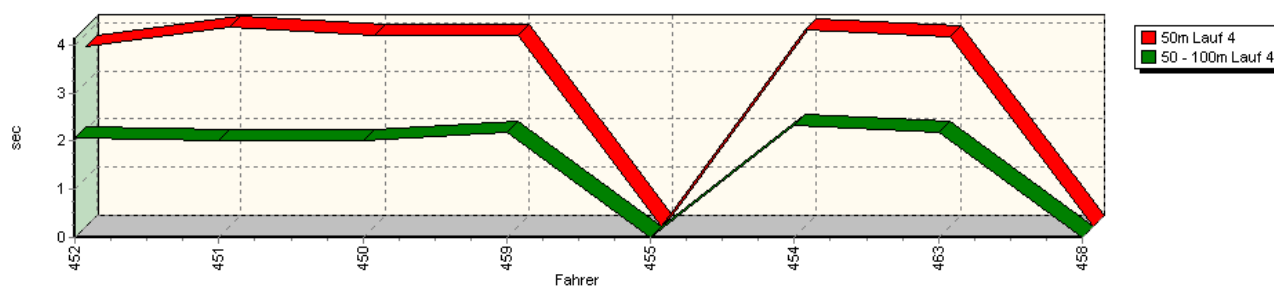


Sektorzeiten & Speeds - Training - Gruppe H (DMSB) bis 1150 ccm - Klasse 33

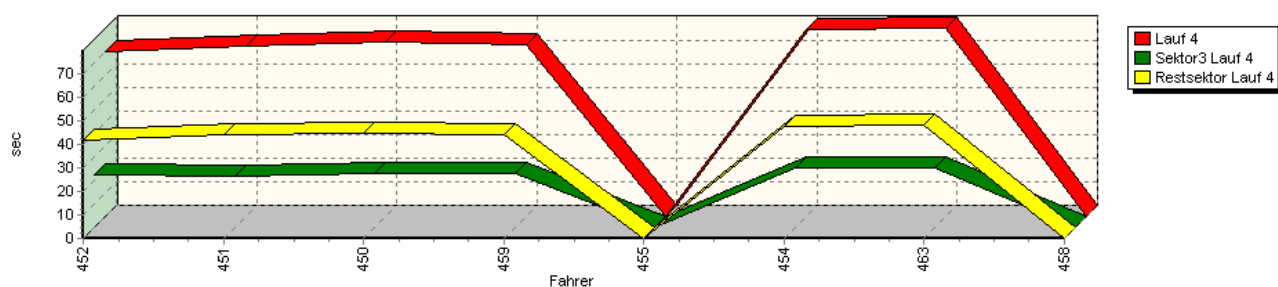
Speed-Diagramm Lauf 4



Sektor-Diagramm (Start) Lauf 4



Sektor-Diagramm (Rest) Lauf 4



Rg.	Nr.	Sektor 1 (50m)	Sektor 2 (50-100m)	Sektor 3	Speed Trap	Sektor 4	Speed (Ziel)	Laufzeit	Speed (Lauf)	
1	452	STEGMANN Tobias		Schneider Audi 50						
		Lauf 1:	00:03.806	00:02.121	00:23.653	123,48 km/h	00:44.538	115,10 km/h	01:14.118	98,60 km/h
		Lauf 2:	00:03.818	00:02.087	00:22.601	125,79 km/h	00:42.734	113,46 km/h	01:11.240	102,58 km/h
		Lauf 3:	00:03.707	00:02.062	00:22.293	126,53 km/h	00:42.152	113,87 km/h	01:10.214	104,08 km/h
		Lauf 4:	00:03.724	00:02.055	00:22.210	127,57 km/h	00:41.845	115,97 km/h	01:09.834	104,65 km/h

Sektorzeiten & Speeds - Training - Gruppe H (DMSB) bis 1150 ccm - Klasse 33

Rg.	Nr.	Sektor 1 (50m)	Sektor 2 (50-100m)	Sektor 3	Speed Trap	Sektor 4	Speed (Ziel)	Laufzeit	Speed (Lauf)	
2	451	STELBERG Thomas		VW Schneider Polo Coupé 16V						
		Lauf 1:	00:04.071	00:02.043	00:22.791	134,03 km/h	00:47.050	113,81 km/h	01:15.955	96,22 km/h
		Lauf 2:	00:03.876	00:01.945	00:21.587	139,89 km/h	00:43.973	119,20 km/h	01:11.381	102,38 km/h
		Lauf 3:	00:03.907	00:01.977	00:21.852	136,80 km/h	00:44.437	114,69 km/h	01:12.173	101,26 km/h
		Lauf 4:	00:04.135	00:02.020	00:21.775	140,54 km/h	00:43.852	120,16 km/h	01:11.782	101,81 km/h
3	450	DEUTSCH Bernd		Schneider Audi 50						
		Lauf 1:	00:04.144	00:02.028	00:23.296	131,07 km/h	00:45.220	114,44 km/h	01:14.688	97,85 km/h
		Lauf 2:	00:03.838	00:01.996	00:23.006	131,19 km/h	00:44.186	115,05 km/h	01:13.026	100,07 km/h
		Lauf 3:	00:03.819	00:02.013	00:22.460	131,04 km/h	00:43.921	114,66 km/h	01:12.213	101,20 km/h
		Lauf 4:	00:03.954	00:02.021	00:22.901	132,31 km/h	00:44.734	115,86 km/h	01:13.610	99,28 km/h
4	459	RICHTER Peter		VW Capricorn Polo						
		Lauf 1:	00:03.973	00:02.171	00:23.628	122,70 km/h	00:49.986	46,22 km/h	01:19.758	91,63 km/h
		Lauf 2:	00:04.056	00:02.175	00:23.459	124,07 km/h	00:44.577	109,95 km/h	01:14.267	98,40 km/h
		Lauf 3:	00:04.081	00:02.178	00:23.363	124,69 km/h	00:44.244	110,11 km/h	01:13.866	98,94 km/h
		Lauf 4:	00:03.973	00:02.184	00:22.943	125,89 km/h	00:43.722	111,62 km/h	01:12.822	100,36 km/h
5	455	EBERLE Jörg		Fiat 127 Sturm Keepsake						
		Lauf 1:	00:04.036	00:02.137	00:25.597	119,29 km/h	00:48.502	107,97 km/h	01:20.272	91,04 km/h
		Lauf 2:	00:03.979	00:02.151	00:24.338	121,46 km/h	00:46.546	109,22 km/h	01:17.014	94,89 km/h
		Lauf 3:	00:03.873	00:02.106	00:23.517	123,89 km/h	00:45.358	110,43 km/h	01:14.854	97,63 km/h
		Lauf 4:	*	*	*	* km/h	*	* km/h	*	* km/h
6	454	RAUCH Rolf		Fiat 128 Coupé						
		Lauf 1:	00:04.057	00:02.368	00:26.535	110,78 km/h	00:51.084	100,03 km/h	01:24.044	86,95 km/h
		Lauf 2:	00:04.039	00:02.357	00:25.843	113,13 km/h	00:47.983	103,36 km/h	01:20.222	91,10 km/h
		Lauf 3:	00:03.972	00:02.353	00:25.704	113,83 km/h	00:47.585	105,88 km/h	01:19.614	91,79 km/h
		Lauf 4:	00:04.077	00:02.326	00:25.370	113,92 km/h	00:47.437	107,93 km/h	01:19.210	92,26 km/h
7	463	DEUTSCH Stefanie		Schneider Polo I						
		Lauf 1:	00:03.946	00:02.232	00:27.256	111,98 km/h	00:51.811	108,71 km/h	01:25.245	85,73 km/h
		Lauf 2:	00:03.911	00:02.194	00:25.702	118,37 km/h	00:48.725	110,64 km/h	01:20.532	90,75 km/h
		Lauf 3:	00:03.904	00:02.162	00:25.634	115,60 km/h	00:49.111	109,88 km/h	01:20.811	90,43 km/h
		Lauf 4:	00:03.937	00:02.187	00:25.253	117,02 km/h	00:48.304	111,52 km/h	01:19.681	91,72 km/h
8	458	SIEBERT Laura		Autobianchi A112 Abarth						
		Lauf 1:	00:04.461	00:02.667	00:31.523	97,53 km/h	01:02.348	85,36 km/h	01:40.999	72,36 km/h
		Lauf 2:	00:04.433	00:02.603	00:31.735	95,79 km/h	00:59.781	86,44 km/h	01:38.552	74,15 km/h
		Lauf 3:	*	*	*	* km/h	*	* km/h	*	* km/h
		Lauf 4:	*	*	*	* km/h	*	* km/h	*	* km/h