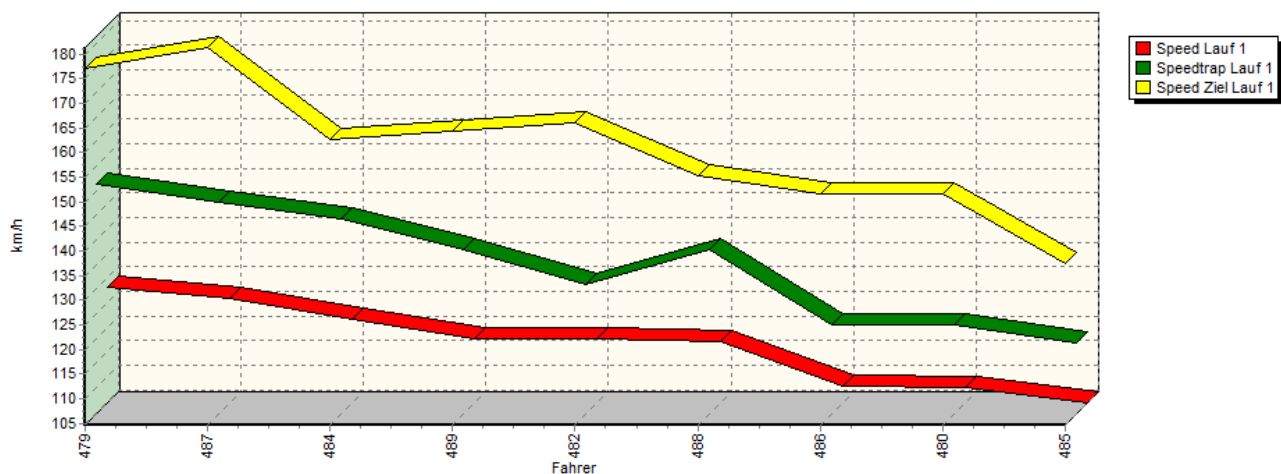
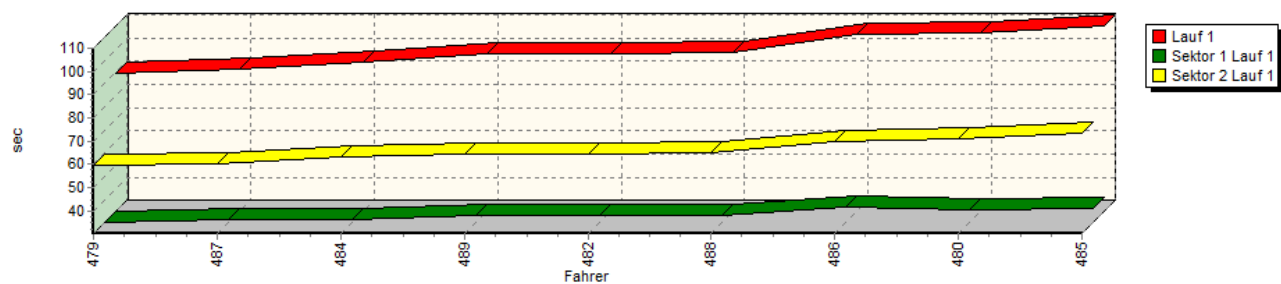


Sektorzeiten & Speeds - Rennen - histor. Automobile +1600 ccm

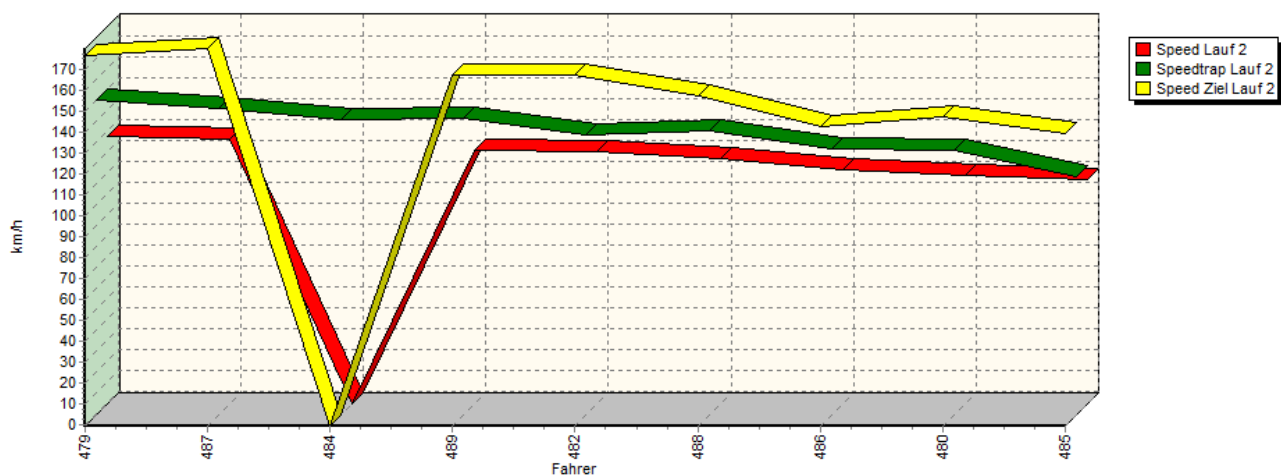
Speed-Diagramm Lauf 1

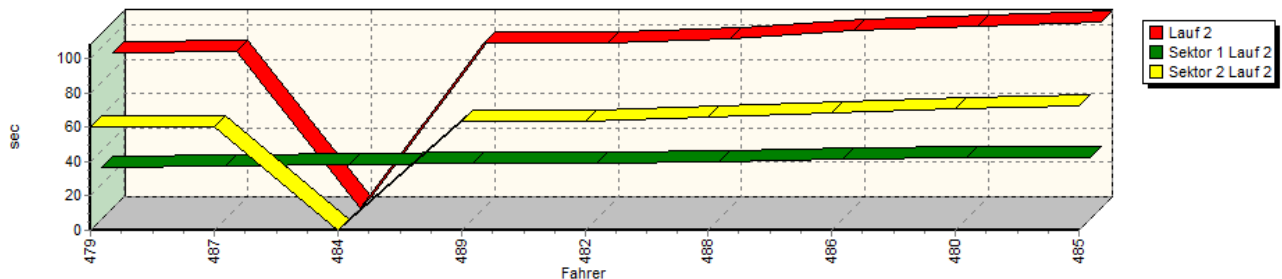


Sektor-Diagramm (Rest) Lauf 1



Speed-Diagramm Lauf 2



**Sektorzeiten & Speeds - Rennen - histor. Automobile +1600 ccm****Sektor-Diagramm (Rest) Lauf 2**

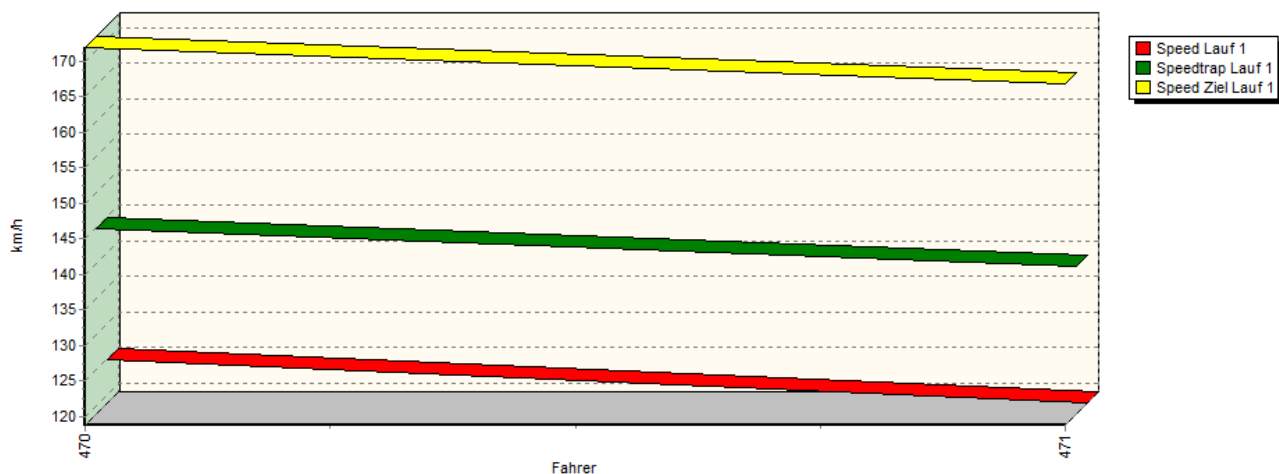
Rg.	Nr.	Sektor 1	Speed Trap	Sektor 2	Speed (Ziel)	Laufzeit	Speed (Lauf)
1	479	LAMPELMAIER Max	Ford Escort RS1800				
		Lauf 1: 00:30.300	151,35 km/h	00:59.625	177,19 km/h	01:29.925	128,11 km/h
		Lauf 2: 00:30.325	149,66 km/h	01:00.191	176,44 km/h	01:30.516	127,27 km/h
2	487	MITTERER Michael	Mazda RX3				
		Lauf 1: 00:31.329	147,76 km/h	01:00.255	181,34 km/h	01:31.584	125,79 km/h
		Lauf 2: 00:30.744	145,74 km/h	01:00.603	179,94 km/h	01:31.347	126,11 km/h
3	484	ZÖCHLING Manfred	VW Golf I GTI				
		Lauf 1: 00:31.364	144,28 km/h	01:03.319	162,73 km/h	01:34.683	121,67 km/h
		Lauf 2: 00:31.897	140,74 km/h	*	* km/h	A	* km/h
4	489	FORSTINGER Werner	Ford RS 2000				
		Lauf 1: 00:33.406	138,17 km/h	01:04.445	164,43 km/h	01:37.851	117,73 km/h
		Lauf 2: 00:32.494	141,03 km/h	01:03.356	167,32 km/h	01:35.850	120,19 km/h
5	482	BRUNNER Franz	Opel Kadett B				
		Lauf 1: 00:33.053	131,08 km/h	01:04.761	166,13 km/h	01:37.814	117,77 km/h
		Lauf 2: 00:32.515	133,43 km/h	01:03.811	167,01 km/h	01:36.326	119,59 km/h
6	488	HOCHECKER Adi	Opel Kadett C-Coupé				
		Lauf 1: 00:33.212	138,13 km/h	01:05.204	155,37 km/h	01:38.416	117,05 km/h
		Lauf 2: 00:33.011	135,16 km/h	01:05.664	157,51 km/h	01:38.675	116,75 km/h
7	486	WARMUTH Rene	VW Golf GTI				
		Lauf 1: 00:36.703	122,69 km/h	01:09.783	151,49 km/h	01:46.486	108,18 km/h
		Lauf 2: 00:34.927	126,78 km/h	01:08.739	142,87 km/h	01:43.666	111,13 km/h
8	480	FREUDENSCHUSS Willi	BMW E30 323i				
		Lauf 1: 00:35.838	122,78 km/h	01:10.982	151,74 km/h	01:46.820	107,85 km/h
		Lauf 2: 00:35.620	125,75 km/h	01:10.526	147,03 km/h	01:46.146	108,53 km/h
9	485	PIEBER Wolfgang	BMW E30 323i				
		Lauf 1: 00:36.557	118,95 km/h	01:13.522	137,41 km/h	01:50.079	104,65 km/h
		Lauf 2: 00:36.113	112,85 km/h	01:12.214	138,88 km/h	01:48.327	106,35 km/h



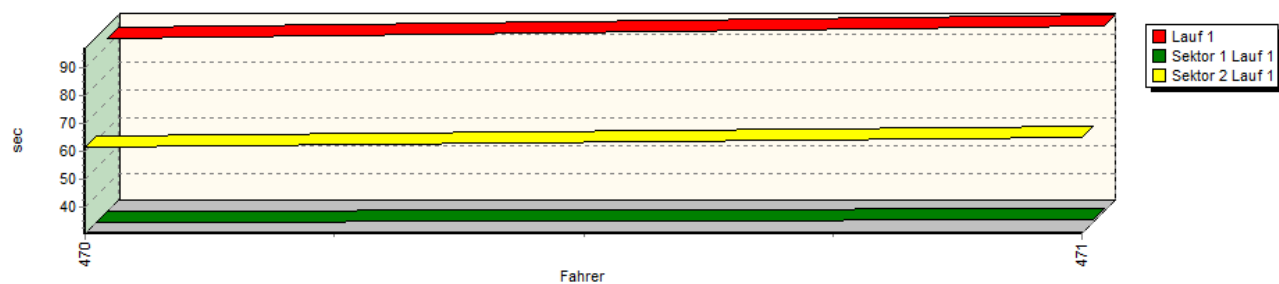


Sektorzeiten & Speeds - Rennen - histor. Automobile +1600 ccm

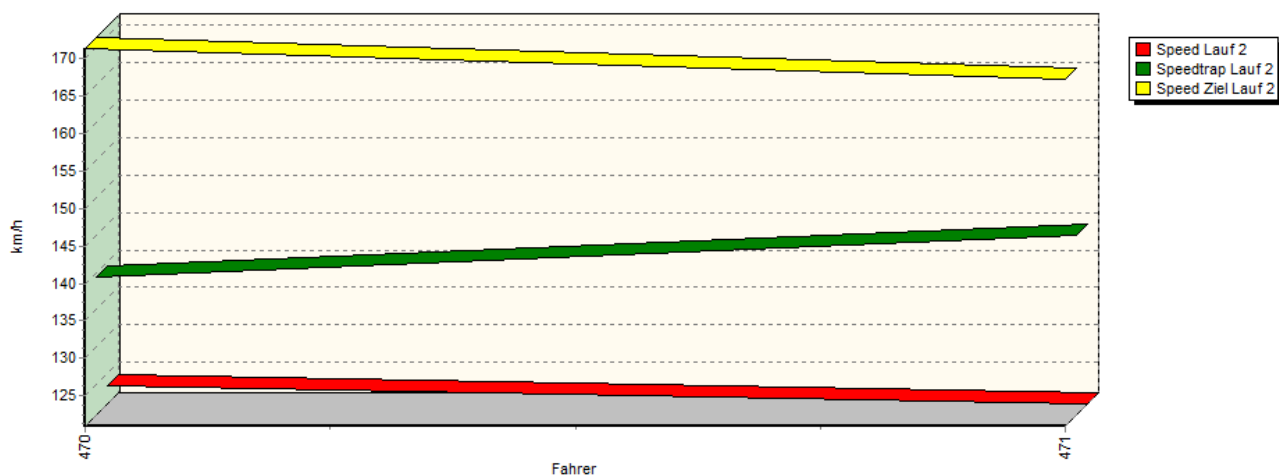
Speed-Diagramm Lauf 1

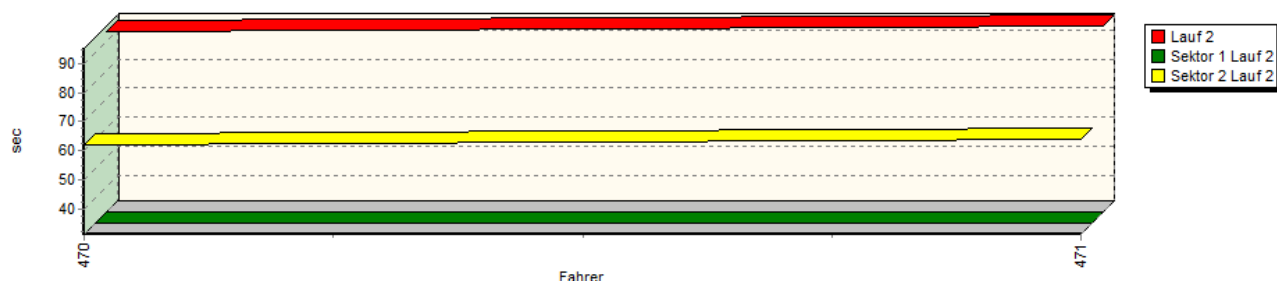


Sektor-Diagramm (Rest) Lauf 1



Speed-Diagramm Lauf 2



**Sektorzeiten & Speeds - Rennen - histor. Automobile +1600 ccm****Sektor-Diagramm (Rest) Lauf 2**

Rg.	Nr.	Sektor 1	Speed Trap	Sektor 2	Speed (Ziel)	Laufzeit	Speed (Lauf)
1	470	GLINZNER Gerald	Porsche Carrera 911				
		Lauf 1: 00:30.783	144,84 km/h	01:01.543	171,87 km/h	01:32.326	124,77 km/h
		Lauf 2: 00:31.214	139,28 km/h	01:02.147	171,33 km/h	01:33.361	123,39 km/h
2	471	RENNER Christian	Porsche 924 Turbo				
		Lauf 1: 00:31.953	139,60 km/h	01:05.062	166,84 km/h	01:37.015	118,74 km/h
		Lauf 2: 00:31.372	144,86 km/h	01:03.873	167,15 km/h	01:35.245	120,95 km/h

