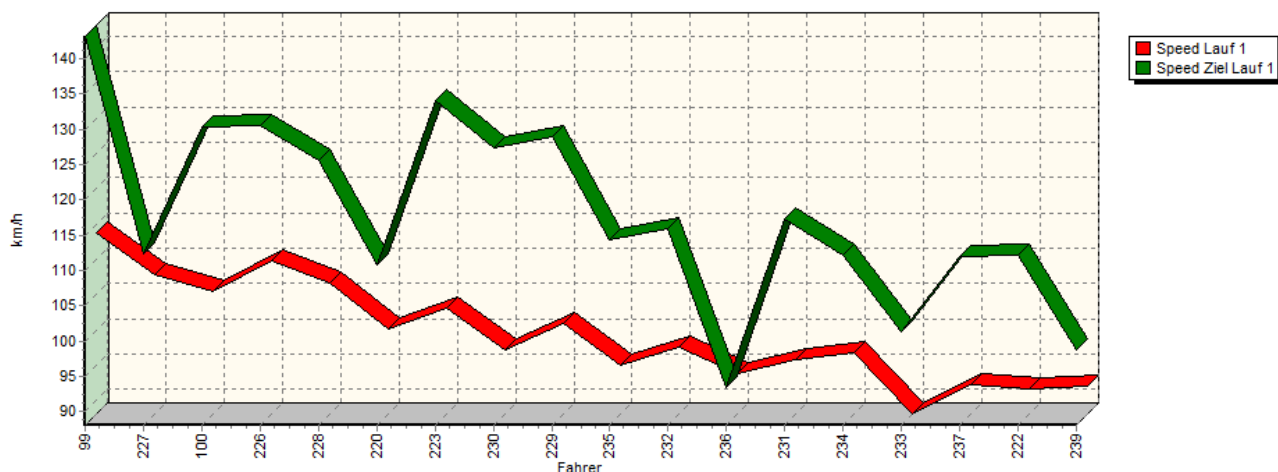
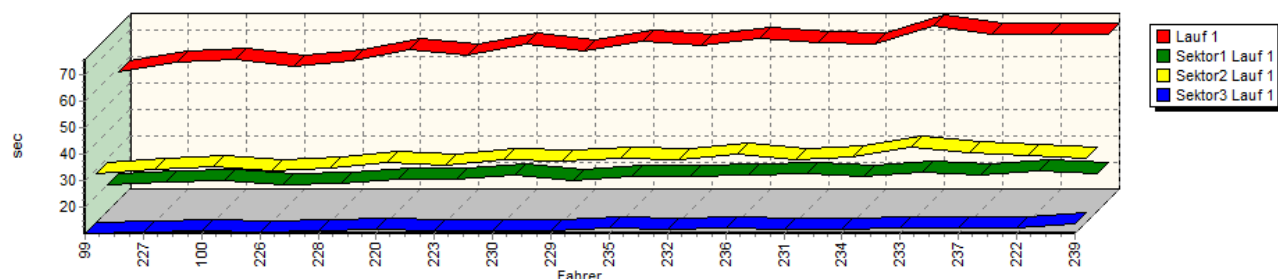


Sektorzeiten & Speeds - Groupe E1-National+E1-FIA+E1-EX Classe 25: +3000 ccm

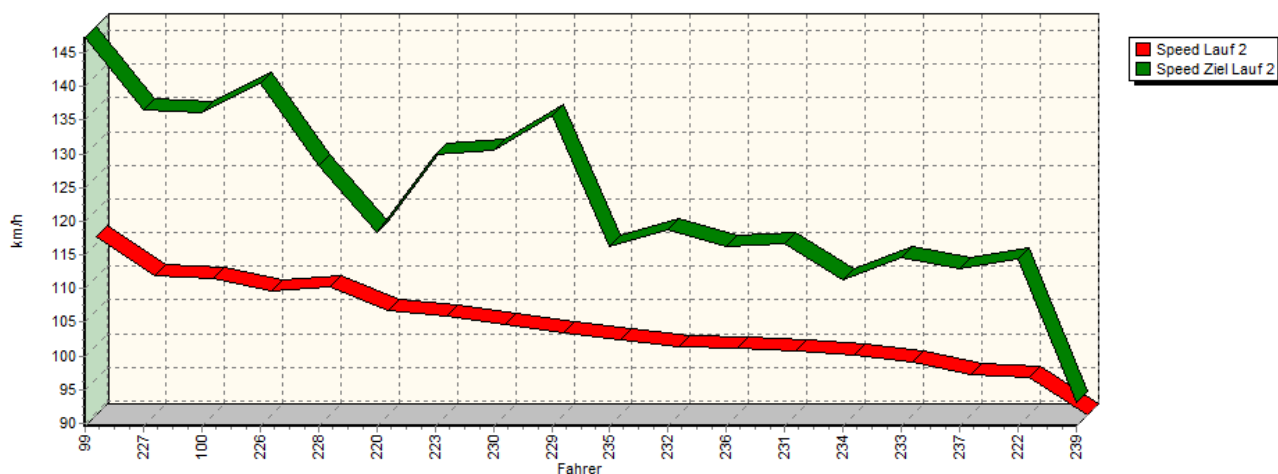
Speed-Diagramm Lauf 1



Sektor-Diagramm (Rest) Lauf 1

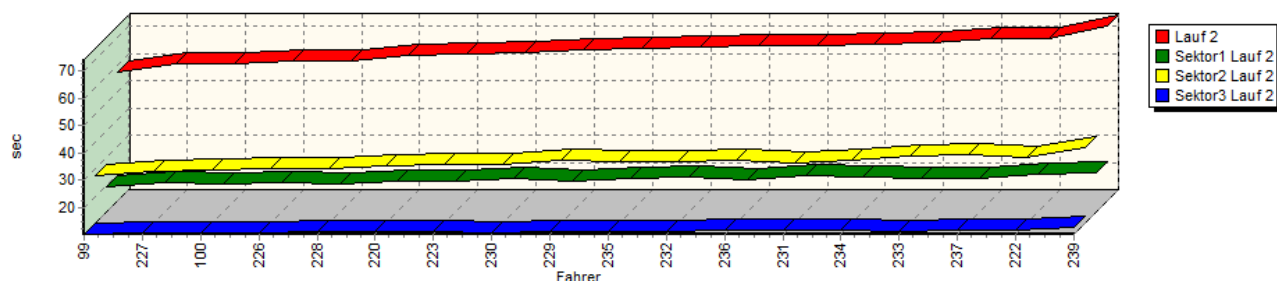


Speed-Diagramm Lauf 2

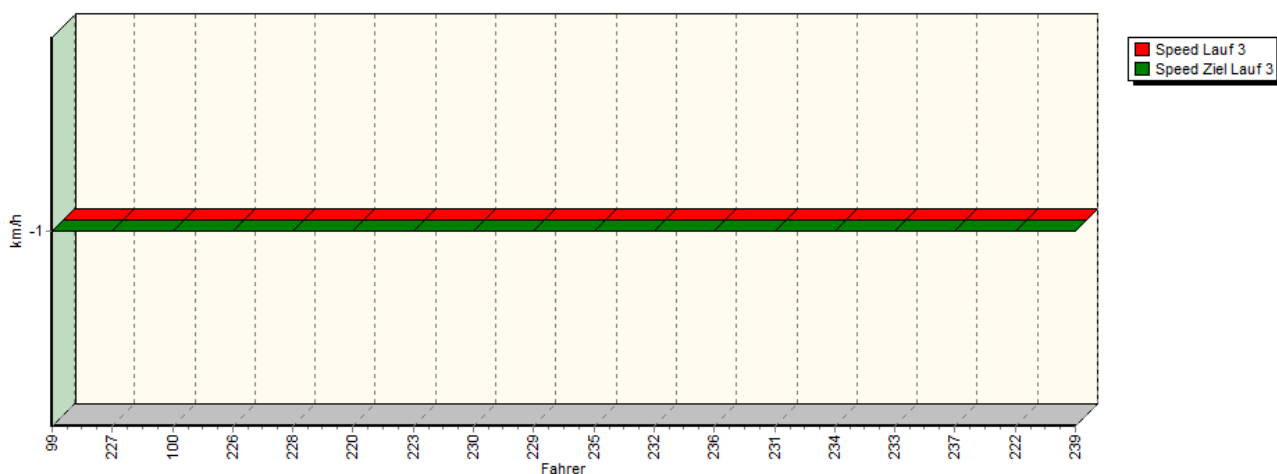


Sektorzeiten & Speeds - Groupe E1-National+E1-FIA+E1-EX Classe 25: +3000 ccm

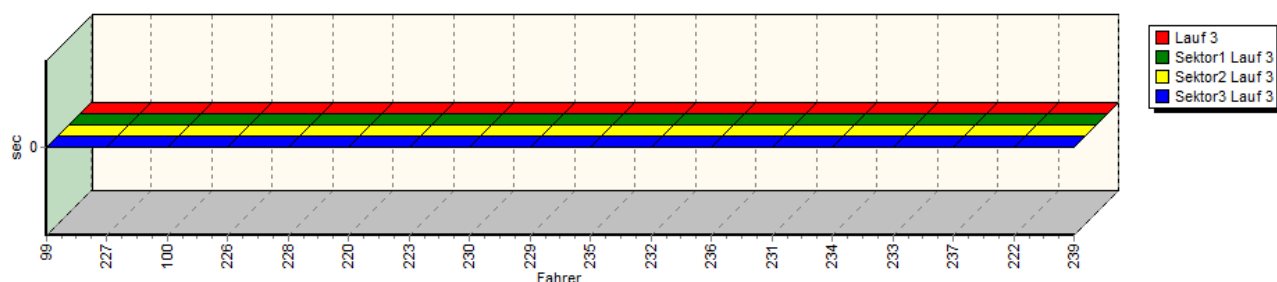
Sektor-Diagramm (Rest) Lauf 2



Speed-Diagramm Lauf 3



Sektor-Diagramm (Rest) Lauf 3



Rg.	Nr.	Sektor 1	Sektor 2	Sektor 3	Speed Ziel	Laufzeit	Speed (Lauf)	
1	99	STOLZ Herbert		Porsche 935 DP11				
		Lauf 1:	00:20.197	00:28.268	00:10.061	143,19 km/h	00:58.526	113,80 km/h
		Lauf 2:	00:19.539	00:27.791	00:10.065	147,29 km/h	00:57.395	116,04 km/h
		Lauf 3:	*	*	*	* km/h	*	* km/h



European Hill Race
Bergrennen Eschdorf
2. - 4. Mai 2014
Luxemburger Bergmeisterschaft 2014
Deutsche Bergmeisterschaft 2014



Sektorzeiten & Speeds - Groupe E1-National+E1-FIA+E1-EX Classe 25: +3000 ccm

Rg.	Nr.	Sektor 1	Sektor 2	Sektor 3	Speed Ziel	Laufzeit	Speed (Lauf)
2	227	BRATSCHI Ronnie	Mitsubishi Lancer Evo 8 EGMO				
		Lauf 1: 00:20.930	00:30.169	00:10.644	112,38 km/h	01:01.743	107,87 km/h
		Lauf 2: 00:20.839	00:29.184	00:10.348	136,48 km/h	01:00.371	110,32 km/h
		Lauf 3: *	*	*	* km/h	*	* km/h
3	100	WERVER Nicolas	Porsche 997 Cup S				
		Lauf 1: 00:21.419	00:30.860	00:10.904	130,39 km/h	01:03.183	105,41 km/h
		Lauf 2: 00:20.530	00:29.532	00:10.581	136,07 km/h	01:00.643	109,82 km/h
		Lauf 3: *	*	*	* km/h	*	* km/h
4	226	JELINEK Mike	Subaru Impreza Evo 1				
		Lauf 1: 00:20.259	00:29.665	00:10.723	130,47 km/h	01:00.647	109,82 km/h
		Lauf 2: 00:20.829	00:30.278	00:10.573	140,53 km/h	01:01.680	107,98 km/h
		Lauf 3: *	*	*	* km/h	*	* km/h
5	228	FUCHS Mario	Mitsubishi Lancer Evo 9				
		Lauf 1: 00:20.526	00:30.750	00:11.121	125,57 km/h	01:02.397	106,73 km/h
		Lauf 2: 00:20.154	00:30.303	00:10.925	128,36 km/h	01:01.382	108,50 km/h
		Lauf 3: *	*	*	* km/h	*	* km/h
6	220	STRUCKMANN Norman	Ford Escort RS Cosworth				
		Lauf 1: 00:22.072	00:32.796	00:11.616	110,79 km/h	01:06.484	100,17 km/h
		Lauf 2: 00:21.168	00:31.144	00:11.073	118,25 km/h	01:03.385	105,07 km/h
		Lauf 3: *	*	*	* km/h	*	* km/h
7	223	HANDA Norbert	Lancia Delta Integrale Evo 3				
		Lauf 1: 00:21.874	00:31.667	00:11.092	134,11 km/h	01:04.633	103,04 km/h
		Lauf 2: 00:21.449	00:31.498	00:10.996	129,93 km/h	01:03.943	104,16 km/h
		Lauf 3: *	*	*	* km/h	*	* km/h
8	230	RUCH René	Ferrari 355 Gt				
		Lauf 1: 00:23.552	00:33.693	00:11.338	127,36 km/h	01:08.583	97,11 km/h
		Lauf 2: 00:22.418	00:31.726	00:10.524	130,58 km/h	01:04.668	102,99 km/h
		Lauf 3: *	*	*	* km/h	*	* km/h
9	229	EDWARDS Keith	Audi Quattro S1				
		Lauf 1: 00:21.734	00:33.024	00:11.281	128,97 km/h	01:06.039	100,85 km/h
		Lauf 2: 00:21.151	00:33.236	00:11.048	135,79 km/h	01:05.435	101,78 km/h
		Lauf 3: *	*	*	* km/h	*	* km/h
10	235	SCHILLING Nico	Subaru Impreza WRX STI				
		Lauf 1: 00:23.291	00:34.385	00:12.393	114,42 km/h	01:10.069	95,05 km/h
		Lauf 2: 00:22.188	00:32.628	00:11.258	116,34 km/h	01:06.074	100,80 km/h
		Lauf 3: *	*	*	* km/h	*	* km/h
11	232	EMOND Stéphane	BMW M3				
		Lauf 1: 00:22.941	00:33.696	00:11.701	115,87 km/h	01:08.338	97,46 km/h
		Lauf 2: 00:22.904	00:32.621	00:11.286	118,83 km/h	01:06.811	99,68 km/h
		Lauf 3: *	*	*	* km/h	*	* km/h
12	236	VALENTINY Charles	Mitsubishi Lancer Evo 7				
		Lauf 1: 00:23.453	00:35.539	00:11.955	93,39 km/h	01:10.947	93,87 km/h
		Lauf 2: 00:22.102	00:33.461	00:11.356	116,30 km/h	01:06.919	99,52 km/h
		Lauf 3: *	*	*	* km/h	*	* km/h
13	231	KUSTER Michael	Maserati GranSport Trofeo				
		Lauf 1: 00:24.461	00:33.464	00:11.564	117,29 km/h	01:09.489	95,84 km/h
		Lauf 2: 00:23.490	00:32.211	00:11.464	116,57 km/h	01:07.165	99,16 km/h
		Lauf 3: *	*	*	* km/h	*	* km/h



European Hill Race

Bergrennen Eschdorf

2. - 4. Mai 2014

Luxemburger Bergmeisterschaft 2014

Deutsche Bergmeisterschaft 2014



Sektorzeiten & Speeds - Groupe E1-National+E1-FIA+E1-EX Classe 25: +3000 ccm

Rg.	Nr.	Sektor 1	Sektor 2	Sektor 3	Speed Ziel	Laufzeit	Speed (Lauf)	
14	234	KREMER Yves		Subaru Impreza				
		Lauf 1:	00:22.921	00:34.458	00:11.441	112,16 km/h	01:08.820	96,77 km/h
		Lauf 2:	00:22.700	00:33.401	00:11.550	111,19 km/h	01:07.651	98,45 km/h
		Lauf 3:	*	*	*	* km/h	*	* km/h
15	233	MOUGIN Didier		Seat Leon Supercopa				
		Lauf 1:	00:24.944	00:38.602	00:12.088	101,31 km/h	01:15.634	88,06 km/h
		Lauf 2:	00:22.208	00:34.929	00:11.157	114,54 km/h	01:08.294	97,52 km/h
		Lauf 3:	*	*	*	* km/h	*	* km/h
16	237	WAMPACH Romain		Subaru Impreza				
		Lauf 1:	00:23.883	00:36.244	00:12.103	111,99 km/h	01:12.230	92,21 km/h
		Lauf 2:	00:22.647	00:35.231	00:11.809	112,90 km/h	01:09.687	95,57 km/h
		Lauf 3:	*	*	*	* km/h	*	* km/h
17	222	LUDWIG Harald		BMW M3 e36				
		Lauf 1:	00:25.392	00:35.282	00:12.000	112,18 km/h	01:12.674	91,64 km/h
		Lauf 2:	00:24.191	00:34.049	00:11.745	114,42 km/h	01:09.985	95,16 km/h
		Lauf 3:	*	*	*	* km/h	*	* km/h
18	239	SOISSON Claude		Seat Leon Turbo				
		Lauf 1:	00:24.425	00:34.087	00:13.852	98,64 km/h	01:12.364	92,04 km/h
		Lauf 2:	00:24.246	00:37.620	00:12.491	93,10 km/h	01:14.357	89,57 km/h
		Lauf 3:	*	*	*	* km/h	*	* km/h