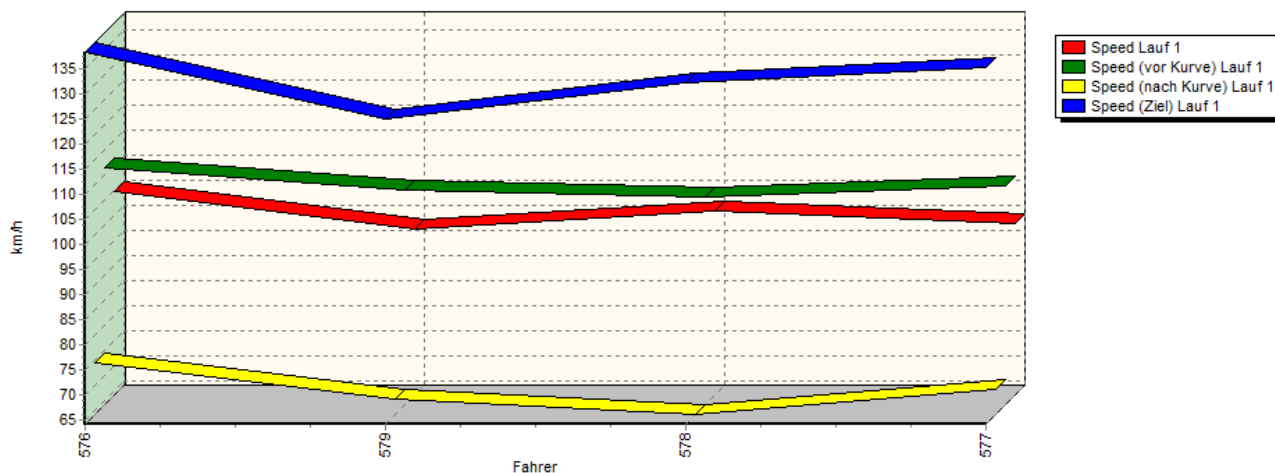
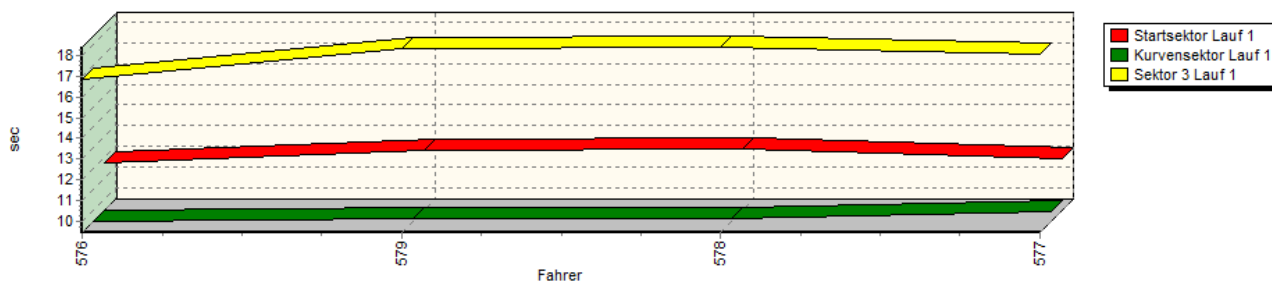


## Sektorzeiten & Speeds - Gruppe A,R2,R3,F,CTC/CGT

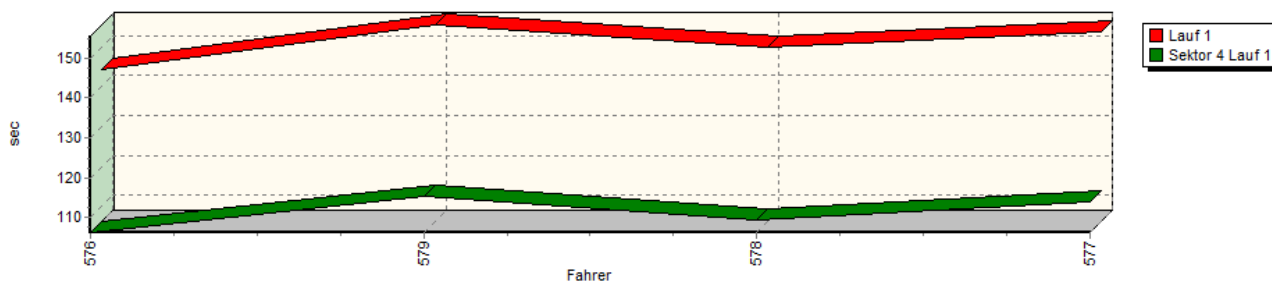
Speed-Diagramm Lauf 1



Sektor-Diagramm (Start) Lauf 1

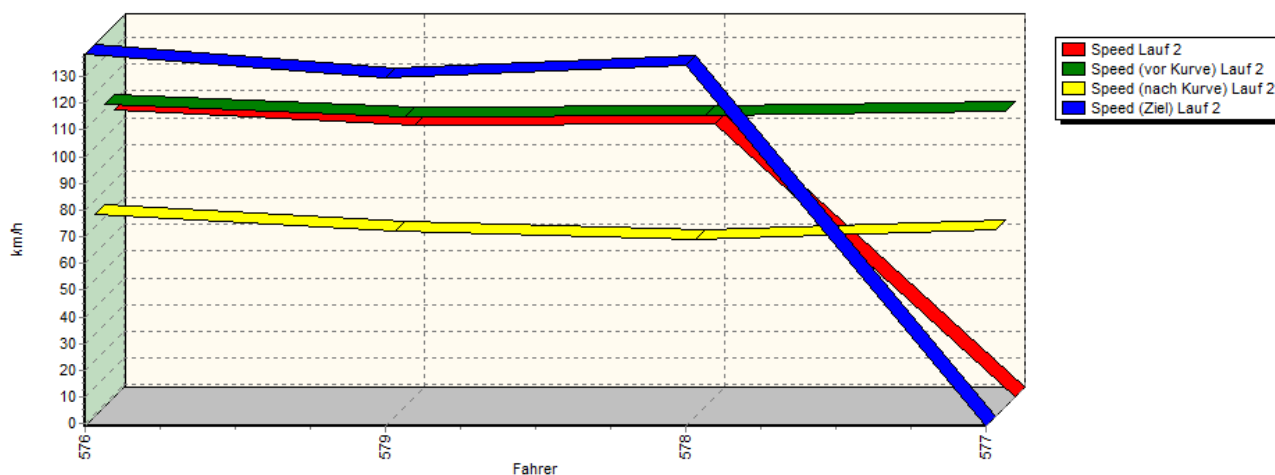


Sektor-Diagramm (Rest) Lauf 1

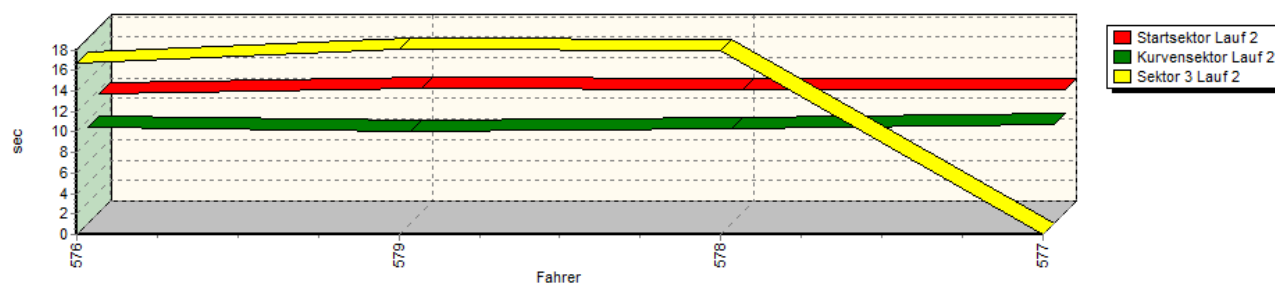


## Sektorzeiten & Speeds - Gruppe A,R2,R3,F,CTC/CGT

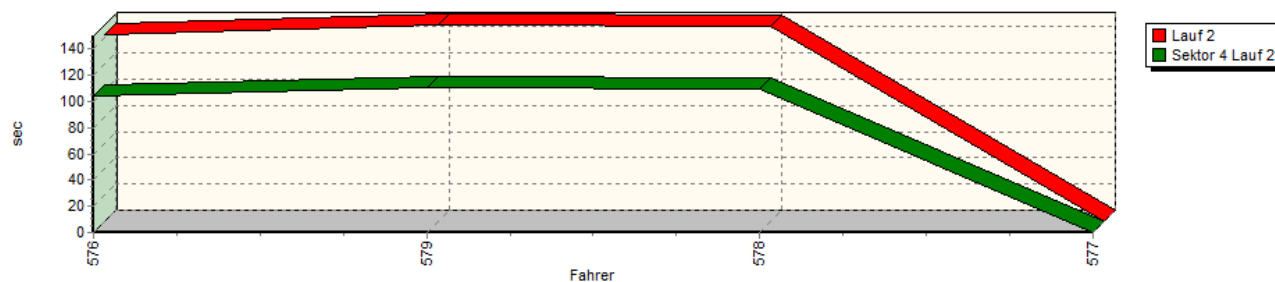
Speed-Diagramm Lauf 2



Sektor-Diagramm (Start) Lauf 2

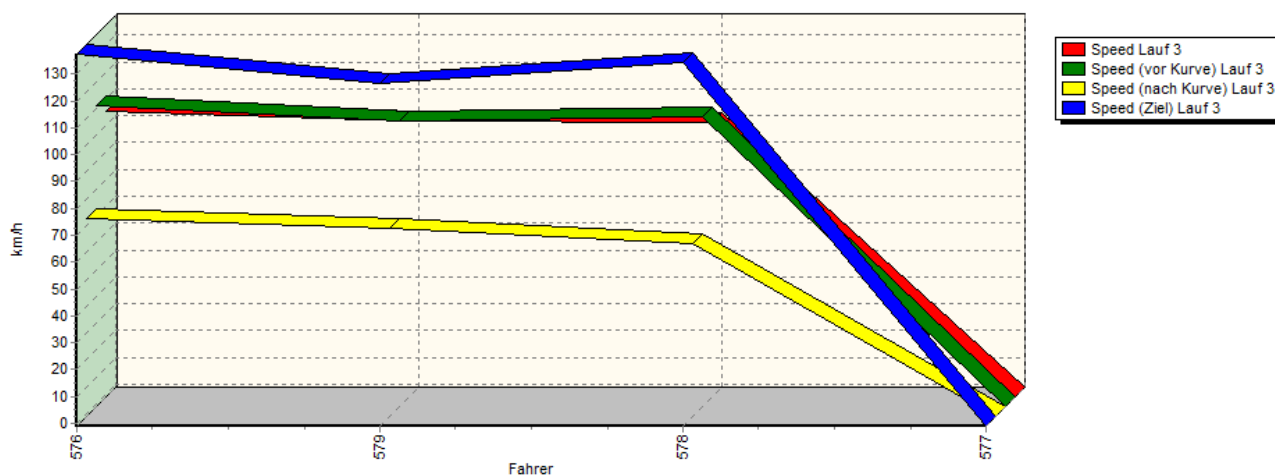


Sektor-Diagramm (Rest) Lauf 2

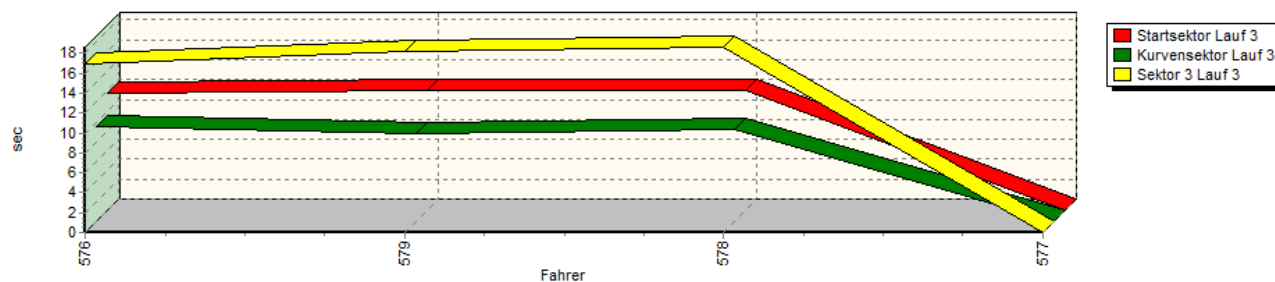


## Sektorzeiten &amp; Speeds - Gruppe A,R2,R3,F,CTC/CGT

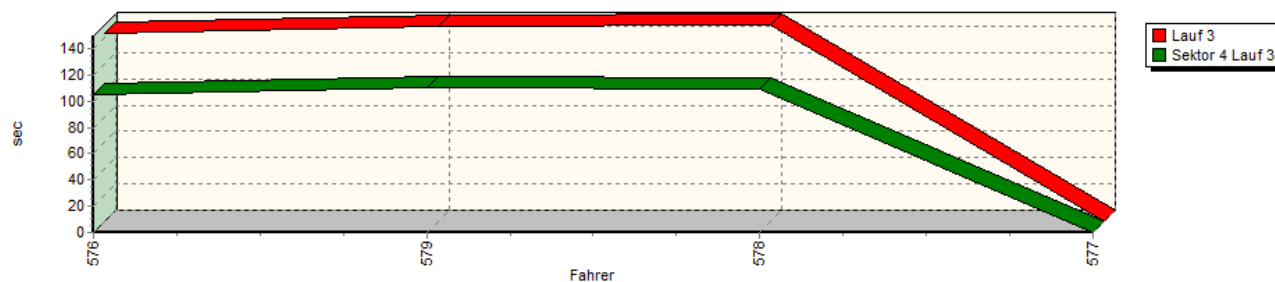
Speed-Diagramm Lauf 3



Sektor-Diagramm (Start) Lauf 3



Sektor-Diagramm (Rest) Lauf 3

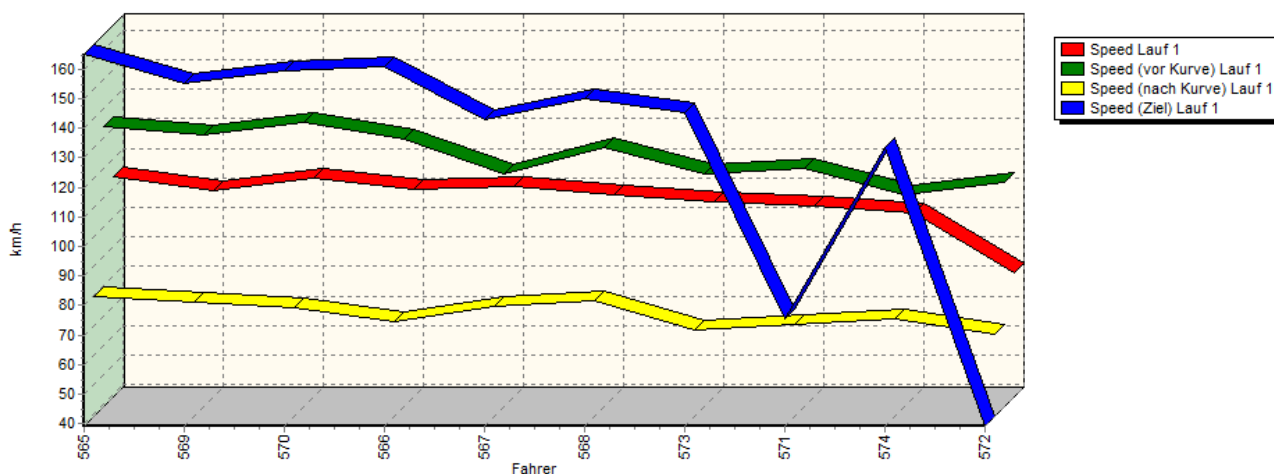


Rg.	Nr.	Startsek.	Speed vor Kurve	90°-Kurve	Speed n. K.	Sektor 3	Sektor 4	Speed Ziel	Laufzeit	Speed (Lauf)
1	576	<b>FRÖHLICH Tim</b> Renault Alpine A110								
	Lauf 1:	11.698	111,62 km/h	09.426	74,52 km/h	16.873	01:46.312	138,46 km/h	02:24.309	104,78 km/h
	Lauf 2:	11.489	112,33 km/h	09.372	74,58 km/h	16.768	01:44.366	138,46 km/h	02:21.995	106,48 km/h
	Lauf 3:	11.772	110,99 km/h	09.481	72,84 km/h	16.873	01:45.236	137,40 km/h	02:23.362	105,47 km/h

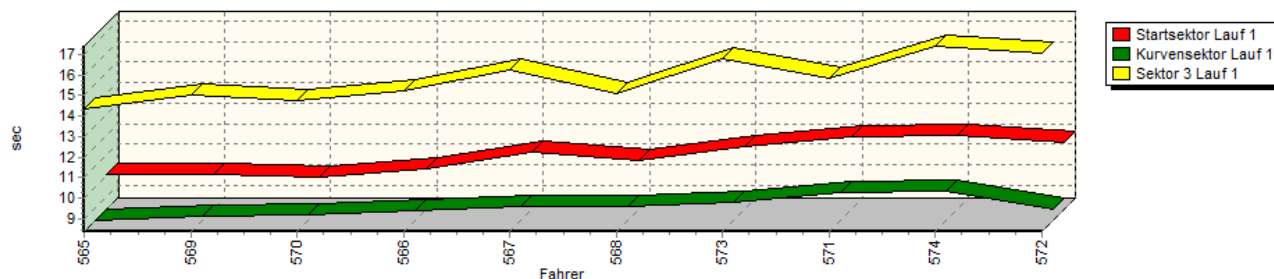
## Sektorzeiten &amp; Speeds - Gruppe A,R2,R3,F,CTC/CGT

Rg.	Nr.	Startsek.	Speed vor Kurve	90°-Kurve	Speed n. K.	Sektor 3	Sektor 4	Speed Ziel	Laufzeit	Speed (Lauf)
2	579	<b>MASLONKA Robert</b>		VW Polo						
	Lauf 1:	12.312	106,97 km/h	09.543	67,30 km/h	18.392	01:55.227	125,00 km/h	02:35.474	97,25 km/h
	Lauf 2:	12.042	107,52 km/h	08.976	68,62 km/h	18.070	01:50.858	129,50 km/h	02:29.946	100,84 km/h
	Lauf 3:	12.022	105,52 km/h	08.864	68,76 km/h	18.165	01:49.958	126,76 km/h	02:29.009	101,47 km/h
3	578	<b>GREBE Hartmut</b>		Ford Fiesta 1,4 FUN						
	Lauf 1:	12.372	105,63 km/h	09.556	64,22 km/h	18.427	01:49.478	132,35 km/h	02:29.833	100,91 km/h
	Lauf 2:	11.954	108,13 km/h	09.249	65,39 km/h	17.962	01:49.876	134,33 km/h	02:29.041	101,45 km/h
	Lauf 3:	12.060	106,75 km/h	09.288	63,06 km/h	18.611	01:49.620	134,33 km/h	02:29.579	101,08 km/h
4	577	<b>BOCH Heinz-Peter</b>		Honda Civic						
	Lauf 1:	11.939	107,82 km/h	09.905	69,34 km/h	18.063	01:53.864	135,34 km/h	02:33.771	98,33 km/h
	Lauf 2:	11.935	109,59 km/h	09.627	68,75 km/h	00.000	*	* km/h	A	* km/h
	Lauf 3:	00.000	* km/h	00.000	* km/h	00.000	*	* km/h	*	* km/h

Speed-Diagramm Lauf 1

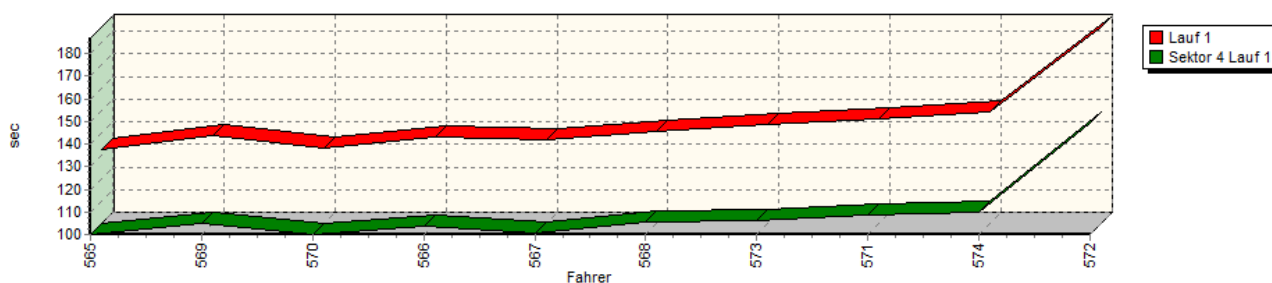


Sektor-Diagramm (Start) Lauf 1

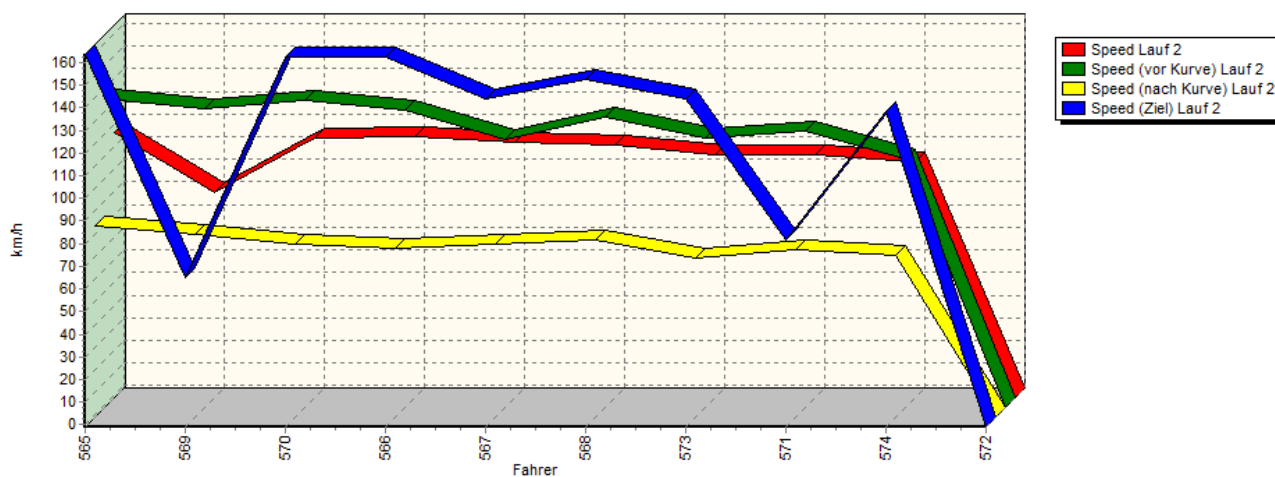


## Sektorzeiten & Speeds - Gruppe A,R2,R3,F,CTC/CGT

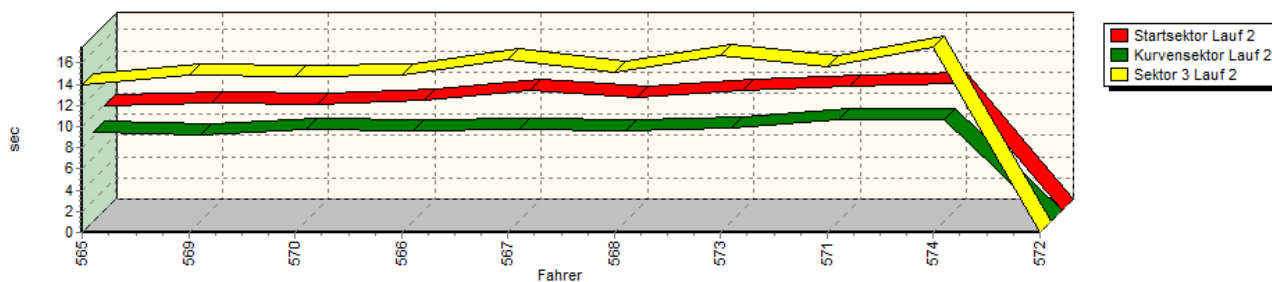
Sektor-Diagramm (Rest) Lauf 1



Speed-Diagramm Lauf 2

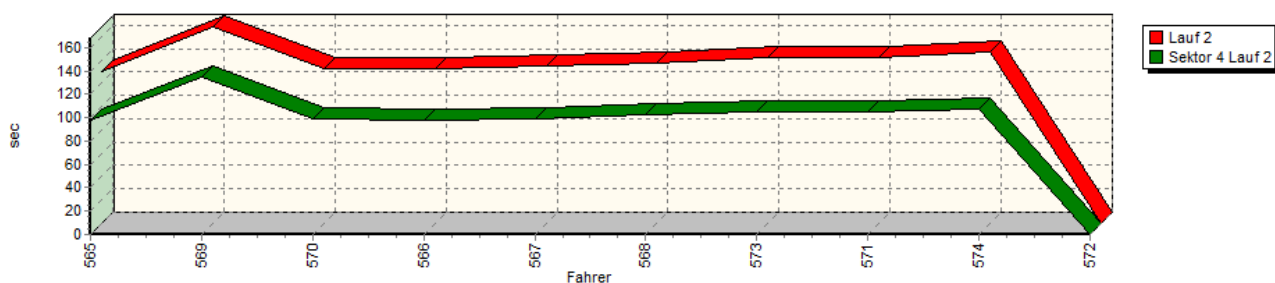


Sektor-Diagramm (Start) Lauf 2

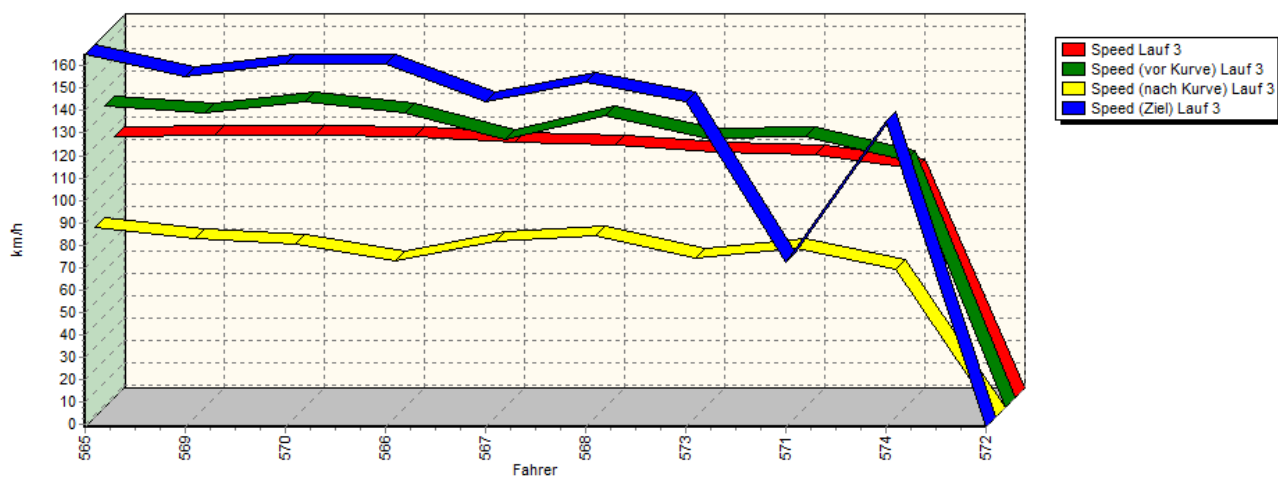


## Sektorzeiten & Speeds - Gruppe A,R2,R3,F,CTC/CGT

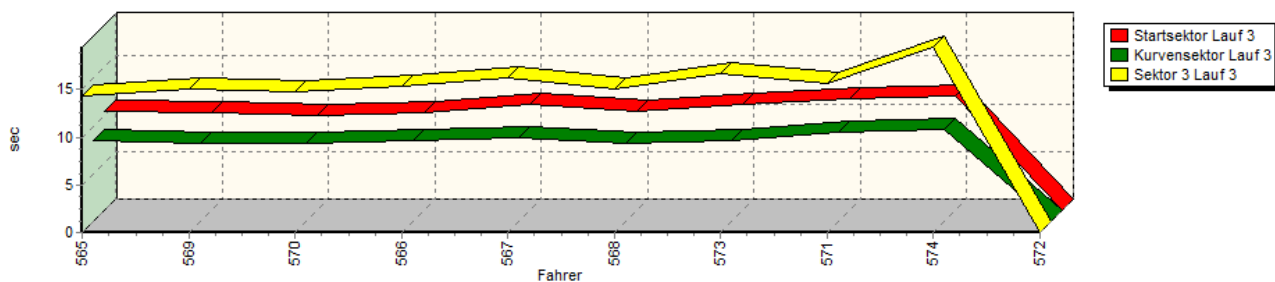
Sektor-Diagramm (Rest) Lauf 2



Speed-Diagramm Lauf 3



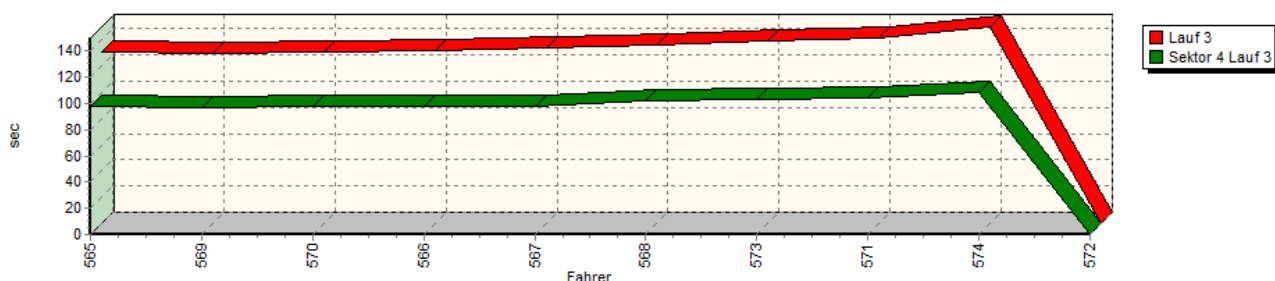
Sektor-Diagramm (Start) Lauf 3





## Sektorzeiten &amp; Speeds - Gruppe A,R2,R3,F,CTC/CGT

Sektor-Diagramm (Rest) Lauf 3



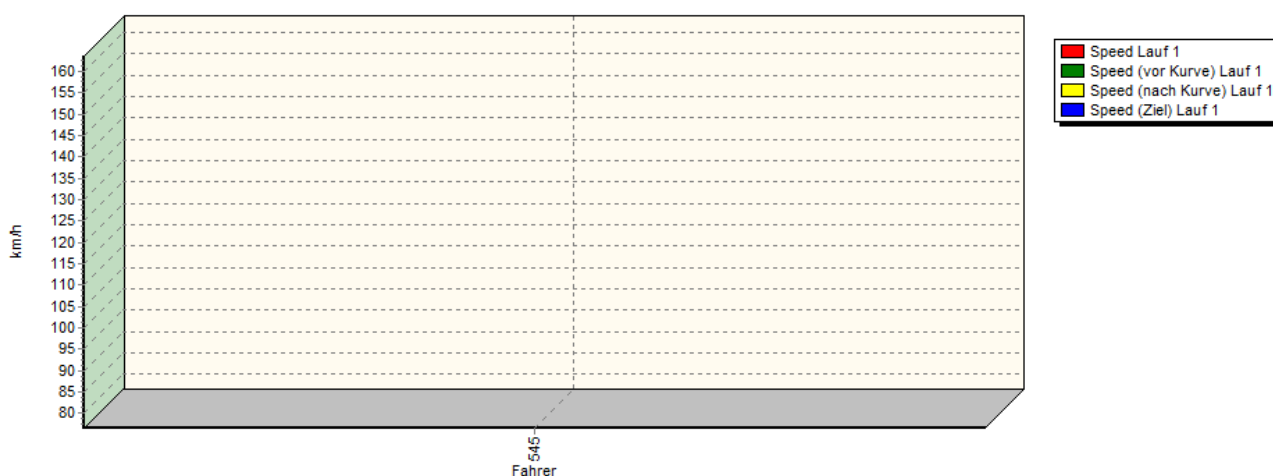
Rg.	Nr.	Startsek.	Speed vor Kurve	90°-Kurve	Speed n. K.	Sektor 3	Sektor 4	Speed Ziel	Laufzeit	Speed (Lauf)	
1	565	<b>VEIT Kevin</b>	BMW E30								
		Lauf 1:	10.075	133,79 km/h	08.371	79,89 km/h	14.377	01:39.990	165,14 km/h	02:12.813	113,84 km/h
		Lauf 2:	09.854	135,06 km/h	08.398	83,25 km/h	13.993	01:37.649	163,64 km/h	02:09.894	116,40 km/h
		Lauf 3:	10.442	133,55 km/h	08.475	83,61 km/h	14.305	01:37.922	165,14 km/h	02:11.144	115,29 km/h
2	569	<b>ORTH Patrick</b>	VW Golf GTI								
		Lauf 1:	10.052	131,09 km/h	08.559	77,83 km/h	15.001	01:45.028	155,17 km/h	02:18.640	109,06 km/h
		Lauf 2:	10.137	131,18 km/h	08.126	80,06 km/h	14.889	02:15.099	64,75 km/h	02:48.251	89,87 km/h
		Lauf 3:	10.194	130,13 km/h	08.147	78,38 km/h	15.003	01:36.720	155,17 km/h	02:10.064	116,25 km/h
3	570	<b>NEU Kai</b>	Ford Focus ST170								
		Lauf 1:	09.948	135,54 km/h	08.642	75,83 km/h	14.748	01:40.014	159,29 km/h	02:13.352	113,38 km/h
		Lauf 2:	10.022	134,83 km/h	08.717	75,49 km/h	14.771	01:39.379	162,16 km/h	02:12.889	113,78 km/h
		Lauf 3:	10.003	135,54 km/h	08.241	76,35 km/h	14.690	01:37.520	160,71 km/h	02:10.454	115,90 km/h
4	566	<b>ORTH Ralf</b>	BMW E30								
		Lauf 1:	10.353	129,58 km/h	08.868	71,08 km/h	15.255	01:43.787	160,71 km/h	02:18.263	109,36 km/h
		Lauf 2:	10.336	130,42 km/h	08.507	73,48 km/h	14.886	01:38.398	162,16 km/h	02:12.127	114,43 km/h
		Lauf 3:	10.274	130,26 km/h	08.461	68,78 km/h	15.307	01:37.350	160,71 km/h	02:11.392	115,08 km/h
5	567	<b>REDER Alexander</b>	BMW 318i E36								
		Lauf 1:	11.156	118,02 km/h	09.057	76,54 km/h	16.234	01:40.748	142,86 km/h	02:17.195	110,21 km/h
		Lauf 2:	11.336	117,47 km/h	08.711	75,49 km/h	16.310	01:38.890	144,00 km/h	02:15.247	111,80 km/h
		Lauf 3:	11.172	118,54 km/h	08.715	77,44 km/h	16.187	01:38.130	144,00 km/h	02:14.204	112,66 km/h
6	568	<b>WOLK Alexander</b>	VW Golf III 16V								
		Lauf 1:	10.725	126,87 km/h	09.048	78,53 km/h	15.095	01:45.567	150,00 km/h	02:20.435	107,67 km/h
		Lauf 2:	10.627	127,39 km/h	08.530	77,56 km/h	15.066	01:42.694	152,54 km/h	02:16.917	110,43 km/h
		Lauf 3:	10.312	129,31 km/h	08.228	80,01 km/h	15.069	01:42.036	152,54 km/h	02:15.645	111,47 km/h
7	573	<b>ZUFALL Erik</b>	Opel Astra F CC								
		Lauf 1:	11.409	117,85 km/h	09.230	68,49 km/h	16.792	01:46.163	145,16 km/h	02:23.594	105,30 km/h
		Lauf 2:	11.307	118,20 km/h	08.818	69,30 km/h	16.686	01:45.190	144,00 km/h	02:22.001	106,48 km/h
		Lauf 3:	11.097	118,95 km/h	08.528	70,20 km/h	16.726	01:43.169	144,00 km/h	02:19.520	108,37 km/h
8	571	<b>BODNER Christian</b>	BMW 320								
		Lauf 1:	11.893	119,61 km/h	09.704	70,51 km/h	15.805	01:48.528	75,63 km/h	02:25.930	103,61 km/h
		Lauf 2:	11.715	121,23 km/h	09.658	73,27 km/h	15.605	01:45.208	81,45 km/h	02:22.186	106,34 km/h
		Lauf 3:	11.688	119,53 km/h	09.403	74,29 km/h	15.701	01:44.350	72,58 km/h	02:21.142	107,13 km/h
9	574	<b>GÜRTZGEN Friedhelm</b>	BMW Compact 318Ti								
		Lauf 1:	11.957	110,67 km/h	09.794	72,36 km/h	17.399	01:50.085	133,33 km/h	02:29.235	101,32 km/h
		Lauf 2:	11.994	108,79 km/h	09.547	70,32 km/h	17.486	01:47.544	138,46 km/h	02:26.571	103,16 km/h
		Lauf 3:	11.991	109,40 km/h	09.678	64,95 km/h	19.429	01:48.816	135,34 km/h	02:29.914	100,86 km/h



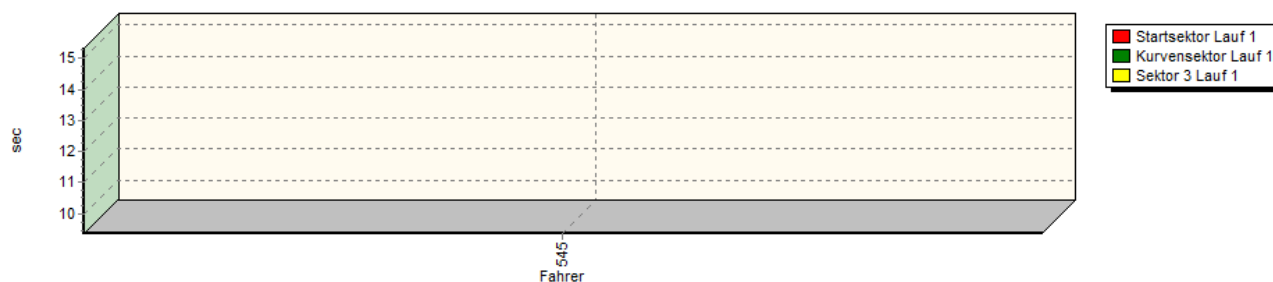
## Sektorzeiten & Speeds - Gruppe A,R2,R3,F,CTC/CGT

Rg.	Nr.		Startsek.	Speed vor Kurve	90°-Kurve	Speed n. K.	Sektor 3	Sektor 4	Speed Ziel	Laufzeit	Speed (Lauf)
10	572	<b>HEß Mario</b>	Opel Astra GSI								
		Lauf 1:	11.642	114,92 km/h	08.891	67,15 km/h	17.068	02:29.293	39,13 km/h	03:06.894	80,90 km/h
		Lauf 2:	00.000	* km/h	00.000	* km/h	00.000	*	* km/h	*	* km/h
		Lauf 3:	00.000	* km/h	00.000	* km/h	00.000	*	* km/h	*	* km/h

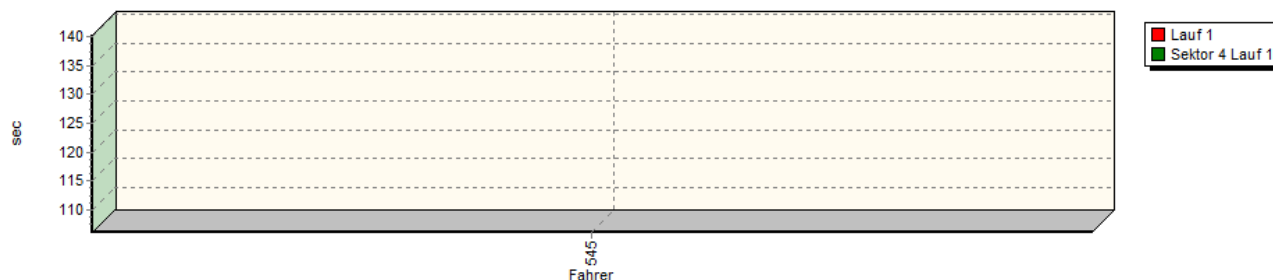
Speed-Diagramm Lauf 1



Sektor-Diagramm (Start) Lauf 1



Sektor-Diagramm (Rest) Lauf 1

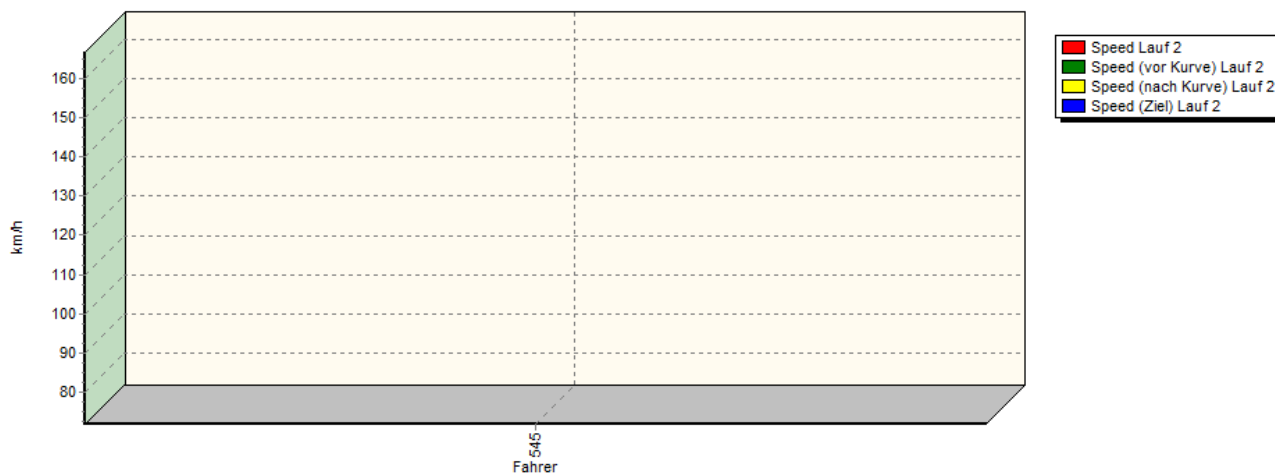




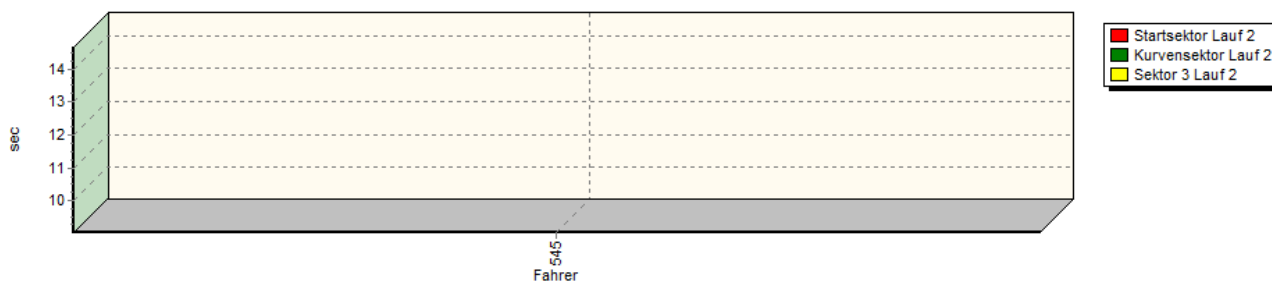


## Sektorzeiten & Speeds - Gruppe A,R2,R3,F,CTC/CGT

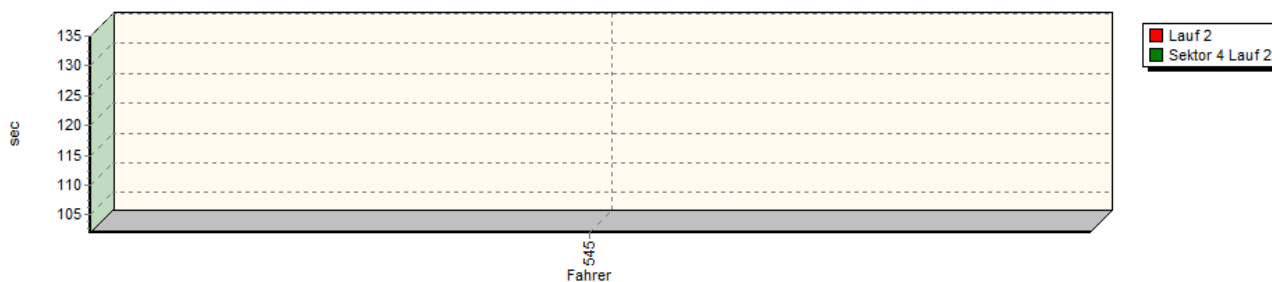
Speed-Diagramm Lauf 2



Sektor-Diagramm (Start) Lauf 2

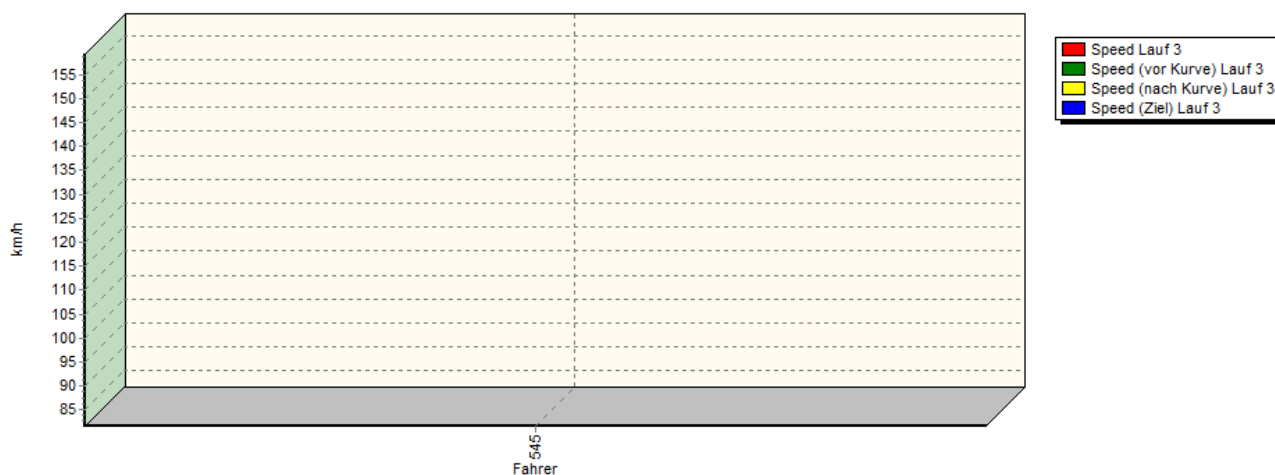


Sektor-Diagramm (Rest) Lauf 2

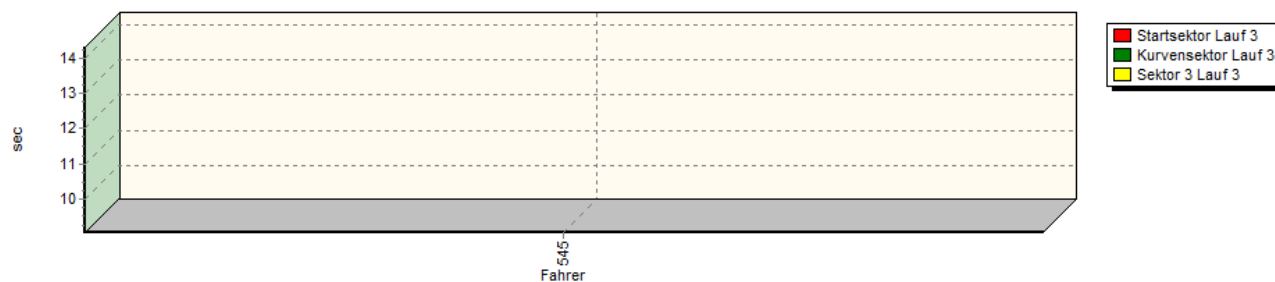


## Sektorzeiten &amp; Speeds - Gruppe A,R2,R3,F,CTC/CGT

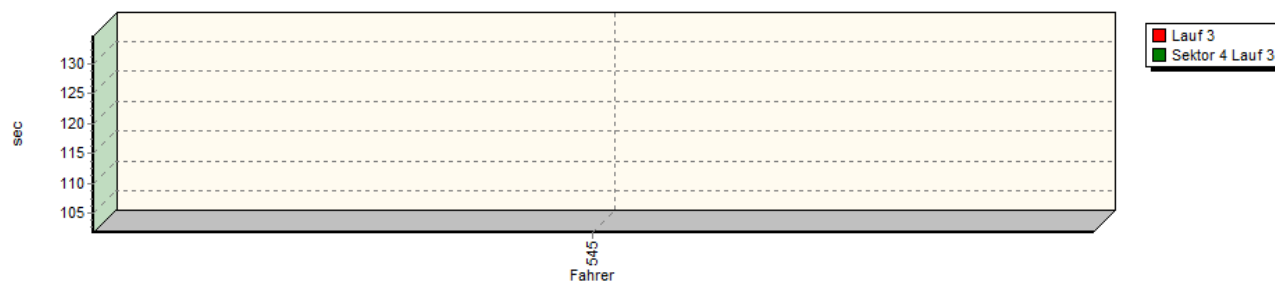
Speed-Diagramm Lauf 3



Sektor-Diagramm (Start) Lauf 3



Sektor-Diagramm (Rest) Lauf 3



Rg.	Nr.	Startsek.	Speed vor Kurve	90°-Kurve	Speed n. K.	Sektor 3	Sektor 4	Speed Ziel	Laufzeit	Speed (Lauf)
1	545	<b>VOGT Albert</b>		Subaru Impreza						
	Lauf 1:	09.414	136,27 km/h	09.348	76,50 km/h	15.332	01:46.119	163,64 km/h	02:20.213	107,84 km/h
	Lauf 2:	09.260	138,18 km/h	09.034	71,82 km/h	14.660	01:42.060	166,67 km/h	02:15.014	111,99 km/h
	Lauf 3:	09.449	137,30 km/h	09.055	81,57 km/h	14.304	01:41.842	159,29 km/h	02:14.650	112,29 km/h