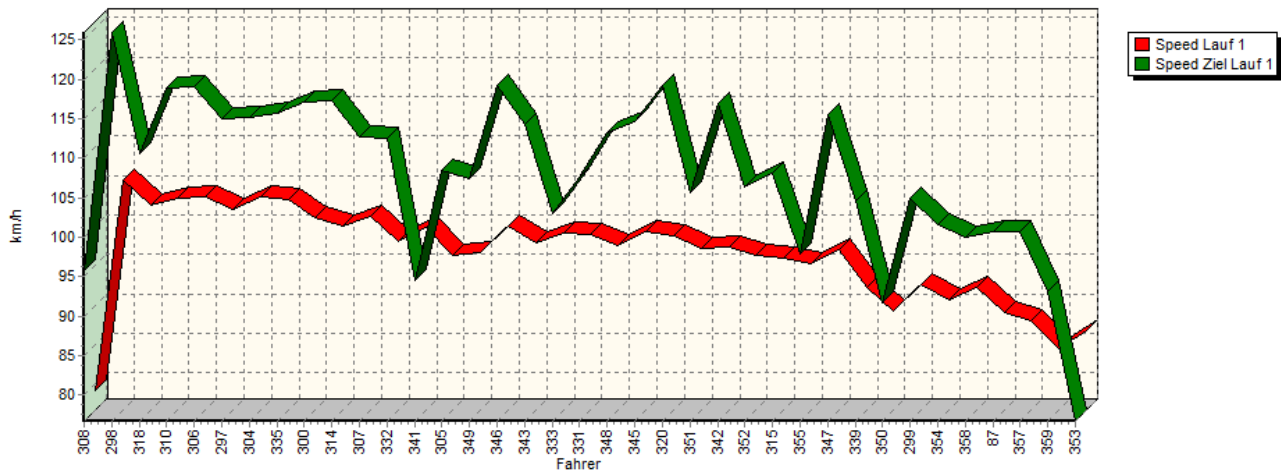
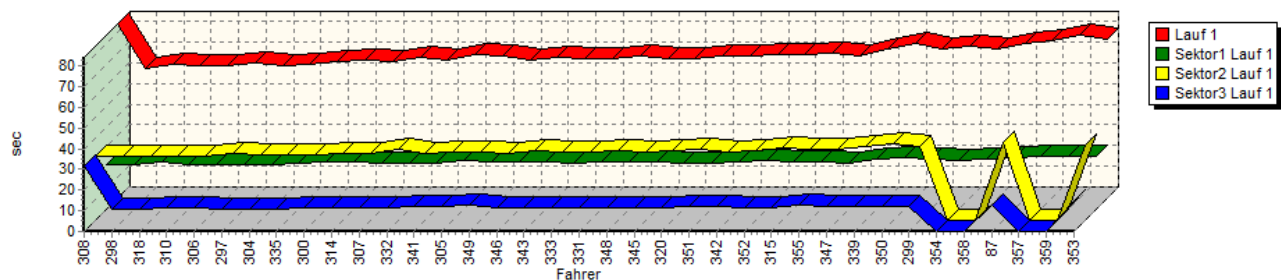


Sektorzeiten & Speeds - Groupe E1+H/FS (DMSB) Classe 23: +1600-2000 ccm

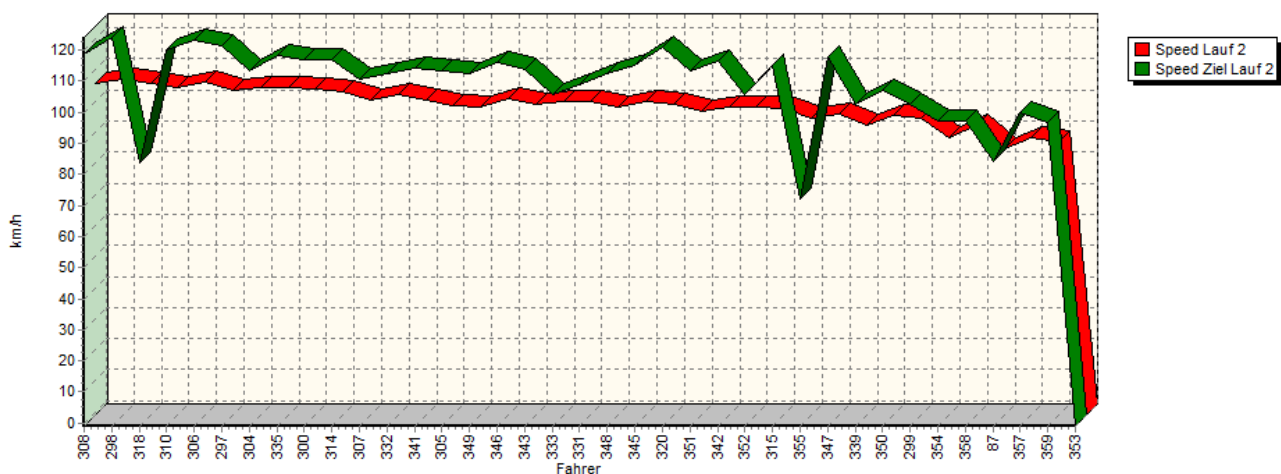
Speed-Diagramm Lauf 1



Sektor-Diagramm (Rest) Lauf 1

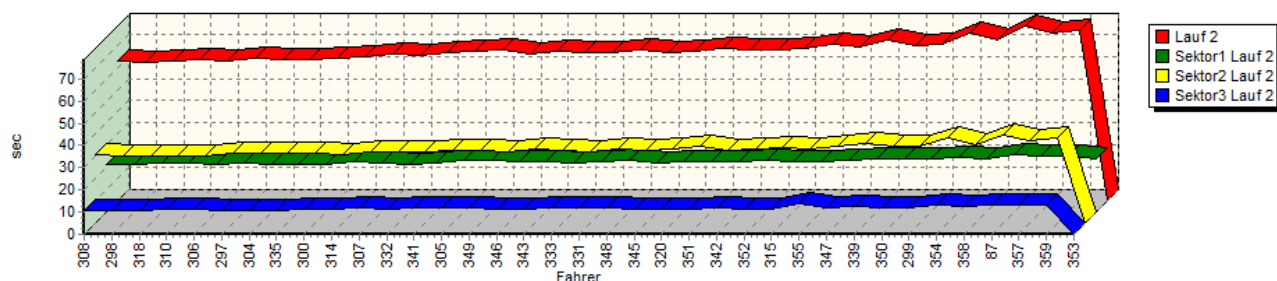


Speed-Diagramm Lauf 2

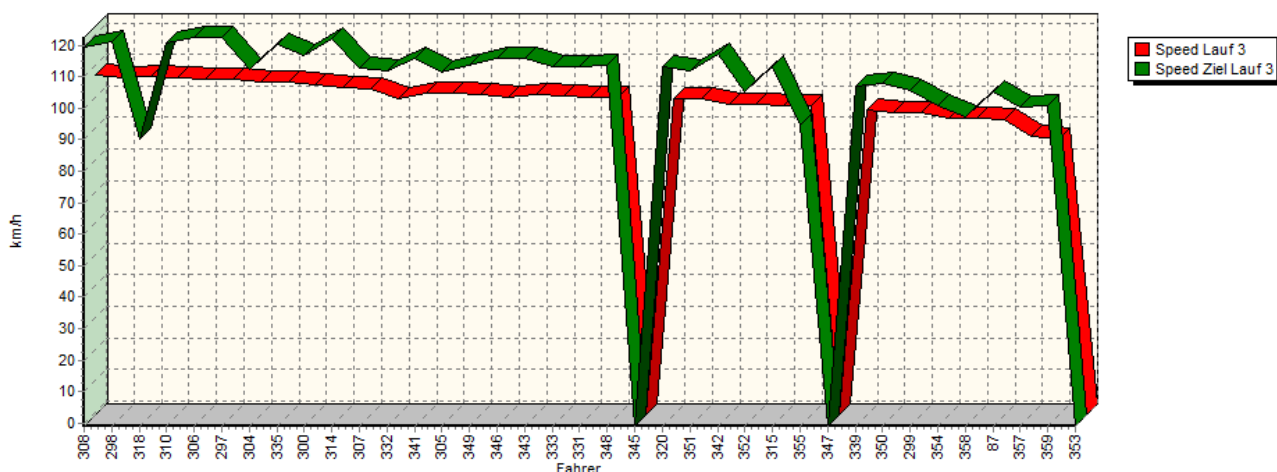


Sektorzeiten & Speeds - Groupe E1+H/FS (DMSB) Classe 23: +1600-2000 ccm

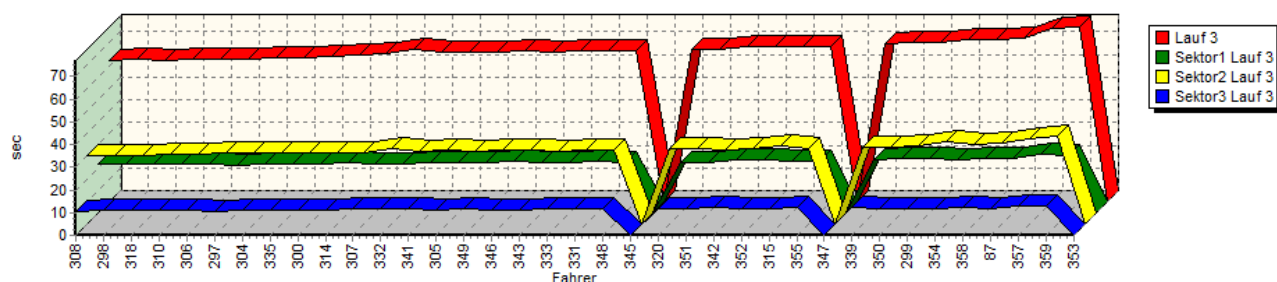
Sektor-Diagramm (Rest) Lauf 2



Speed-Diagramm Lauf 3



Sektor-Diagramm (Rest) Lauf 3



Rg.	Nr.	Sektor 1	Sektor 2	Sektor 3	Speed Ziel	Laufzeit	Speed (Lauf)	
1	308	ORTH Patrick		BMW Frank E30 320is				
		Lauf 1:	00:21.746	00:30.776	00:31.630	95,73 km/h	01:24.152	79,14 km/h
		Lauf 2:	00:21.432	00:30.580	00:10.995	118,57 km/h	01:03.007	105,70 km/h
		Lauf 3:	00:21.349	00:30.299	00:10.655	119,33 km/h	01:02.303	106,90 km/h



European Hill Race

Bergrennen Eschdorf

6. - 8. Mai 2016

Luxemburger Bergmeisterschaft für Tourenwagen 2016

Luxemburger Bergmeisterschaft für Sportwagen 2016

Deutsche Bergmeisterschaft 2016 / DMSB Berg-Cup 2016

KW Berg-Cup 2016 / NSU Bergpokal 2016 im KW Berg-Cup



Sektorzeiten & Speeds - Groupe E1+H/FS (DMSB) Classe 23: +1600-2000 ccm

Rg.	Nr.	Sektor 1	Sektor 2	Sektor 3	Speed Ziel	Laufzeit	Speed (Lauf)
2	298	PISANO Egidio	VW Minichberger-Golf STW 16V				
		Lauf 1: 00:21.548	00:30.781	00:10.594	125,96 km/h	01:02.923	105,84 km/h
		Lauf 2: 00:21.416	00:30.042	00:10.851	124,12 km/h	01:02.309	106,89 km/h
		Lauf 3: 00:21.277	00:30.449	00:11.064	121,38 km/h	01:02.790	106,07 km/h
3	318	WIEBE André	Renault Williams Wiebe Laguna				
		Lauf 1: 00:22.754	00:31.134	00:10.977	110,52 km/h	01:04.865	102,68 km/h
		Lauf 2: 00:21.922	00:30.235	00:10.833	83,72 km/h	01:02.990	105,73 km/h
		Lauf 3: 00:21.633	00:29.923	00:10.876	90,41 km/h	01:02.432	106,68 km/h
4	310	FINK Marco	BMW 320 ST WTCC				
		Lauf 1: 00:21.870	00:31.026	00:11.384	118,95 km/h	01:04.280	103,61 km/h
		Lauf 2: 00:22.175	00:30.454	00:11.075	120,01 km/h	01:03.704	104,55 km/h
		Lauf 3: 00:21.284	00:30.585	00:10.852	120,81 km/h	01:02.721	106,19 km/h
5	306	SCHÖNBORN Rainer	VW Golf I 16V				
		Lauf 1: 00:21.717	00:31.099	00:11.389	119,07 km/h	01:04.205	103,73 km/h
		Lauf 2: 00:21.284	00:30.360	00:11.161	123,04 km/h	01:02.805	106,04 km/h
		Lauf 3: 00:21.304	00:30.607	00:11.047	122,32 km/h	01:02.958	105,79 km/h
6	297	BÜRKI Martin	BMW 318i E36 STW				
		Lauf 1: 00:21.809	00:32.390	00:11.034	114,99 km/h	01:05.233	102,10 km/h
		Lauf 2: 00:21.920	00:31.478	00:10.832	121,40 km/h	01:04.230	103,69 km/h
		Lauf 3: 00:21.091	00:31.212	00:10.762	122,54 km/h	01:03.065	105,61 km/h
7	304	DÜMLER Christian	VW Golf II 8V				
		Lauf 1: 00:21.627	00:31.744	00:10.834	115,23 km/h	01:04.205	103,73 km/h
		Lauf 2: 00:21.586	00:31.235	00:10.944	113,55 km/h	01:03.765	104,45 km/h
		Lauf 3: 00:21.538	00:31.176	00:10.902	112,57 km/h	01:03.616	104,69 km/h
8	335	RAUCH Michael	Opel Briegel Kadett 8V				
		Lauf 1: 00:21.900	00:31.640	00:10.943	115,73 km/h	01:04.483	103,28 km/h
		Lauf 2: 00:21.275	00:31.661	00:10.898	118,22 km/h	01:03.834	104,33 km/h
		Lauf 3: 00:21.552	00:31.326	00:10.773	120,52 km/h	01:03.651	104,63 km/h
9	300	AUER Christian	BMW 2002 8V				
		Lauf 1: 00:22.867	00:31.698	00:11.288	117,04 km/h	01:05.853	101,13 km/h
		Lauf 2: 00:21.576	00:31.251	00:11.161	116,83 km/h	01:03.988	104,08 km/h
		Lauf 3: 00:21.805	00:31.090	00:11.171	116,68 km/h	01:04.066	103,95 km/h
10	314	WIEBE Hans-Peter	Renault Williams Wiebe Laguna				
		Lauf 1: 00:22.844	00:32.187	00:11.560	117,38 km/h	01:06.591	100,01 km/h
		Lauf 2: 00:22.632	00:30.668	00:11.251	116,80 km/h	01:04.551	103,17 km/h
		Lauf 3: 00:22.263	00:31.118	00:11.167	122,06 km/h	01:04.548	103,18 km/h
11	307	WEBER Jens	Opel Kadett C 16V				
		Lauf 1: 00:22.112	00:32.057	00:11.601	112,64 km/h	01:05.770	101,26 km/h
		Lauf 2: 00:22.308	00:32.058	00:11.890	110,59 km/h	01:06.256	100,52 km/h
		Lauf 3: 00:21.841	00:31.681	00:11.465	112,97 km/h	01:04.987	102,48 km/h
12	332	BAYER Daniel	Opel Kadett C Coupé				
		Lauf 1: 00:22.124	00:34.050	00:11.778	112,52 km/h	01:07.952	98,01 km/h
		Lauf 2: 00:21.653	00:32.295	00:11.337	112,50 km/h	01:05.285	102,01 km/h
		Lauf 3: 00:21.808	00:33.380	00:11.659	111,83 km/h	01:06.847	99,63 km/h
13	341	WIEBE Horst	Renault Megane Maxi				
		Lauf 1: 00:22.295	00:32.602	00:11.869	94,49 km/h	01:06.766	99,75 km/h
		Lauf 2: 00:22.084	00:32.380	00:12.032	114,47 km/h	01:06.496	100,16 km/h
		Lauf 3: 00:21.968	00:32.160	00:11.755	115,99 km/h	01:05.883	101,09 km/h



European Hill Race

Bergrennen Eschdorf

6. - 8. Mai 2016

Luxemburger Bergmeisterschaft für Tourenwagen 2016

Luxemburger Bergmeisterschaft für Sportwagen 2016

Deutsche Bergmeisterschaft 2016 / DMSB Berg-Cup 2016

KW Berg-Cup 2016 / NSU Bergpokal 2016 im KW Berg-Cup



Sektorzeiten & Speeds - Groupe E1+H/FS (DMSB) Classe 23: +1600-2000 ccm

Rg.	Nr.	Sektor 1	Sektor 2	Sektor 3	Speed Ziel	Laufzeit	Speed (Lauf)	
14	305	FLIK Thomas		Renault Megane Cup				
		Lauf 1:	00:23.813	00:33.254	00:12.115	108,44 km/h	01:09.182	96,27 km/h
		Lauf 2:	00:23.044	00:32.735	00:11.816	113,29 km/h	01:07.595	98,53 km/h
		Lauf 3:	00:22.131	00:32.410	00:11.346	111,52 km/h	01:05.887	101,08 km/h
15	349	SCHWARZ Thomas		Renault Clio 2 Cup				
		Lauf 1:	00:23.181	00:33.124	00:12.572	107,35 km/h	01:08.877	96,69 km/h
		Lauf 2:	00:23.176	00:32.570	00:12.223	112,51 km/h	01:07.969	97,98 km/h
		Lauf 3:	00:22.450	00:32.109	00:11.482	113,58 km/h	01:06.041	100,85 km/h
16	346	DE KERCHOVE Michel		Peugeot 406 STW				
		Lauf 1:	00:23.044	00:32.192	00:11.348	119,29 km/h	01:06.584	100,02 km/h
		Lauf 2:	00:22.754	00:31.984	00:11.342	116,18 km/h	01:06.080	100,79 km/h
		Lauf 3:	00:22.821	00:32.352	00:11.381	116,08 km/h	01:06.554	100,07 km/h
17	343	NOIRAT Jeremy		VW Golf 16V				
		Lauf 1:	00:22.885	00:33.578	00:11.573	114,23 km/h	01:08.036	97,89 km/h
		Lauf 2:	00:22.553	00:33.129	00:11.488	113,69 km/h	01:07.170	99,15 km/h
		Lauf 3:	00:22.315	00:32.549	00:11.254	116,06 km/h	01:06.118	100,73 km/h
18	333	HATEZIC Johann		Opel Ascona B Frank 8V				
		Lauf 1:	00:22.528	00:32.896	00:11.731	103,00 km/h	01:07.155	99,17 km/h
		Lauf 2:	00:22.270	00:32.593	00:11.875	105,66 km/h	01:06.738	99,79 km/h
		Lauf 3:	00:22.259	00:32.275	00:11.849	113,33 km/h	01:06.383	100,33 km/h
19	331	PLEIER Alexander		Opel Kadett C Coupé				
		Lauf 1:	00:22.942	00:32.831	00:11.591	107,67 km/h	01:07.364	98,87 km/h
		Lauf 2:	00:22.591	00:32.215	00:11.886	109,02 km/h	01:06.692	99,86 km/h
		Lauf 3:	00:22.855	00:32.369	00:11.477	113,08 km/h	01:06.701	99,85 km/h
20	348	VILLOZ Hervé		Renault Clio RS Evo				
		Lauf 1:	00:23.186	00:33.534	00:11.629	113,17 km/h	01:08.349	97,44 km/h
		Lauf 2:	00:23.012	00:33.122	00:11.858	112,64 km/h	01:07.992	97,95 km/h
		Lauf 3:	00:22.456	00:32.686	00:11.561	113,72 km/h	01:06.703	99,85 km/h
21	345	SCHWILDEN Eric		Peugeot 205 GTI Targez				
		Lauf 1:	00:22.760	00:32.776	00:11.538	114,72 km/h	01:07.074	99,29 km/h
		Lauf 2:	00:22.279	00:32.930	00:11.549	115,29 km/h	01:06.758	99,76 km/h
		Lauf 3:	*	*	*	* km/h	*	* km/h
22	320	RUWE Mario		VW Brügge Golf GTI 16V				
		Lauf 1:	00:22.189	00:33.880	00:11.422	119,17 km/h	01:07.491	98,68 km/h
		Lauf 2:	00:22.368	00:33.608	00:11.363	120,79 km/h	01:07.339	98,90 km/h
		Lauf 3:	00:22.180	00:33.298	00:11.389	113,13 km/h	01:06.867	99,60 km/h
23	351	DEFESCHE Benjamin		VW Scirocco				
		Lauf 1:	00:22.468	00:34.033	00:12.015	105,73 km/h	01:08.516	97,20 km/h
		Lauf 2:	00:22.486	00:34.572	00:11.629	113,27 km/h	01:08.687	96,96 km/h
		Lauf 3:	00:22.131	00:33.186	00:11.628	112,06 km/h	01:06.945	99,49 km/h
24	342	VALLAT Patrick		VW Golf				
		Lauf 1:	00:23.149	00:33.253	00:12.043	117,01 km/h	01:08.445	97,30 km/h
		Lauf 2:	00:22.800	00:32.937	00:12.079	116,50 km/h	01:07.816	98,21 km/h
		Lauf 3:	00:23.084	00:32.822	00:12.139	117,32 km/h	01:08.045	97,88 km/h
25	352	WEBER Michael		Renault Clio 3 Cup				
		Lauf 1:	00:23.746	00:33.996	00:11.404	106,39 km/h	01:09.146	96,32 km/h
		Lauf 2:	00:23.093	00:33.323	00:11.557	105,95 km/h	01:07.973	97,98 km/h
		Lauf 3:	00:23.222	00:33.439	00:11.514	105,48 km/h	01:08.175	97,69 km/h



European Hill Race

Bergrennen Eschdorf

6. - 8. Mai 2016

Luxemburger Bergmeisterschaft für Tourenwagen 2016

Luxemburger Bergmeisterschaft für Sportwagen 2016

Deutsche Bergmeisterschaft 2016 / DMSB Berg-Cup 2016

KW Berg-Cup 2016 / NSU Bergpokal 2016 im KW Berg-Cup



Sektorzeiten & Speeds - Groupe E1+H/FS (DMSB) Classe 23: +1600-2000 ccm

Rg.	Nr.	Sektor 1		Sektor 2	Sektor 3	Speed Ziel	Laufzeit	Speed (Lauf)
26	315	LADAGE Uwe		BMW 320 ETCC/WTCC				
		Lauf 1:	00:22.859	00:35.010	00:11.560	108,15 km/h	01:09.429	95,93 km/h
		Lauf 2:	00:22.909	00:34.065	00:11.306	115,26 km/h	01:08.280	97,54 km/h
		Lauf 3:	00:22.555	00:34.318	00:11.571	113,33 km/h	01:08.444	97,31 km/h
27	355	SOISSON Claude		Opel Manta B				
		Lauf 1:	00:22.778	00:34.452	00:12.716	97,89 km/h	01:09.946	95,22 km/h
		Lauf 2:	00:22.875	00:33.493	00:14.014	71,97 km/h	01:10.382	94,63 km/h
		Lauf 3:	00:22.511	00:33.482	00:12.515	94,59 km/h	01:08.508	97,22 km/h
28	347	EGGERTSWYLER Thierry		Peugeot 405				
		Lauf 1:	00:22.458	00:34.380	00:11.787	115,52 km/h	01:08.625	97,05 km/h
		Lauf 2:	00:22.970	00:34.483	00:11.860	117,70 km/h	01:09.313	96,09 km/h
		Lauf 3:	*	*	*	* km/h	A	* km/h
29	339	FISCHER Marc		Opel Kadett C Coupé 8V				
		Lauf 1:	00:24.117	00:35.792	00:12.312	104,65 km/h	01:12.221	92,22 km/h
		Lauf 2:	00:23.761	00:36.035	00:12.364	102,81 km/h	01:12.160	92,30 km/h
		Lauf 3:	00:23.477	00:33.956	00:12.082	107,03 km/h	01:09.515	95,81 km/h
30	350	LEJEUNE Eric		Peugeot 306 S16				
		Lauf 1:	00:25.234	00:36.993	00:12.372	91,69 km/h	01:14.599	89,28 km/h
		Lauf 2:	00:23.760	00:34.321	00:11.777	107,18 km/h	01:09.858	95,34 km/h
		Lauf 3:	00:24.185	00:34.016	00:11.838	107,81 km/h	01:10.039	95,09 km/h
31	299	BLÄSIUS Manfred		BMW E21 320i				
		Lauf 1:	00:23.950	00:35.708	00:12.332	105,01 km/h	01:11.990	92,51 km/h
		Lauf 2:	00:23.682	00:34.607	00:12.149	102,74 km/h	01:10.438	94,55 km/h
		Lauf 3:	00:23.711	00:34.564	00:11.904	105,50 km/h	01:10.179	94,90 km/h
32	354	CIUCA Romain		Opel Kadett C Limo				
		Lauf 1:	00:23.397	*	*	101,51 km/h	01:13.469	90,65 km/h
		Lauf 2:	00:24.404	00:38.193	00:12.924	97,19 km/h	01:15.521	88,19 km/h
		Lauf 3:	00:23.405	00:36.013	00:11.807	101,00 km/h	01:11.225	93,51 km/h
33	358	SIMON David		Peugeot 206				
		Lauf 1:	00:24.015	*	*	99,97 km/h	01:12.243	92,19 km/h
		Lauf 2:	00:24.114	00:35.316	00:12.650	97,05 km/h	01:12.080	92,40 km/h
		Lauf 3:	00:23.869	00:35.089	00:12.567	97,15 km/h	01:11.525	93,11 km/h
34	87	MOREAU Bastien		Renault Clio 3 RS				
		Lauf 1:	00:24.913	00:37.501	00:12.455	100,72 km/h	01:14.869	88,96 km/h
		Lauf 2:	00:26.058	00:39.604	00:13.001	84,10 km/h	01:18.663	84,67 km/h
		Lauf 3:	00:23.932	00:35.921	00:11.929	105,12 km/h	01:11.782	92,78 km/h
35	357	BERCHEM Claude		VW Golf II GTI 16V				
		Lauf 1:	00:25.338	*	*	100,62 km/h	01:15.778	87,89 km/h
		Lauf 2:	00:25.128	00:37.233	00:13.172	100,09 km/h	01:15.533	88,17 km/h
		Lauf 3:	00:25.639	00:37.389	00:13.079	100,28 km/h	01:16.107	87,51 km/h
36	359	BECKER Ivana		Renault Clio Williams				
		Lauf 1:	00:25.902	*	*	93,04 km/h	01:18.923	84,39 km/h
		Lauf 2:	00:25.083	00:38.079	00:13.320	96,90 km/h	01:16.482	87,08 km/h
		Lauf 3:	00:25.173	00:38.612	00:13.155	101,02 km/h	01:16.940	86,56 km/h
37	353	GERARD Jacques		VW Scirocco FSI 53b				
		Lauf 1:	00:25.896	00:36.312	00:14.555	76,67 km/h	01:16.763	86,76 km/h
		Lauf 2:	00:24.125	*	*	* km/h	A	* km/h
		Lauf 3:	*	*	*	* km/h	*	* km/h