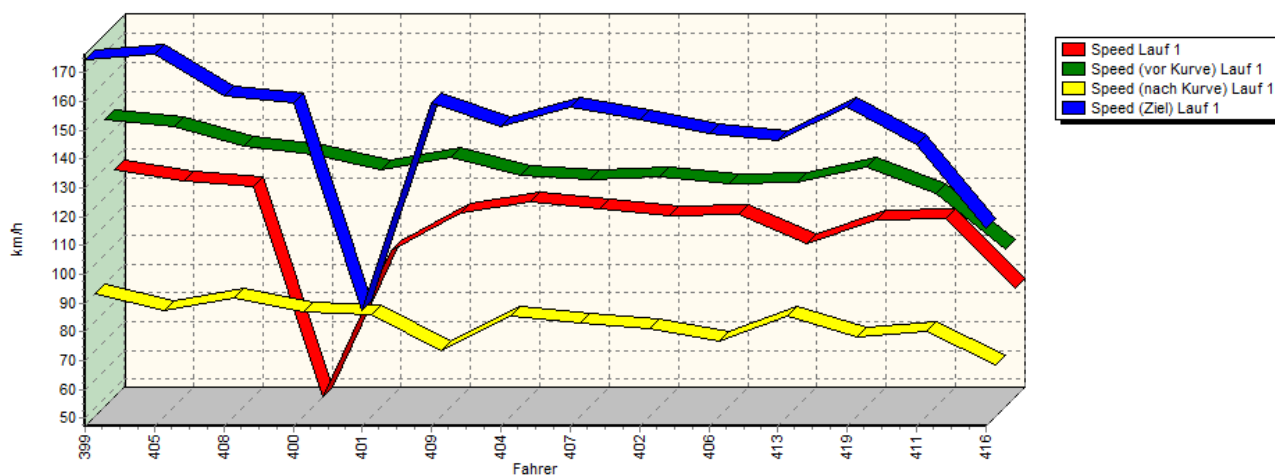
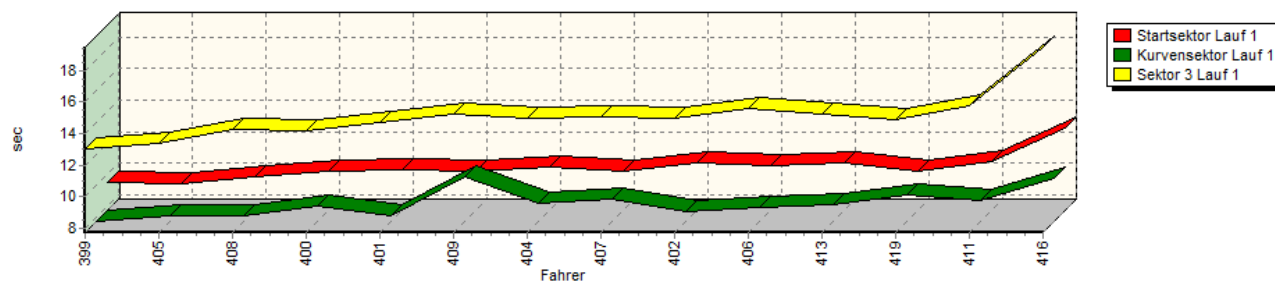


**Sektorzeiten & Speeds - Gruppe E1-FIA,E1-Berg,H,CTC/CGT bis 1400 ccm - Klasse 18**

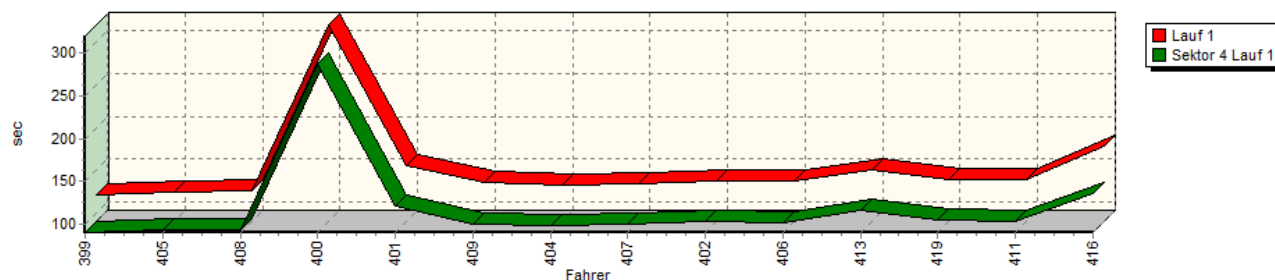
**Speed-Diagramm Lauf 1**



**Sektor-Diagramm (Start) Lauf 1**

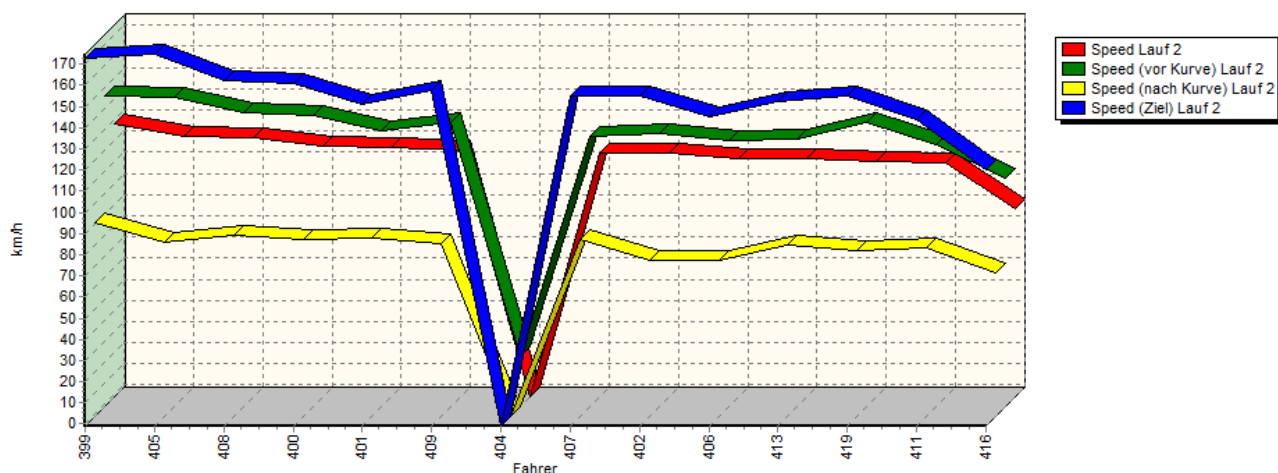


**Sektor-Diagramm (Rest) Lauf 1**

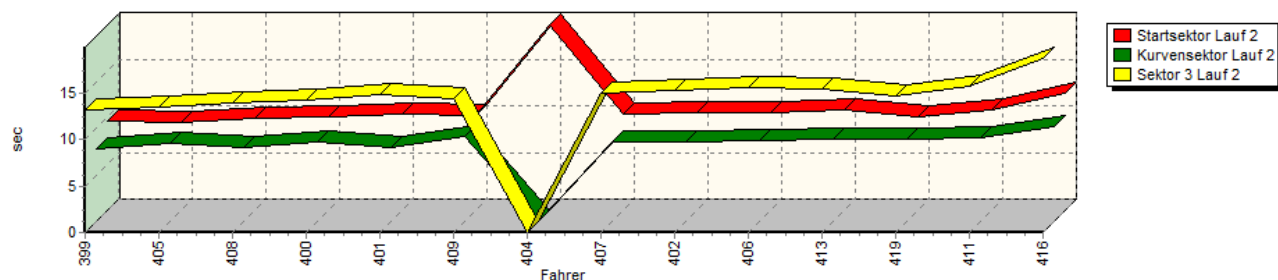


**Sektorzeiten & Speeds - Gruppe E1-FIA,E1-Berg,H,CTC/CGT bis 1400 ccm - Klasse 18**

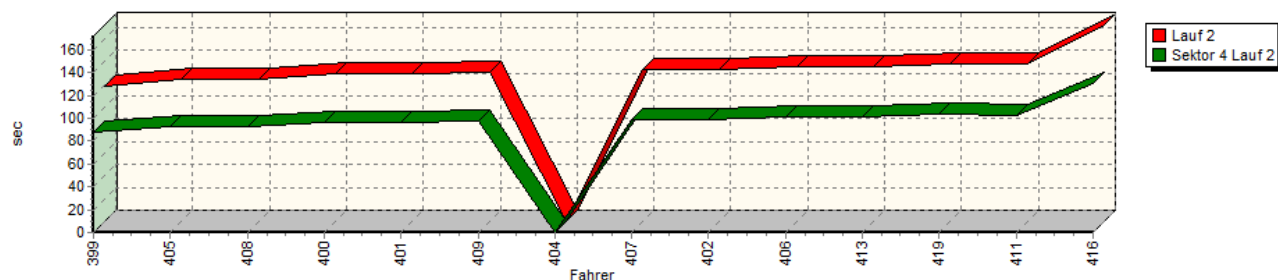
**Speed-Diagramm Lauf 2**



**Sektor-Diagramm (Start) Lauf 2**

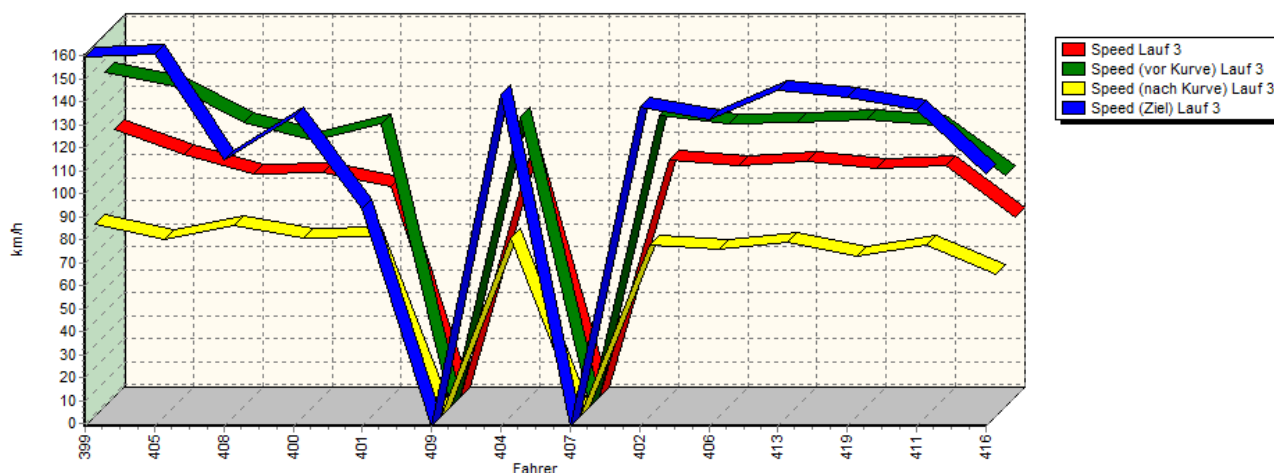


**Sektor-Diagramm (Rest) Lauf 2**

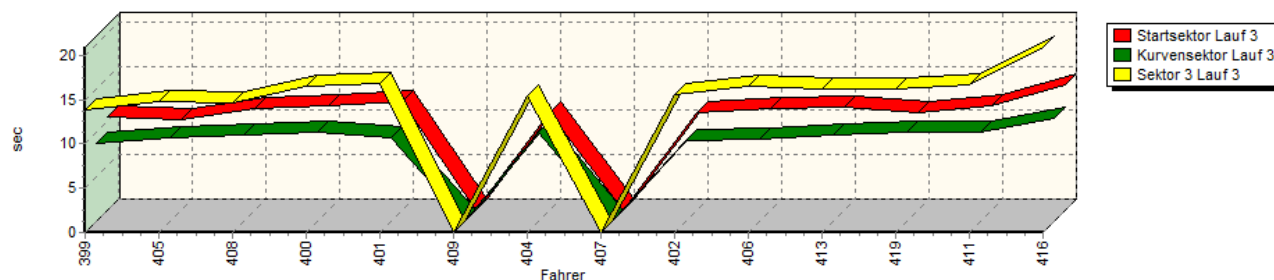


**Sektorzeiten & Speeds - Gruppe E1-FIA,E1-Berg,H,CTC/CGT bis 1400 ccm - Klasse 18**

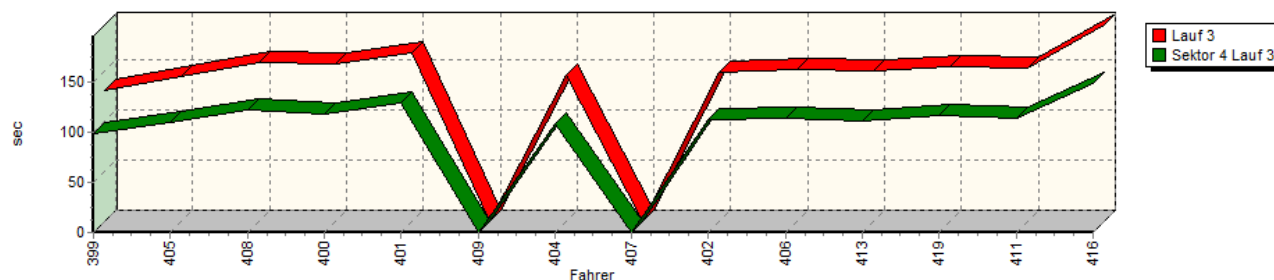
**Speed-Diagramm Lauf 3**



**Sektor-Diagramm (Start) Lauf 3**



**Sektor-Diagramm (Rest) Lauf 3**



| Rg. | Nr. | Startsek.               | Speed vor Kurve | 90°-Kurve   | Speed n. K. | Sektor 3   | Sektor 4 | Speed Ziel | Laufzeit    | Speed (Lauf) |             |
|-----|-----|-------------------------|-----------------|-------------|-------------|------------|----------|------------|-------------|--------------|-------------|
| 1   | 399 | <b>ELLER Hans Peter</b> |                 | VW Scirocco |             |            |          |            |             |              |             |
|     |     | Lauf 1:                 | 09.483          | 146,82 km/h | 07.693      | 90,05 km/h | 13.065   | 01:29.852  | 174,76 km/h | 02:00.093    | 125,90 km/h |
|     |     | Lauf 2:                 | 09.552          | 145,71 km/h | 07.813      | 90,54 km/h | 13.154   | 01:27.751  | 173,08 km/h | 01:58.270    | 127,84 km/h |
|     |     | Lauf 3:                 | 10.470          | 144,35 km/h | 08.751      | 82,62 km/h | 13.798   | 01:38.073  | 159,29 km/h | 02:11.092    | 115,34 km/h |

## Sektorzeiten &amp; Speeds - Gruppe E1-FIA,E1-Berg,H,CTC/CGT bis 1400 ccm - Klasse 18

| Rg. | Nr. | Startsek.              | Speed vor Kurve         | 90°-Kurve   | Speed n. K. | Sektor 3   | Sektor 4 | Speed Ziel | Laufzeit    | Speed (Lauf) |             |
|-----|-----|------------------------|-------------------------|-------------|-------------|------------|----------|------------|-------------|--------------|-------------|
| 2   | 405 | <b>WEIßDORN Franz</b>  | VW Polo                 |             |             |            |          |            |             |              |             |
|     |     | Lauf 1:                | 09.404                  | 144,46 km/h | 08.044      | 84,08 km/h | 13.344   | 01:33.037  | 176,47 km/h | 02:03.829    | 122,10 km/h |
|     |     | Lauf 2:                | 09.350                  | 145,19 km/h | 08.307      | 81,47 km/h | 13.485   | 01:33.028  | 174,76 km/h | 02:04.170    | 121,77 km/h |
|     |     | Lauf 3:                | 10.167                  | 138,57 km/h | 09.419      | 76,08 km/h | 14.724   | 01:50.333  | 160,71 km/h | 02:24.643    | 104,53 km/h |
| 3   | 408 | <b>MOSER Hugo</b>      | VW Polo                 |             |             |            |          |            |             |              |             |
|     |     | Lauf 1:                | 09.832                  | 137,75 km/h | 08.004      | 88,19 km/h | 14.233   | 01:33.664  | 162,16 km/h | 02:05.733    | 120,25 km/h |
|     |     | Lauf 2:                | 09.847                  | 138,03 km/h | 07.897      | 84,76 km/h | 13.927   | 01:32.583  | 162,16 km/h | 02:04.254    | 121,69 km/h |
|     |     | Lauf 3:                | 11.506                  | 122,69 km/h | 09.682      | 81,86 km/h | 14.701   | 02:02.041  | 114,65 km/h | 02:37.930    | 95,74 km/h  |
| 4   | 400 | <b>BUCHER Ronnie</b>   | Schneider VW Polo 16V   |             |             |            |          |            |             |              |             |
|     |     | Lauf 1:                | 10.211                  | 134,91 km/h | 08.662      | 83,66 km/h | 14.134   | 04:47.073  | 159,29 km/h | 05:20.080    | 47,24 km/h  |
|     |     | Lauf 2:                | 10.066                  | 136,71 km/h | 08.470      | 82,80 km/h | 14.146   | 01:36.137  | 160,71 km/h | 02:08.819    | 117,37 km/h |
|     |     | Lauf 3:                | 11.796                  | 114,72 km/h | 10.130      | 76,37 km/h | 16.480   | 01:58.753  | 133,33 km/h | 02:37.159    | 96,21 km/h  |
| 5   | 401 | <b>DUSCHER Frank</b>   | VW Polo                 |             |             |            |          |            |             |              |             |
|     |     | Lauf 1:                | 10.289                  | 129,67 km/h | 08.053      | 82,81 km/h | 14.739   | 02:01.360  | 87,38 km/h  | 02:34.441    | 97,90 km/h  |
|     |     | Lauf 2:                | 10.249                  | 129,64 km/h | 07.975      | 82,98 km/h | 14.786   | 01:36.354  | 151,26 km/h | 02:09.364    | 116,88 km/h |
|     |     | Lauf 3:                | 12.317                  | 121,83 km/h | 09.502      | 77,36 km/h | 16.905   | 02:08.931  | 93,26 km/h  | 02:47.655    | 90,18 km/h  |
| 6   | 409 | <b>BERNERT Klaus</b>   | VW Polo 16V             |             |             |            |          |            |             |              |             |
|     |     | Lauf 1:                | 10.193                  | 133,81 km/h | 10.556      | 69,92 km/h | 15.199   | 01:39.859  | 159,29 km/h | 02:15.807    | 111,33 km/h |
|     |     | Lauf 2:                | 10.160                  | 133,57 km/h | 09.037      | 80,91 km/h | 14.405   | 01:36.966  | 157,89 km/h | 02:10.568    | 115,80 km/h |
|     |     | Lauf 3:                | 00.000                  | * km/h      | 00.000      | * km/h     | 00.000   | *          | * km/h      | *            | * km/h      |
| 7   | 404 | <b>ABB Nils</b>        | Schneider VW Polo II 8V |             |             |            |          |            |             |              |             |
|     |     | Lauf 1:                | 10.448                  | 127,35 km/h | 08.861      | 82,09 km/h | 14.940   | 01:37.392  | 151,26 km/h | 02:11.641    | 114,86 km/h |
|     |     | Lauf 2:                | 19.866                  | 22,99 km/h  | 00.000      | * km/h     | 00.000   | *          | * km/h      | A            | * km/h      |
|     |     | Lauf 3:                | 11.085                  | 125,17 km/h | 10.026      | 76,34 km/h | 15.452   | 01:48.880  | 142,86 km/h | 02:25.443    | 103,96 km/h |
| 8   | 407 | <b>KOHLER Thomas</b>   | Fiat X1/9 16V           |             |             |            |          |            |             |              |             |
|     |     | Lauf 1:                | 10.207                  | 126,08 km/h | 09.158      | 79,90 km/h | 15.023   | 01:40.051  | 157,89 km/h | 02:14.439    | 112,47 km/h |
|     |     | Lauf 2:                | 10.263                  | 126,51 km/h | 08.463      | 82,29 km/h | 14.999   | 01:38.516  | 155,17 km/h | 02:12.241    | 114,34 km/h |
|     |     | Lauf 3:                | 00.000                  | * km/h      | 00.000      | * km/h     | 00.000   | *          | * km/h      | *            | * km/h      |
| 9   | 402 | <b>LOHMANN Frank</b>   | VW Polo II              |             |             |            |          |            |             |              |             |
|     |     | Lauf 1:                | 10.693                  | 127,19 km/h | 08.349      | 77,78 km/h | 15.008   | 01:43.019  | 153,85 km/h | 02:17.069    | 110,31 km/h |
|     |     | Lauf 2:                | 10.405                  | 128,33 km/h | 08.487      | 73,05 km/h | 15.275   | 01:38.375  | 155,17 km/h | 02:12.542    | 114,08 km/h |
|     |     | Lauf 3:                | 11.001                  | 125,80 km/h | 09.197      | 73,55 km/h | 15.537   | 01:52.542  | 137,40 km/h | 02:28.277    | 101,97 km/h |
| 10  | 406 | <b>HÜLSMANN Markus</b> | VW Golf I               |             |             |            |          |            |             |              |             |
|     |     | Lauf 1:                | 10.558                  | 124,66 km/h | 08.592      | 73,46 km/h | 15.570   | 01:41.935  | 148,76 km/h | 02:16.655    | 110,64 km/h |
|     |     | Lauf 2:                | 10.479                  | 124,68 km/h | 08.638      | 72,64 km/h | 15.609   | 01:40.821  | 145,16 km/h | 02:15.547    | 111,55 km/h |
|     |     | Lauf 3:                | 11.515                  | 122,19 km/h | 09.322      | 71,40 km/h | 16.518   | 01:54.440  | 132,35 km/h | 02:31.795    | 99,61 km/h  |
| 11  | 413 | <b>DIETZ Nikolas</b>   | VW Polo II 8V           |             |             |            |          |            |             |              |             |
|     |     | Lauf 1:                | 10.694                  | 125,06 km/h | 08.764      | 81,94 km/h | 15.228   | 01:55.894  | 146,34 km/h | 02:30.580    | 100,41 km/h |
|     |     | Lauf 2:                | 10.753                  | 125,55 km/h | 08.810      | 79,84 km/h | 15.321   | 01:40.764  | 152,54 km/h | 02:15.648    | 111,47 km/h |
|     |     | Lauf 3:                | 11.701                  | 122,82 km/h | 09.738      | 74,93 km/h | 16.268   | 01:51.707  | 145,16 km/h | 02:29.414    | 101,20 km/h |
| 12  | 419 | <b>EBENHÖH Silvia</b>  | VW Polo I               |             |             |            |          |            |             |              |             |
|     |     | Lauf 1:                | 10.154                  | 130,68 km/h | 09.359      | 74,74 km/h | 14.883   | 01:44.745  | 157,89 km/h | 02:19.141    | 108,67 km/h |
|     |     | Lauf 2:                | 10.063                  | 132,97 km/h | 08.778      | 77,40 km/h | 14.682   | 01:43.754  | 155,17 km/h | 02:17.277    | 110,14 km/h |
|     |     | Lauf 3:                | 10.943                  | 123,50 km/h | 10.053      | 68,95 km/h | 16.257   | 01:56.270  | 141,73 km/h | 02:33.523    | 98,49 km/h  |
| 13  | 411 | <b>WINKLER Stefan</b>  | Fiat 127                |             |             |            |          |            |             |              |             |
|     |     | Lauf 1:                | 10.818                  | 121,06 km/h | 08.997      | 76,98 km/h | 15.786   | 01:42.574  | 145,16 km/h | 02:18.175    | 109,43 km/h |
|     |     | Lauf 2:                | 10.724                  | 122,67 km/h | 09.022      | 78,46 km/h | 15.626   | 01:42.465  | 144,00 km/h | 02:17.837    | 109,70 km/h |
|     |     | Lauf 3:                | 11.790                  | 121,08 km/h | 10.091      | 73,75 km/h | 16.707   | 01:53.586  | 136,36 km/h | 02:32.174    | 99,36 km/h  |

**Sektorzeiten & Speeds - Gruppe E1-FIA,E1-Berg,H,CTC/CGT bis 1400 ccm - Klasse 18**

| Rg. | Nr.     | Startsek.             | Speed vor Kurve | 90°-Kurve        | Speed n. K. | Sektor 3 | Sektor 4  | Speed Ziel  | Laufzeit  | Speed (Lauf) |
|-----|---------|-----------------------|-----------------|------------------|-------------|----------|-----------|-------------|-----------|--------------|
| 14  | 416     | <b>AUEROCHS Marco</b> |                 | Citroën AX-Sport |             |          |           |             |           |              |
|     | Lauf 1: | 12.919                | 102,09 km/h     | 10.429           | 65,03 km/h  | 19.506   | 02:15.040 | 116,13 km/h | 02:57.894 | 84,99 km/h   |
|     | Lauf 2: | 12.568                | 106,93 km/h     | 10.124           | 66,73 km/h  | 18.711   | 02:10.431 | 120,00 km/h | 02:51.834 | 87,99 km/h   |
|     | Lauf 3: | 14.103                | 99,29 km/h      | 11.629           | 60,69 km/h  | 20.922   | 02:29.234 | 108,43 km/h | 03:15.888 | 77,19 km/h   |